



Agenda
May 22, 2025
6:00 p.m.— Pulaski County Innovation Center, Fairlawn, VA

- I. **CALL TO ORDER**
- II. **CONSENT AGENDA**
 - A. Approval of Minutes for April
 - B. [Approval of Treasurer's Report for April](#)
- III. **COMMONWEALTH INTERGOVERNMENTAL REVIEW PROCESS**
 - A. Projects Signed-off by the staff
None
 - B. Regular Project Review
 - 1. [Vivarium Research Building at Virginia Tech Corporate Research Center](#)
- IV. **PUBLIC ADDRESS**
- V. **CHAIR'S REPORT**
- VI. [EXECUTIVE DIRECTOR'S REPORT](#)
- VII. **REVIEW OF MUTUAL CONCERNS AND COMMISSIONERS' REPORTS**
- VIII. **OLD BUSINESS**
- IX. **NEW BUSINESS**
 - A. [Community Foundation of the New River Valley Overview](#)
Jessica Wirgau, Ph.D., Chief Executive Officer
Commission Discussion
 - B. [New River Valley Regional Economic Strategy Update](#)
Leo Priddy, Economic Development Planning Specialist
Commission Discussion
 - C. [Federal Program Impacts: Legislative Outreach/Communication](#)
Kevin Byrd, Executive Director
Commission Action
 - D. [Regional Commission Awards – Review Criteria and Process](#)
Commission Action
 - E. [FY26 Nominating Committee Slate of Officers Presented](#)
Nominating Committee
Action scheduled for June meeting
 - F. Next Meeting: June 26th

All meeting materials posted on the Commission website www.nrvrc.org

The New River Valley Regional Commission provides area wide planning for the physical, social, and economic elements of the district; encourages and assists local governments in planning for their future; provides a means of coordinating federal, state, and local efforts to resolve area problems; provides a forum for review of mutual concerns; and implements services upon request of member local governments.



6580 Valley Center Drive | Suite 124 | Radford, VA 24141 | 540-639-9313

N R V R C . O R G

MEMORANDUM

To: NRVRC Board Members

From: Jessica Barrett, Finance Director

Date: May 14, 2025

Re: April 2025 Financial Statements

The April 2025 Agencywide Revenue and Expenditure Report and Balance Sheet are enclosed for your review. Financial reports are reviewed by the Executive Committee prior to inclusion in the meeting packet.

The Agencywide Revenue and Expense report compares actual year to date receipts and expenses to the FY24-25 budget adopted by the Commission at the June 27, 2024 meeting. The financial operations of the agency are somewhat fluid and projects, added and modified throughout the year, along with the high volume of Workforce program activities, impact the adopted budget. To provide clarity, Commission and Workforce Development Board activities are separated on the agencywide report.

As of month-end April 2025 (83% of the fiscal year), Commission year to date revenues are 55% and expenses are 52% of adopted budget. The two largest budget expense lines, Salary and Fringe, are in line with budget at 77% and 85%, respectively.

Looking at the balance sheet, Accounts Receivable is \$967,465. Of this total, Workforce receivables are \$430,963 (45%) and current. The Executive Committee reviews all aged receivables over 60 days and no receivables are deemed uncollectible. Net Projects (\$391,646) represent in process projects that have not been invoiced and posted to receivables.

Counties

Floyd | Giles
Montgomery | Pulaski

City

Radford

Towns

Blacksburg | Christiansburg | Dublin
Floyd | Narrows | Pearisburg
Pembroke | Pulaski | Rich Creek

Higher Education

Virginia Tech | Radford University
New River Community College

New River Valley Regional Commission
Balance Sheet
4/30/2025

<u>Assets:</u>		Prior Month	Current Month
	Operating Account	703,514	23,411
	First Bank & Trust - Bland/Montgomery Broadband	468,381	2,380,083
	First Bank & Trust - Pulaski County Broadband	1,652,428	1,656,978
	First Bank & Trust - Office Building Financing	1,290,871	1,259,998
	First Bank & Trust - Regional Housing Fund	472,640	467,730
	First Bank & Trust - Money Market	310,360	311,314
	US Bank - Bond Proceeds	13,669	13,848
	Accounts Receivable	999,251	967,465
	Utility Deposits	3,307	3,307
	Loans Receivable - Revolving Loan Fund	32,314	31,742
	Restricted Cash - Revolving Loan Fund	76,187	76,869
	Commission Vehicles	32,365	32,365
	Office Building	2,013,762	2,013,762
	Total Assets:	8,069,050	9,238,869
<u>Liabilities:</u>			
	Accounts Payable	1,044,957	324,715
	Accrued Annual Leave	120,159	120,159
	Accrued Unemployment	37,499	37,593
	Expense Reimbursement	3,093	584
	Funds on Hand - Montgomery County Broadband	466,085	2,375,959
	Funds on Hand - Pulaski County Broadband	1,647,986	1,647,986
	Funds on Hand - Regional Housing Fund	472,640	467,730
	Unearned Revenue	0	39,310
	Loan Payable	1,945,000	1,945,000
	Bond Premium	169,220	169,220
	Total Liabilities:	5,906,639	7,128,256
<u>Projects:</u>			
(Equity Accounts)	Net Projects	(336,153)	(391,646)
	Current Year Unrestricted	132,292	128,868
	Office Building Project	1,324,607	1,328,540
	Unrestricted Net Assets	913,441	913,441
	Restricted Net Assets - Revolving Loan Fund	107,467	107,467
	Total Projects (Equity)	2,141,654	2,086,669
	Total Liabilities and Projects	8,048,292	9,214,925
	Net Difference to be Reconciled	20,758	23,944
	Total Adjustments to Post*	20,758	23,944
	Unreconciled Balance (after adjustment)	0	0

*YTD adjustment to Accrued Leave. Final adjustment posted to general ledger at fiscal year end closeout.

**New River Valley Regional Commission
Revenue and Expenditures - April 2025**

FY24-25 Budget		(83% of FY)			
		April 2025	YTD	Under/Over	% Budget
NRVRC Anticipated Revenues					
	Budget				
ARC Annual Admin Grant	89,160	0	44,580	44,580	50.00%
ARC PemTel Painters School Road Broadband	0	0	4,316	(4,316)	0.00%
ARC POWER Water Trail Implementation	35,000	0	0	35,000	0.00%
ARC LDD READY Appalachia	35,319	4,341	32,116	3,203	90.93%
ARC Passenger Rail Station Development	20,000	0	753	19,247	0.00%
ARC Broadband Bland	449,764	0	0	449,764	0.00%
ARC Helene Recovery	0	0	5,947	(5,947)	0.00%
Local Assessment	241,429	0	241,429	0	100.00%
Office Project Member Contributions	0	0	1,307,527	(1,307,527)	0.00%
DHCD - Administrative Grant	114,971	0	86,228	28,743	75.00%
DHCD VATI 2022	31,462,712	530,692	14,662,765	16,799,947	46.60%
DHCD VATI 2022 VMRI	0	0	248,462	(248,462)	0.00%
DHCD Regional Digital Opportunity	75,000	9,895	34,124	40,876	0.00%
DRPT RIDE Solutions NRV	93,884	0	52,865	41,019	56.31%
EDA	70,000	0	52,500	17,500	75.00%
EDA Tech Hub	168,000	0	160,174	7,826	95.34%
Go Virginia Scale Up	6,550	24,981	87,562	(81,012)	1336.82%
Workforce Fiscal Agent	75,000	18,750	75,000	0	100.00%
Workforce Power Fiscal Agent	15,000	0	15,000	0	100.00%
Workforce YouthBuild Fiscal Agent	12,500	0	12,500	0	100.00%
Workforce Ready SWVA Fiscal agent	5,500	0	10,500	(5,000)	190.91%
Workforce WORC Fiscal agent	25,000	0	25,000	0	100.00%
Workforce WIOA Soft Skills Fiscal Agent	1,500	0	1,500	0	100.00%
Workforce WIOA Supplemental Fiscal Agent	1,500	0	1,500	0	100.00%
Workforce WIOA Technical Skills Fiscal Agent	2,000	0	2,000	0	100.00%
Workforce Trades Gap Fiscal Agent	25,000	0	25,000	0	100.00%
Workforce YouthBuild Build Your Career Fiscal Age	20,000	0	25,000	(5,000)	125.00%
VDOT	58,000	0	36,185	21,815	62.39%
Floyd County	79,000	197	50,320	28,680	63.70%
Floyd Town	15,000	4,092	15,312	(312)	102.08%
Giles County	27,000	0	7,923	19,077	29.34%
Giles County Broadband	30,000	0	0	30,000	0.00%
Narrows Town	37,500	4,788	22,235	15,265	59.29%
Pearisburg Town	10,000	0	30,385	(20,385)	303.85%
Montgomery County VATI 2021	2,000	0	508	1,492	25.39%
Montgomery County VATI 2022	2,660,859	90,125	1,508,546	1,152,313	56.69%
Montgomery County Opiod Abatement	720,000	62,670	510,018	209,982	70.84%
Blacksburg Town	18,000	1,500	15,000	3,000	83.33%
Christiansburg Town	42,157	557	21,439	20,718	50.86%
Pulaski County	10,000	1,039	11,721	(1,721)	117.21%
Pulaski County VATI	966,429	0	352,014	614,415	36.42%
Pulaski Town	30,000	0	0	30,000	0.00%
Radford City	21,299	1,927	18,472	2,827	86.73%
MM Interest	4,500	954	5,053	(553)	112.29%
Interest Income - VATI	150,000	10,498	133,015	16,985	88.68%
Miscellaneous Income	0	1,862	7,910	(7,910)	0.00%
Virginia's First	16,080	1,250	12,500	3,580	77.74%
NRV MPO	108,216	0	40,594	67,622	37.51%
Pembroke	5,016	0	1,508	3,508	30.06%
Dept of Environmental Quality	65,750	0	11,629	54,121	17.69%
VHDA	54,375	0	778,140	(723,765)	1431.06%
Southwest Virginia SWMA	11,500	0	11,400	100	99.13%
Virginia Recycling Association	15,000	0	11,250	3,750	75.00%
VDH New River Health District	125,000	0	99,524	25,476	79.62%
Pemtel	0	0	10,500	(10,500)	0.00%
RVARC	0	0	2,806	(2,806)	0.00%
Regional Housing Trust Fund	50,000	4,374	32,824	17,176	0.00%
NRV Passenger Rail Authority	76,500	2,466	78,449	(1,949)	102.55%
New River Conservancy	45,000	2,462	11,388	33,612	25.31%
Revolving Loan - Interest	1,400	109	1,164	236	83.11%
Direct Charge Reimbursement	0	0	1,316	(1,316)	0.00%
Sub Total Revenues	38,500,370	779,529	21,065,393	17,434,978	54.71%
Expenses					
Salaries	1,757,236	137,360	1,349,062	408,174	76.77%
Fringe Benefits	495,526	42,748	421,229	74,297	85.01%
Travel	46,239	2,155	27,992	18,247	60.54%
Office Space	69,000	5,727	57,274	11,726	83.01%
Utilities	0	1,271	5,566	(5,566)	0.00%
Communications	21,000	1,601	18,666	2,334	88.89%
Office Supplies	126,278	1,179	53,129	73,149	42.07%
Postage	1,300	83	1,291	9	99.28%
Printing	8,000	0	7,920	80	99.00%
Copier Usage/Maintenance	1,400	173	1,266	134	90.42%
Outreach/Media Adv	18,001	500	18,527	(526)	102.92%
Equipment Rent/Copier	3,000	223	2,234	766	74.46%
Fleet Vehicles	1,600	29	1,199	401	74.93%
Dues/Publications	19,955	50	16,494	3,461	82.66%
Training/Staff Development	49,500	456	32,582	16,918	65.82%
Insurance	5,000	0	5,095	(95)	101.90%
Meeting Costs	24,150	3,118	18,829	5,321	77.97%
Capital Outlay	50,000	0	0	50,000	0.00%
Contractual Services	35,740,330	634,680	17,693,592	18,046,738	49.51%
Professional Services Audit/Legal	56,150	1,073	99,652	(43,502)	177.47%
Miscellaneous/Fees	6,705	230	3,317	3,388	49.47%
Reimbursed Expenses	0	1,859	277	(277)	0.00%
Interest Expense	0	0	42,607	(42,607)	0.00%
Bond Issuance Costs	0	0	121,831	(121,831)	0.00%
Sub Total Expenses	38,500,370	834,513	19,999,632	18,665,176	51.95%
NRVRC Balance	0	(54,984)	1,065,761		

New River/Mount Rogers Workforce Development Board
Revenue and Expenditures - April 2025

NR/MR WDB Anticipated Revenues		(83% of FY)			
		April 2025	YTD	Under/Over	% Budget
Workforce Development Area	4,294,437	170,186	2,015,200	2,279,237	46.93%
Sub Total Revenues		170,186	2,015,200	2,279,237	
Expenses					
Salaries	766,620	77,320	769,619	(2,999)	100.39%
Fringe Benefits	275,983	25,558	253,077	22,906	91.70%
Travel	45,000	0	33,191	11,809	73.76%
Office Space	26,000	7,508	49,098	(23,098)	188.84%
Utilities	0	0	0	0	0.00%
Communications	16,000	2,578	24,101	(8,101)	150.63%
Office Supplies	34,000	3,432	22,787	11,213	67.02%
Postage	250	0	6	244	2.45%
Printing	2,000	0	0	2,000	0.00%
Copier Usage/Maintenance	5,500	134	299	5,201	5.44%
Outreach/Media Adv	88,000	4,375	18,624	69,376	21.16%
Equipment Rent/Copier	1,700	172	1,630	70	95.87%
Dues/Publications	8,000	140	1,715	6,285	21.44%
Training/Staff Development	12,000	0	23,145	(11,145)	192.87%
Insurance	5,000	0	4,314	686	86.28%
Meeting Costs	61,000	2,043	11,586	49,414	18.99%
Contractual Services	2,898,794	42,260	788,113	2,110,681	27.19%
Professional Services Audit/Legal	12,200	0	8,638	3,562	70.80%
Miscellaneous/Fees	36,390	0	0	36,390	0.00%
Workforce Grants Admin	0	4,667	5,258	(5,258)	0.00%
Sub Total Expenses	4,294,437	170,186	2,015,200	2,279,237	46.93%
NR/MR WDB Balance	0	0	0		

Total Agency R&E		April 2025	YTD	
Anticipated Revenue	42,794,807	949,715	23,080,593	53.93%
Anticipated Expense	42,794,807	1,004,699	22,014,832	51.44%
Balance		(54,984)	1,065,761	



6580 Valley Center Drive | Suite 124 | Radford, VA 24141 | 540-639-9313

N R V R C . O R G

COMMONWEALTH INTERGOVERNMENTAL REVIEW MEMORANDUM

TO: Regional Commission Board Members

FROM: Kevin R. Byrd, Executive Director

AGENDA ITEM: III. Intergovernmental Review Process, B. Regular Projects, Item #1

CIRP Review

May 16, 2025

PROJECT: Vivarium Research Building at Virginia Tech Corporate Research Center

SUBMITTED BY: Virginia Tech

PROJECT DESCRIPTION: The Department of Environmental Quality is requesting comments on an Environmental Impact Review.

PROJECT SENT FOR REVIEW TO: Commission Board Members

Strengthening the Region through Collaboration

Counties

Floyd | Giles
Montgomery | Pulaski
City
Radford

Towns

Blacksburg | Christiansburg
Floyd | Narrows | Pearisburg
Pembroke | Pulaski
Rich Creek

Higher Education

Virginia Tech
Radford University
New River Community College

I. PROJECT IDENTIFICATION AND DESCRIPTION

A. Background

The proposed project seeks to construct an approximately 68,000 square foot vivarium research building at the Virginia Tech Corporate Research Center (VTCRC) in Blacksburg, Virginia. The building is intended to support Virginia Tech students and researchers by providing access to a state-of-the-art research facility close to the campus of Virginia Tech, to supplement existing, on-campus animal facilities (vivaria). The new Vivarium will be located at the VTCRC which is a research park located adjacent to the campus of Virginia Tech in Blacksburg, Virginia. The total area of land disturbance is anticipated to be approximately 13.8 acres. Founded in 1985, the VTCRC's mission is *"to create space with purpose where innovators have access to unparalleled resources, partnerships and opportunities for growth in a world where big thinkers turn ideas into impact"*. Since its inception, VTCRC has been home to over 750 premier organizations. VTCRC tenants have access to an elite pool of talented students, faculty, staff, and university resources.

B. Project Description and Capital Budget

The new research building and associated asphalt paved parking areas will be located on a currently undeveloped tract of land comprising approximately 13.8 acres on the campus of VTCRC. It will be situated along Smoot Drive adjacent to existing research and support buildings including 1600, 1680, 1670, 1691, 1311, 1331 and 1341 and 1351, all on the campus. It is anticipated that the building will be approximately 68,000 square feet (sf), with 24,000 sf of core space and 44,000 sf of assignable space. The assignable space will be further divided into 22,000 sf of vivarium and support space including cage wash, feed and other equipment and supply storage, surgical suite, necropsy suite, and housing for rats, mice, other small rodents, as well as up to 25% of other species including birds, reptiles, and small wild caught mammals. The remaining 22,000 sf will be divided between wet laboratories and office space.

This facility will be subject to AAALAC International standards, Public Health Service (PHS) Policy, and National Institutes of Health's Office of Laboratory Animal Welfare (OLAW) standards and applicable United States Department of Agriculture (USDA) requirements outlined in the Animal Welfare Act and regulations. This building will be fully occupied by Virginia Tech. Construction is proposed to start in the spring of 2026.

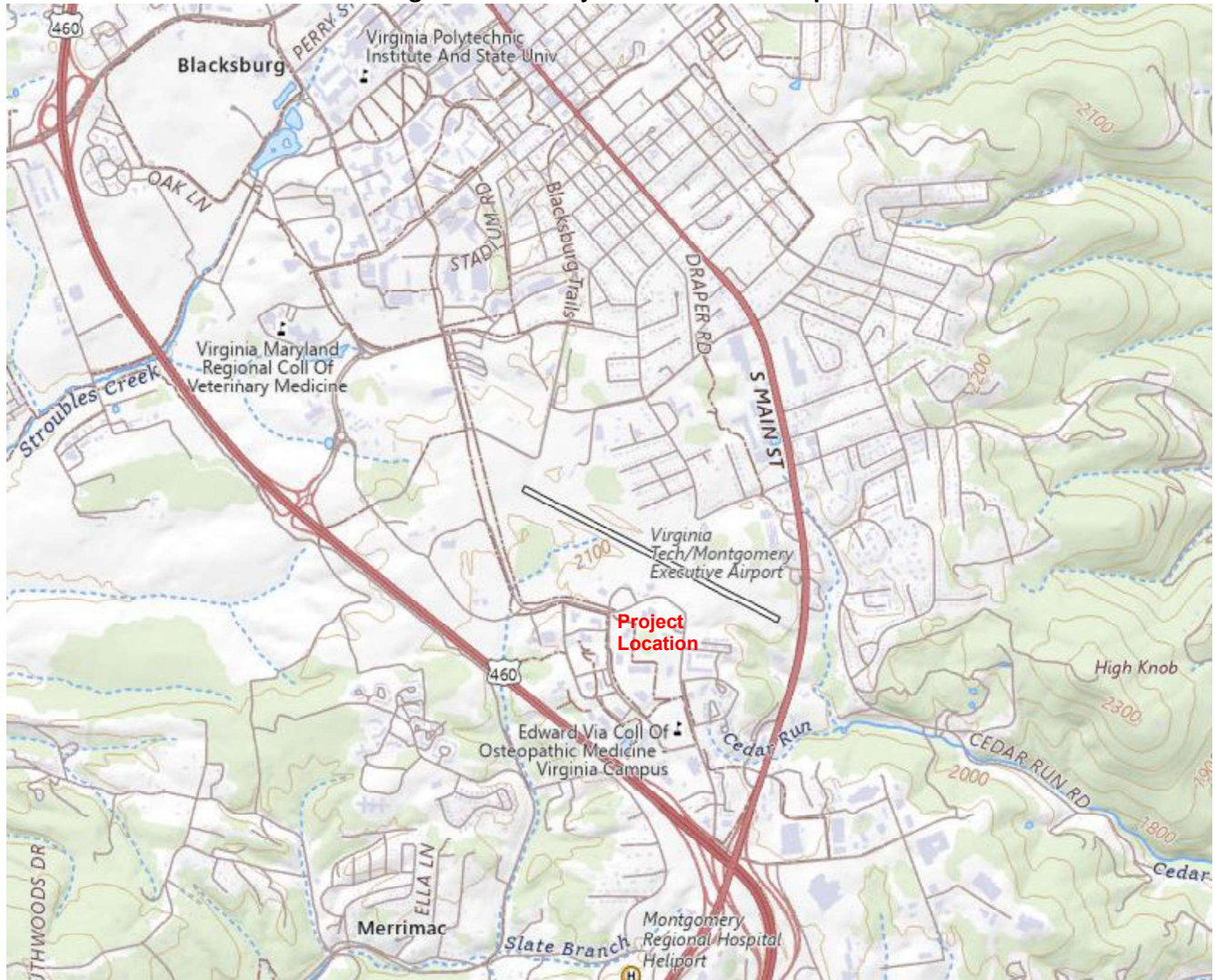
The anticipated project construction cost exceeds \$500,000, thus requiring an Environmental Impact Review (EIR). The proposed project is sponsored by Virginia Tech Foundation and the project contact is provided below:

Terri Harris, Director of Accounting and Financial Reporting
Virginia Tech Corporate Research Center
1715 Pratt Drive #1000
Blacksburg, Virginia 24060
Office: (540) 961-3600 xt. 2102 / E-mail: accounting@vtcrc.com

The project budget for the Vivarium is \$45,000,000.

The VTCRC is located next to the Virginia Tech main campus and comprises approximately 230 acres of land with 36 completed buildings and over 170 tenants that include technology, research and support companies. The VTCRC is located adjacent to the Virginia Tech Airport. A Project Site Location Map showing the general location of the proposed new Vivarium is provided below.

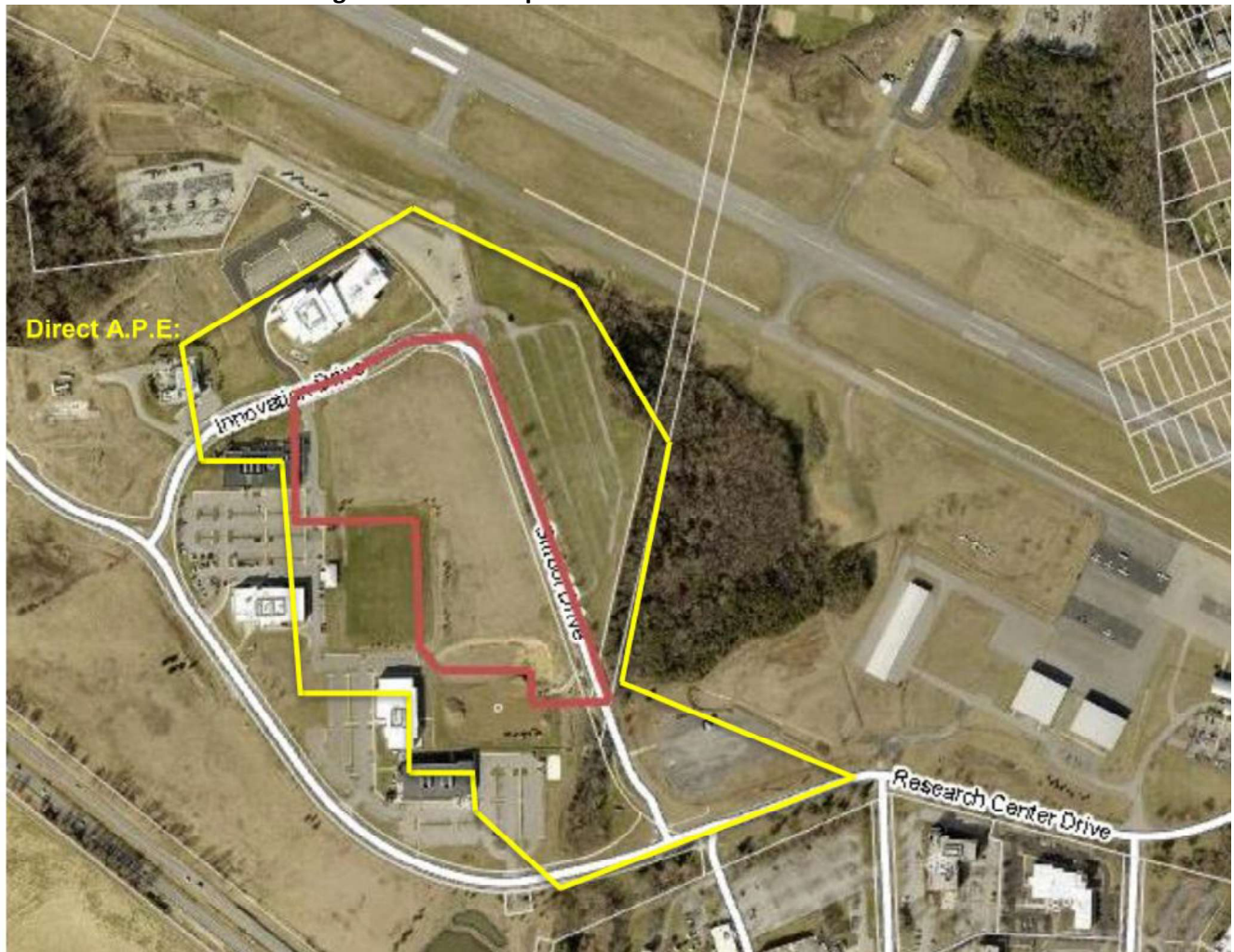
Figure No. 1 - Project Site Location Map



Source: USGS EarthExplorer <https://earthexplorer.usgs.gov/>

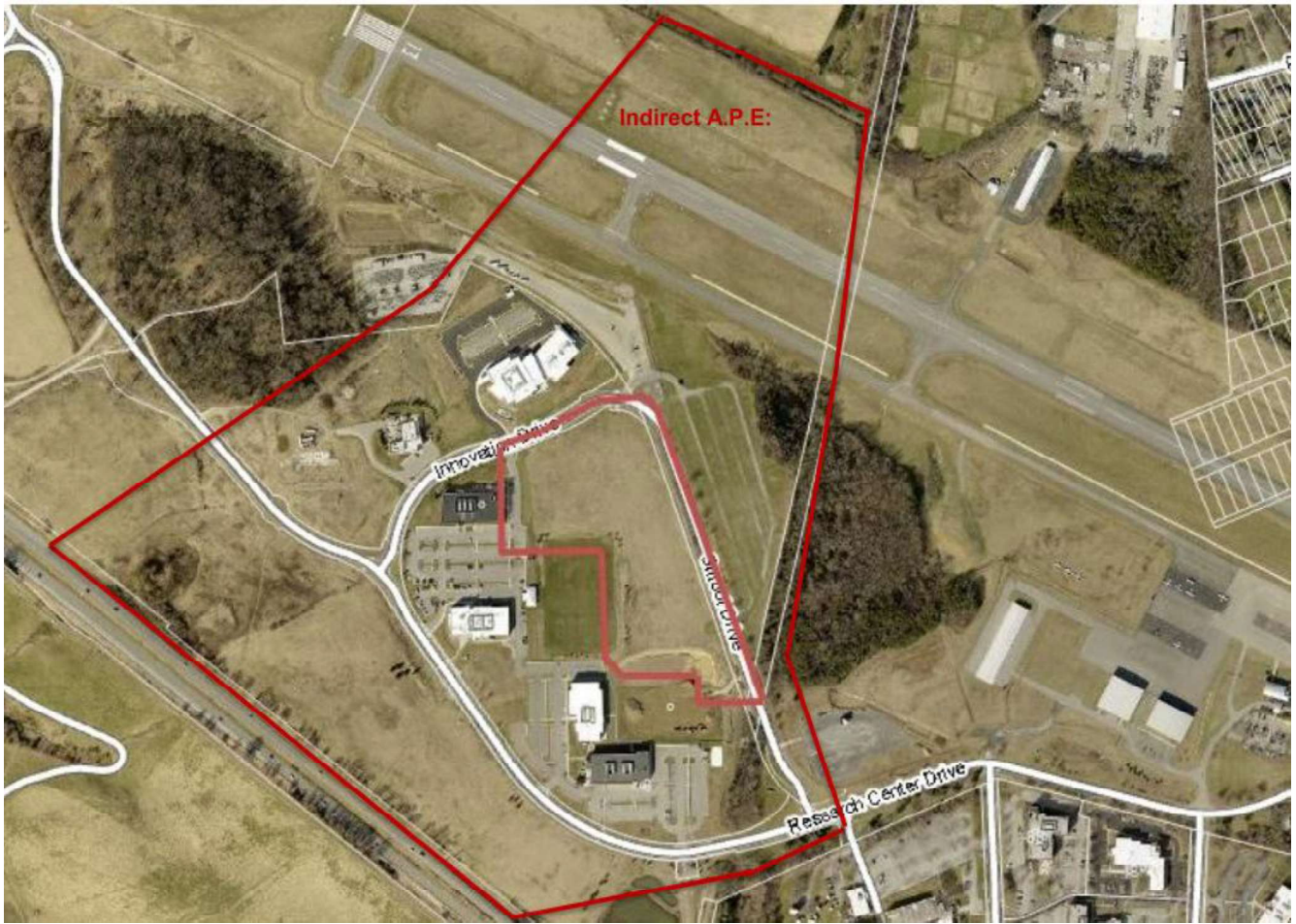
The direct area of potential effect (APE) where the building will be located and the area of indirect potential effect where the proposed new building could be visible based on local topography, vegetation and view shed are shown below in Figure 2A and 2B below.

Figure No. 2A - Map of Direct Area of Potential Effect



Source: Montgomery County, VA GIS <https://montva.com/1/departments-services/GIS>

Figure No. 2B - Map of Indirect Area of Potential Effect



Source: Montgomery County, VA GIS <https://montva.com/1/departments-services/GIS>



6580 Valley Center Drive | Suite 124 | Radford, VA 24141 | 540-639-9313

N R V R C . O R G

May 15, 2025

Executive Director's Report

Economic Development:

- The NRV Recovery Ecosystem submitted the FY26 proposal to the Opioid Abatement Authority (OAA) at the beginning of April. Grant decisions are anticipated within the next month. An extended internal project team meeting was held this week to discuss communication of the OAA program and the services delivered through the NRV Recovery Ecosystem.
- The Virginia AM2 Tech Hub will host their next all-hands meeting on June 3 at 1:00pm at IperionX in South Boston. The GO Virginia application for the GO TEC program was approved by the Regional Council and headed to the state office for administrative review. Planning is well underway for a fall AM2 Tech Hub conference. Information will be distributed once registration is available.
- The Regional Commission will receive a brief update on the Regional Economic Strategy this month ahead of the board's schedule adoption at the June meeting. The focus for May will be the updated Strengths, Weaknesses, Opportunities, and Threats (SWOT) analysis conducted in 2025.

Broadband:

- The NRVRC is kicking-off the Digital Opportunities Planning process to assist all four counties and the city in identifying strategies for residents and businesses to maximize the use of increased internet capacity. A regional meeting will be held on May 30th 9:00-12:30 at New River Community College in Edwards Hall. Once the plan is in place communities will be able to apply for implementation funds through the BEAD program.
- The Montgomery/Bland County VATI project is making good construction progress. All Points Broadband in Pulaski County is at an impasse on make-ready with Appalachian Power. This resulted in All Points Broadband filing with the FCC to seek arbitration between the internet service provider and the utility company. Directive from the FCC is anticipated within 60-days.

Transportation:

- The NRV Passenger Rail Station Authority will meet on May 22nd to discuss the building layout with the architecture/engineering team. Norfolk Southern has an aggressive construction schedule underway on the site working seven days a week.
- VDOT held their annual Six-Year Improvement Plan (SYIP) public input meeting on May 14th in Salem.

Housing:

- The Virginia Housing Planning District Commission competitive housing grant was submitted last month and received feedback recently that it was not selected for funding. There were 17 applicants out of 21 PDCs and seven will be awarded funding. A debrief meeting with Virginia Housing is being scheduled the first week of June.

Natural Resources:

- The Regional Commission submitted a grant application to the VA Dept of Environmental Quality to support a limited portion of the Water Supply Plan update. The proposed scope aligned with the funds available (\$8,800). Not all regions applied for funds, so the grant award was increased to approximately \$11,000.
- The New River Watershed Roundtable is scheduled to hold the next meeting on July 23rd at 10:30am. If anyone would like to be added to the meeting distribution list please contact me.

Regional:

- The Regional Commission continues to support communities impacted by Hurricane Helene. Funds currently available include Community Development Block Grants (CDBG) for Urgent Needs; GO Virginia recently opened a special Hurricane Helene Business Recovery program; CDBG for Disaster Recovery will be available for applications soon; 2025 General Assembly appropriation for Hurricane Helene/Winter Storm 2025 will be available for applications soon as well. A NRV meeting on the General Assembly funding may be held next week. Once it is confirmed a meeting notice will be distributed to all local governments.

Commission:

- An advertisement for the vacant Natural Resources position will be available soon with an anticipated FY26 start date after July 1st.
- The FY26 budget is nearing completion and will be presented to the board at the June 26th meeting.
- Thank you for all the Commissioners who provided feedback for the annual Executive Director review process. The Executive Committee reviewed the feedback this week and shared input heading into FY26.



6580 Valley Center Drive | Suite 124 | Radford, VA 24141 | 540-639-9313

N R V R C . O R G

MEMORANDUM

To: NRVRC Board Members

From: Kevin R. Byrd, Executive Director

Date: May 15, 2025

Re: Community Foundation of the New River Valley Overview

The Community Foundation of the New River Valley is an important partner of the Regional Commission. The close working relationship spans close to 15 years and started during the New River Valley Livability Initiative regional planning process. The Livability Initiative was a three-year planning program funded by the US Department of Housing and Urban Development (HUD), Environmental Protection Agency (EPA), and Department of Transportation (DOT) with the understanding that regional investments in any one of the three pillars of housing, transportation, or environment have an impact on the other. The Community Foundation was a key partner in conceptualizing the Livability Initiative and transition post-planning into implementation. This planning program was catalytic for the Regional Commission and the New River Valley. The partnerships that were formed and data-driven decision making to inform strategies has led to numerous successful projects in the region. Investments such as the Prices Fork School Reuse, annual Livability Exchange, Aging in Place Workbook, and several programs stewarded by the Community Foundation such as early childhood education and food security.

Jessica Wirgau, Ph.D., Chief Executive Officer, of the Community Foundation will present at the meeting on May 22nd to provide an overview of the organization, programs delivered, and community impact. To learn more about the Community Foundation please visit their website www.cfnrv.org

Strengthening the Region through Collaboration

Counties

Floyd | Giles
Montgomery | Pulaski
City
Radford

Towns

Blacksburg | Christiansburg
Floyd | Narrows | Pearisburg
Pembroke | Pulaski
Rich Creek

Higher Education

Virginia Tech
Radford University
New River Community College



6580 Valley Center Drive | Suite 124 | Radford, VA 24141 | 540-639-9313

N R V R C . O R G

MEMORANDUM

To: Regional Commission Board Members
From: Leo Priddy, Economic Development Planning Specialist
Date: May 22, 2025
Re: Regional Economic Strategy Update

Each year, the Regional Commission is responsible for preparing and maintaining the Regional Economic Strategy (RES), also known as the Comprehensive Economic Development Strategy (CEDS). This planning document informs economic development activities in the region by analyzing economic trends, setting goals and objectives, and identifying priority projects submitted by local governments.

Over the course of this year's update, four RES Committee meetings have been held or scheduled on November 22, February 28, April 4, and May 28. These meetings have focused on reviewing the Local Projects List, updating priority strategies and SWOT analysis, and identifying relevant content updates based on recent regional and federal guidance.

In addition, the RES Committee is making revisions to reflect the updated U.S. Economic Development Administration (EDA) Content Guidelines, to support continued alignment with federal expectations and funding opportunities.

Attached is the updated SWOT analysis, reflecting committee input and the evolving needs of our region. A Local Projects List, with over 120 projects identified, will be shared during the meeting.

Next Steps & Approval of the RES

A request for approval of the final report will be brought before the board in June.

Should you have any questions or wish to review information related to the RES, please contact me at lpriiddy@nrvrc.org.

Counties
Floyd | Giles
Montgomery | Pulaski

City
Radford

Towns
Blacksburg | Christiansburg | Dublin
Floyd | Narrows | Pearisburg
Pembroke | Pulaski | Rich Creek

Higher Education
Virginia Tech | Radford University
New River Community College

Strengths

- **Strong culture of community collaboration**, regional pride, and stakeholder engagement, with robust cross-sector partnerships and placemaking efforts.
- **Diverse industries and highly skilled trade workforce**, emphasizing the importance of nurturing trades.
- **Variety of community types** (rural, suburban, urban) offering unique living options and intentional lifestyles.
- **Commitment to workforce development through partnerships** across healthcare, local governments, private businesses, and industries.
- **Progress in trade and small business education** supporting local entrepreneurship.
- **Collaborative housing initiatives** addressing regional needs (e.g., Home Consortium, Housing Trust Fund).
- **Resilient IT sector** in Blacksburg-Christiansburg supporting innovation and skilled employment.
- **Public lands and outdoor recreation** enhancing quality of life, tourism, and regional identity.
- **Accessibility via major transportation corridors**, including interstates I-81 and I-77.

Weaknesses

- **Wage disparities** discouraging pursuit of skilled training and certifications.
- **Limited workforce availability to support industries**, compounded by talent and business loss to larger metropolitan areas.
- **Shortage of affordable and available housing**, with wages not keeping pace with rising housing costs.
- **Insufficient industrial sites and properties** for business growth and corporate relocations.
- **Training programs are limited in scope**, inclusivity, and should focus more on job quality and career growth opportunities.
- **Limited job opportunities for trailing spouses** of relocating professionals.
- **Gaps in healthcare access**, particularly OB-GYN and senior services.
- **Public transit and rural transportation** infrastructure remain inadequate despite progress with passenger rail expansion.



Opportunities

- **Enhanced placemaking to improve quality of life** and attract tourism.
- **Growth in life sciences and target industries**, with inspiration from regional success stories like GOVA Region 2's clean room.
- **Attracting remote workers and families** by leveraging broadband improvements and quality of life.
- **Development of outdoor recreation as a destination** through strategic regional collaboration.
- **Strengthened K-12 and business partnerships** to educate students about local opportunities and build a future workforce pipeline.
- **Expansion of higher education opportunities through partnerships** with Virginia Tech, Radford University, and local community colleges.
- **Retaining local university graduates** through stronger connections to the region's workforce and industries.

Threats

- **Slower IT sector growth** potentially impacting long-term economic stability.
- **Continued gaps in healthcare access** diminishing quality of life and talent retention.
- **Persistent housing shortages** hindering workforce attraction and retention.
- **Lack of public transportation** limiting regional accessibility and economic momentum.
- **Childcare shortages** creating challenges for families and reducing workforce participation.
- **Federal funding uncertainties** jeopardizing regional programs and initiatives.
- **Limited venture capital** forcing businesses to relocate to better-funded regions.
- **Exposure to extreme weather events** and ongoing climate risks threatening infrastructure and regional assets.



6580 Valley Center Drive | Suite 124 | Radford, VA 24141 | 540-639-9313

N R V R C . O R G

MEMORANDUM

To: NRVRC Board Members

From: Kevin Byrd, Executive Director

Date: May 16, 2025

Re: Federal Program Impacts: Legislative Outreach/Communication

Earlier this month, the National Association of Development Organizations (NADO), which the Regional Commission is a member and relies on for insight in federal programs, sent out an email informing members the White House released an initial abbreviated version of the President's FY26 Budget Request, commonly referred to as the "Skinny Budget", which is linked [here](#). The President's Budget Request proposes elimination of the US Economic Development Administration (EDA), Housing and Urban Development (HUD) Community Development Block Grants (CDBG), HUD HOME Investment Partnerships, and significant decreases to the Appalachian Regional Commission. Announced this week was the elimination of the Broadband Equity Access and Deployment (BEAD) program which there were numerous applications currently under review submitted by internet service providers in the region to serve the rural areas. An article from the Cardinal News on May 16th about the BEAD program can be found [here](#).

The CDBG and HOME Investment Partnerships have supported successful projects in every community in the region. None of which would have been completed by private sector partners alone, although most all have a primary private owner/investor/beneficiary. Projects such as the Prices Fork School Reuse which has 32 apartments with some units being income restricted and age restricted (55+) along with a restaurant (locally owned), microbrewery (locally owned) and a shared-use commercial kitchen for food-based entrepreneurs (managed by local nonprofit, Live, Work, Eat, Grow). Other projects include West Main Street Redevelopment in Radford, Downtown Revitalization in Floyd, West Main Street Redevelopment in Pulaski, Scattered Site Housing Improvements in Floyd County, and many more.

US EDA investments include VT Corporate Research Center Phase I and Phase II, water/sewer/natural gas investments at the NRV Commerce Park, wastewater improvements for Pulaski Town to retain several hundred jobs at James Hardie, Falling Branch Corporate Park in Montgomery County site expansion evaluation, Glen Lyn Coal Fired Power Plant Site Reuse. Those projects are awarded on a highly competitive basis within the past five years, with the exception of CRC Phase I. Thousands of jobs are facilitated through those investments that require more than 50% local share.

Strengthening the Region through Collaboration

Counties

Floyd | Giles
Montgomery | Pulaski
City
Radford

Towns

Blacksburg | Christiansburg
Floyd | Narrows | Pearisburg
Pembroke | Pulaski
Rich Creek

Higher Education

Virginia Tech
Radford University
New River Community College

Given the substantive nature of these federal programs spurring private investment in the New River Valley economy, the Regional Commission may wish to send a letter to the Congressional Delegation along with representatives in the Virginia General Assembly to ensure each are aware of the impact these programs have within the region. It is important to note, previous presidential administrations have proposed similar budget initiatives such as elimination of EDA and HUD programs. However, Congress handles appropriations, and it is important to keep the members of Congress and the Virginia General Assembly representatives apprised of potential impacts to the region.



6580 Valley Center Drive | Suite 124 | Radford, VA 24141 | 540-639-9313

N R V R C . O R G

MEMORANDUM

To: NRVRC Commissioners

From: Kevin Byrd, Executive Director

Date: May 15, 2025

Re: Annual Commission Awards Process and Criteria for Review/Discussion

In 2014 the Commission initiated an awards program. The Commission identified three award categories, established criteria and solicits nominees each year. The previous award recipients are listed at the end of the memo. Below are the award criteria and the process anticipated for the 2025 awards for review and discussion before launching the call for nominees which will be due by August 15th.

Champion of the Valley: an elected or appointed official (past or present) from within or representing the New River Valley that has made significant contributions for the betterment of the region. Focus will be on candidates that have regional impact, improve communities through their dedication, and collaborative approach.

Citizen of the Valley: an individual or organization within the New River Valley that has made significant contributions toward the betterment of the region. Focus will be on candidates that improve communities through their dedication, collaborative approach, and overall impact.

Friend of the Valley: an individual or organization outside of the New River Valley that has made significant contributions to the betterment of the region. Focus will be on candidates that improve communities through their regional impact, dedication, and collaborative approach.

Please tell us why you think your nominee should be recognized as exemplifying one of the award categories in 750 words or less. This input will be the primary document used to select award recipients. Nominations should include examples of how the candidate contributes within the context of the proposed award category. In addition, you may want to include how the candidate impressed you or has influenced your work, what projects, positions and/or volunteer activities the candidate has been engaged with, and/or why the candidate stands out and should be recognized. Previous nominees may be resubmitted for consideration. The Regional Commission Board of Directors will select the 2025 award recipients by ballot at their meeting on August 28th.

Process:

May – Commission review award criteria and process

June – Release call for award nominees, due August 15th

August – Commission review and select award recipients

September – Contact award recipients to ensure schedule availability for October award presentation

October – Present awards at annual dinner event

Past Award Winners**Champion of the Valley**

2014 – Joseph Sheffey (Pulaski County Board of Supervisors, retired)

2015 – Congressman Rick Boucher (9th Congressional District, retired)

2016 – Delegate Joseph Yost and William Brown (12th House District in Virginia; Montgomery County Board of Supervisors, retired)

2017 – Chris McKlarney (Giles County Administrator)

2018 – Susan Kidd (Director of Strategic Development – Town of Narrows)

2019 – Delegate Nick Rush (7th House District in Virginia)

2020 – Chris Tuck (Montgomery County Board of Supervisors, retired)

2021 – Lydeana Martin (Floyd County) and Craig Meadows (Montgomery County Administrator)

2022 – Penny Franklin (Montgomery County School Board)

2023 – Delegate Jason Ballard (12th House District in Virginia)

2023 – Robert Graham (Superintendent Pulaski County Schools)

2024 – Jonathan Sweet (Pulaski County Administrator)

Citizen of the Valley

2014 – Dr. Charles Steger (Virginia Tech President, retired)

2015 – Mr. Ken Anderson (Anderson and Associates, retired)

2016 – Penelope Kyle, JD (Radford University President, 2005-2016)

2017 – Woody Crenshaw (Floyd Entrepreneur)

2018 – P. Buckley Moss (Artist/Philanthropist) and David Hagan (Business Owner/Community Investor)

2019 – Raymond Smoot (Community Leader)

2020 – Bill Ellenbogen (Community Advocate)

2021 – Shelley Fortier (Habitat for Humanity of the NRV, retired) and John Dooley (VT Foundation, retired)

2022 – Janaka Casper (Community Housing Partners)

2023 – Cathy Hanks (Friends of Peak Creek & New River Conservancy)

2024 – Dr. Pat Huber (New River Community College) and Sandy Davis (Community Leader)

Friend of the Valley

2016 – Mary Moody Northen Foundation (Mountain Lake Lodge)

2017 – Bill Shelton (Director of the Virginia Department of Housing and Community Development)

2019 – John Smolak, III (Appalachian Power)

2022 – New River Conservancy



6580 Valley Center Drive | Suite 124 | Radford, VA 24141 | 540-639-9313

NRVRC.ORG

MEMORANDUM

To: NRVRC Board Members
From: Kevin Byrd, Executive Director
Date: May 16, 2025
Re: FY26 Nominating Committee – Slate of Officers Presented

Each spring the Regional Commission board selects leadership to serve on the Executive Committee for the following fiscal year. The nominating committee is prescribed in the bylaws to consist of the Chair, Treasurer, and a Commission member at-large appointed by the Chair. Chair Johnson appointed Larry Clevinger to the Member At-Large position. The Executive Committee is comprised of the Chair, Vice-Chair, Treasurer, Past Chair, and at-large seats. The Executive Committee meets on the third Wednesday at Noon with the Executive Director to review financials, the upcoming meeting agenda, and discussion of timely regional issues. The Nominating Committee will present their slate of officers at the May meeting with voting on officers scheduled for the June meeting.

Strengthening the Region through Collaboration

Counties

Floyd | Giles
Montgomery | Pulaski
City
Radford

Towns

Blacksburg | Christiansburg
Floyd | Narrows | Pearisburg
Pembroke | Pulaski
Rich Creek

Higher Education

Virginia Tech
Radford University
New River Community College