



NRV Hazard Mitigation Plan 2016/2017 Update Steering Committee

May 4, 2017, 10:30 am - 12:00 pm

New River Room, New River Valley Business Center
Fairlawn, VA

Agenda

1. Welcome Christy Straight
2. Presentation on the High Water Mark Campaign
Michelle L. Hamor, Chief, Flood Plain Management Services Section, Norfolk
District, US Army Corps of Engineers
3. Draft plan: highlights of local review process..... Christy Straight
4. Wrap Up Christy Straight
 - a. Next steps
 - b. Next meeting – Steering Committee

NRV Hazard Mitigation Plan - 2016/17 Plan Update

May 4, 2017 - 10:30 am

	Name	Organization/Representing	Email (if new)
1	A.T. DRANSUN, e	RUOEP	atbransco @ radford.edu
2	Grad DeVilbiss	RU	jdevilbiss@radford.edu
3	Robbie Kiser	Town of Pulaski	rkiser@pulaskitown.org
4	Buddy KAST	TOWN of NARROWS	jkast@townofnarrows.org
5	JOHN ROSS	GILES COUNTY	jross@gilescounty.org
6	Jonathan Simmons	UDEM Reg. 6	jonathan.simmons@udem.virginia.gov
7	Rick TAWNEY	TOWN of Pearisburg	rtawney@pearisburg.org
8	KAFI HOWARD	Town of Blacksburg	khoward@blacksburg.gov
9	KALI CASPER	Town of Blacksburg	kcasper@blacksburg.gov
10	Will Drake	Town of Christiansburg	wdrake@christiansburg.org
11			
12			
13			
14			
15			
16			
17			
18			
19			
20			
21			
22			
23			
24			
25			
26			
27			
28			
29			
30			
31			
32			
33			
34			
35			



Regional Hazard Mitigation Plan Update

Steering Committee

May 4, 2017

N R V R C . O R G



Today we will

- Hear from Michelle Hamor (USACE) on the High Water Mark Campaign
- Discuss Plan review by steering committee and localities
- Review next steps

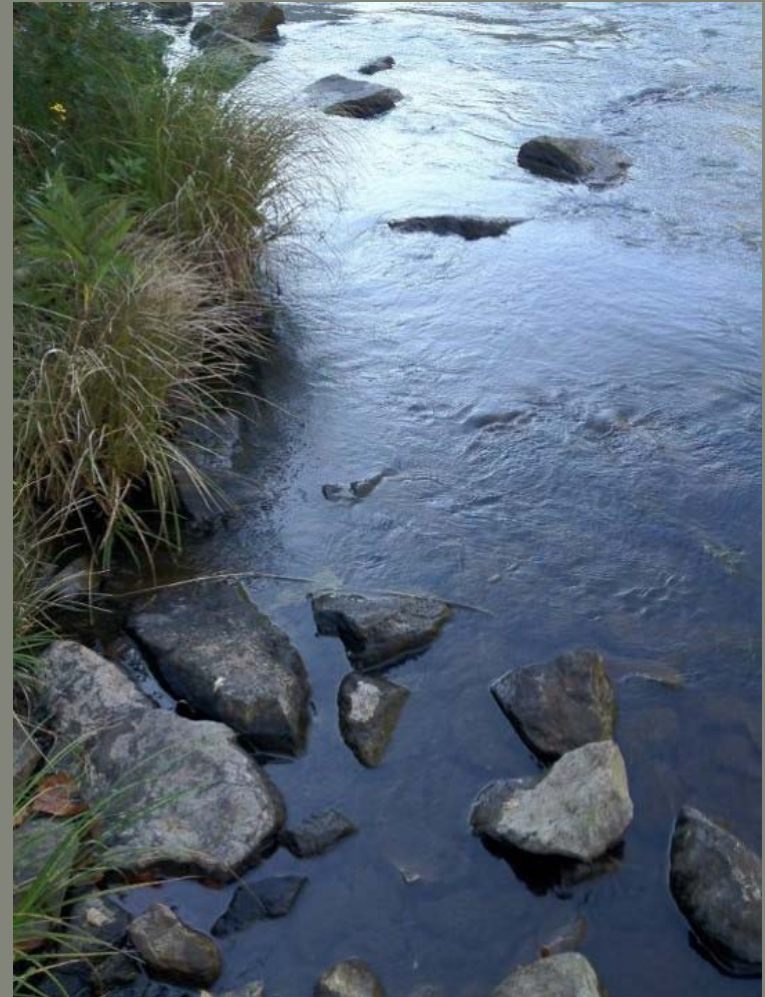
N R V R C . O R G

USACE PROGRAMS

Michelle Hamor
Chief, Flood Plain Management Services
Section

Richard Harr
Planning Assistance to States
Program Manager

Norfolk District, USACE



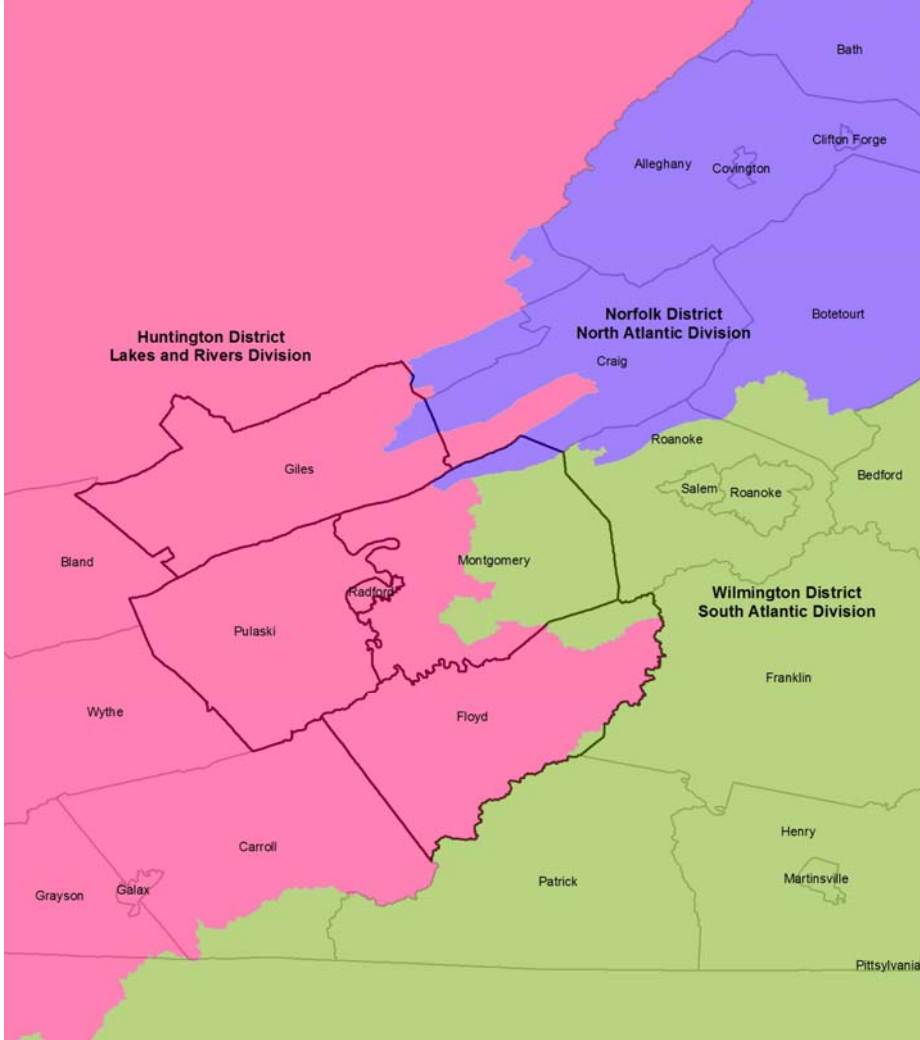
**US Army Corps
of Engineers®**



U.S. ARMY

OVERVIEW

3 Districts
3 Divisions



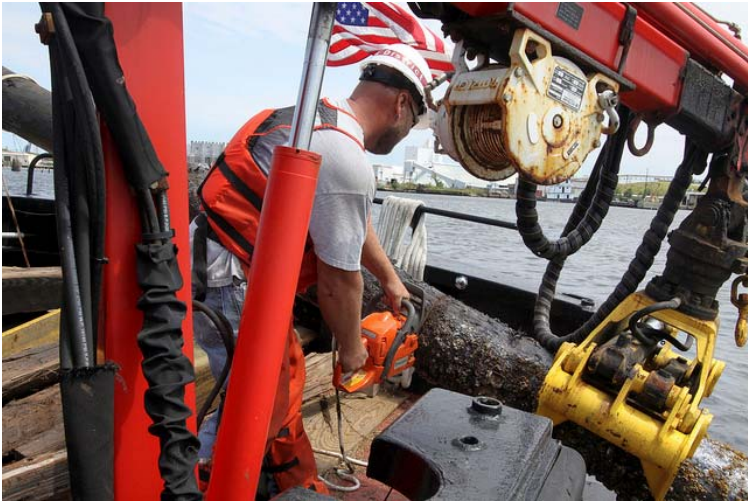
US Army Corps of Engineers



U.S. ARMY

RESPONSE

- Emergency Operations
 - Reservoir Operations
 - Liaison to State EOC
 - Advance Measures
 - Technical Assistance
 - Direct Assistance
- Drift Removal



RECOVERY

USACE Rehabilitation Assistance Program (PL84-99)



MITIGATION & PREPARATION AND TRAINING

PROGRAMS

- Flood Plain Management Services Program
- Planning Assistance to States
- Silver Jackets
- Inspection of Completed Works
- Section 408 Permits

Projects

- General Investigations
- Continuing Authorities Program



Army Corps
Engineers



FLOOD PLAIN MANAGEMENT SERVICES

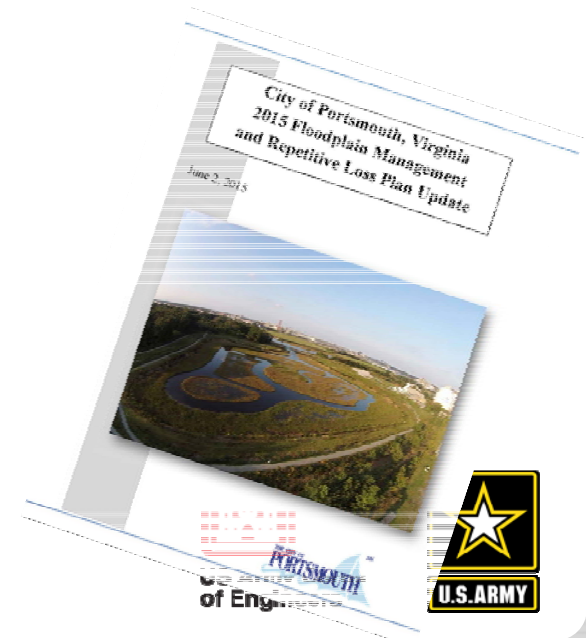
Authority: Section 206 of the 1960 Flood Control Act (PL 86-645), as amended.

Objective: Foster public understanding of the hazards and to promote prudent use and management of the Nation's flood plains.

100% Federal funding, however, contributions from agency and sponsor partners can help expand the scope.

100% Federal funding for studies. Examples include:

- Floodplain Management Plan, City of Portsmouth
- H&H modeling and mapping – Newmarket Creek
- Finished Floor Elevation calculations
- Vulnerability Studies



PLANNING ASSISTANCE TO STATES

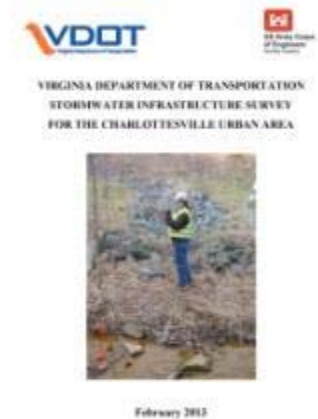
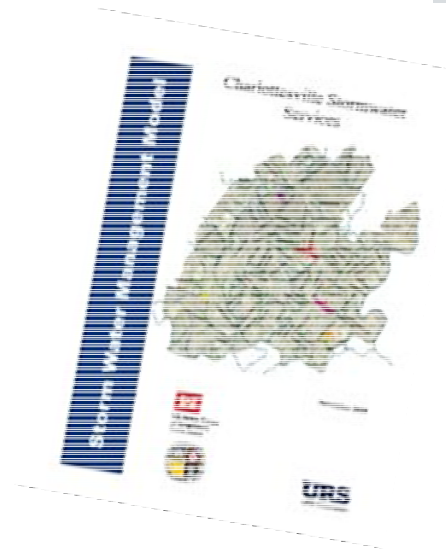
Authority: Section 22 of the Water Resources Development Act of 1974, as amended.

Objective: Preparation of comprehensive plans for the development, utilization, and conservation of water and related land

50/50 Cost Share (up to 100% in-kind)

Study examples include:

- Flood Plain Management
- Flood Damage Reduction
- Water Quality
- Wetlands Evaluation
- VDOT Outfall Survey

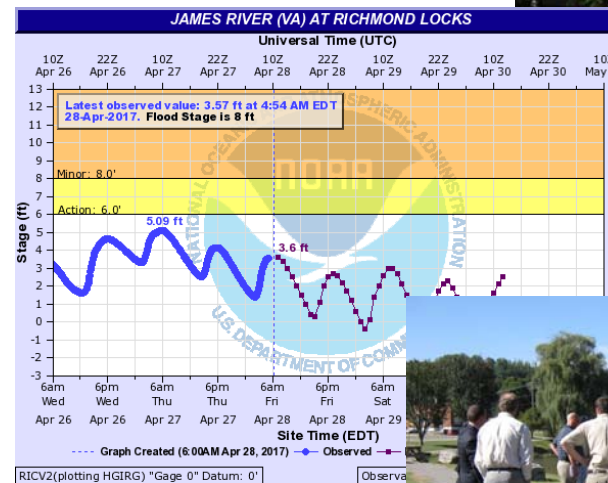
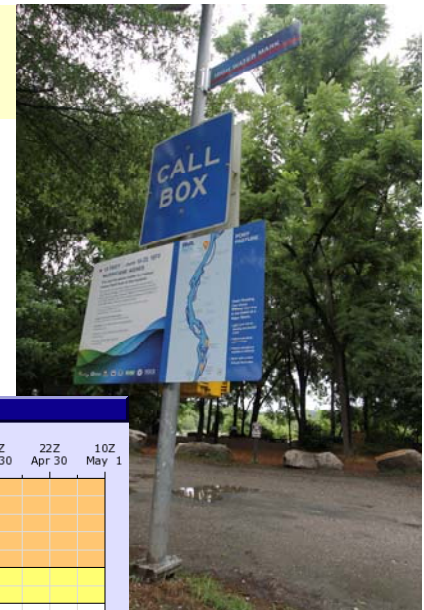


SILVER JACKETS

Silver Jackets Teams are state-led interagency teams with the goal of providing a holistic approach to flood risk management through the collaboration of Federal, state, local and tribal partners.

Interagency examples include:

- Development of forecast points
- City Locks
- Franklin
- High water mark signs
- Multi-Hazard Tournament
- Flood Risk Guide
- Site Visits – Town of Narrows, Giles County



PREPARATION / TRAINING

PROGRAMS

Inspection of Completed Works

- Routine and Periodic Inspections
- Levee Classification

Section 408 Permit – protecting the project life and purpose



CONTINUING AUTHORITIES PROGRAM

Newmarket Creek
Newport News and Hampton
Section 205



Tangier Jetty, Tangier Island
Section 107



Courtesy - Washington Post

Buckroe Beach, Hampton
Section 103



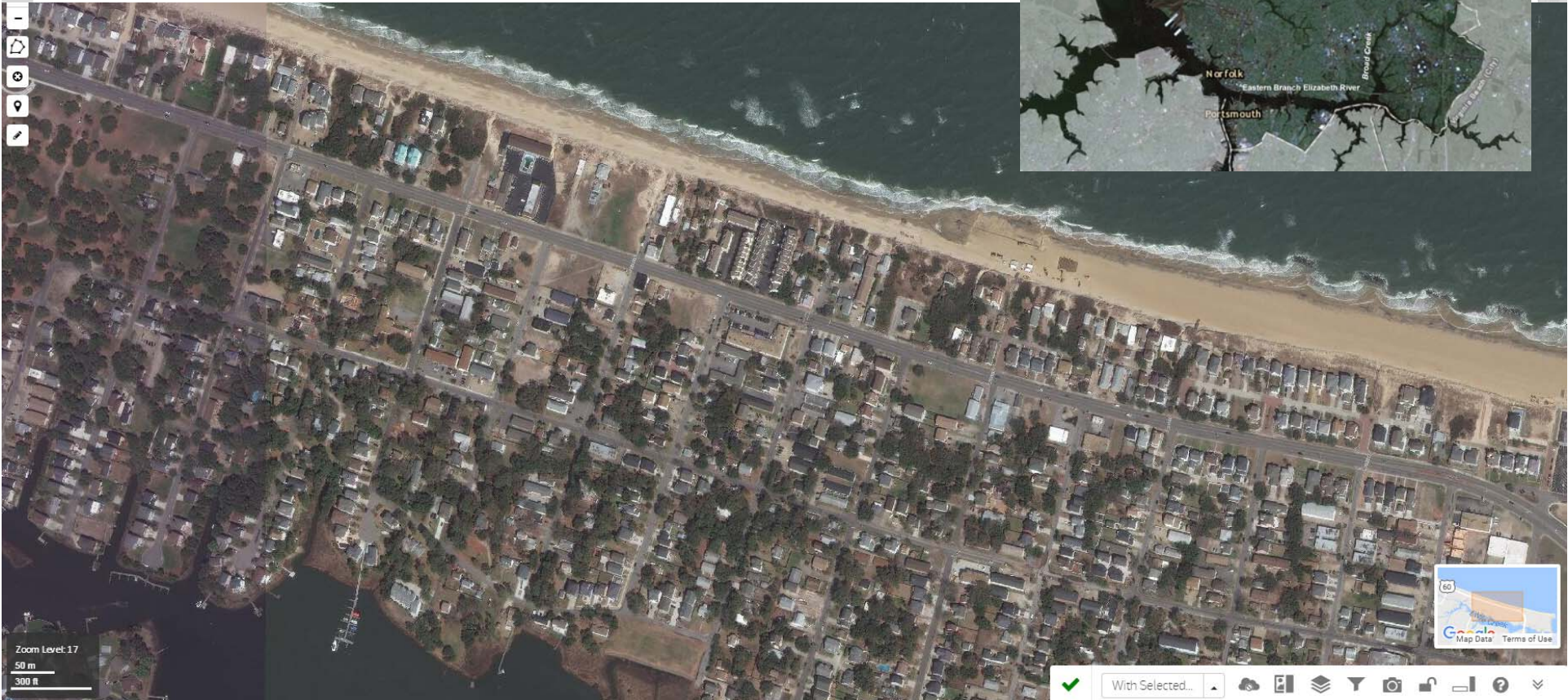
ODU Drainage Canal Wetland
Restoration, Section 206



MITIGATION

PROJECTS

- General Investigations
- Continuing Authorities Program



Questions?



Draft Final Plan

- Chapters are available on line
- Steering Committee review and comment
- All participating localities also need to review and comment
- Comments due to NRVRC by May 31 (a Wednesday)
- Comments will be addressed and the final sent to VDEM by June 15



N R V R C . O R G

Draft Final Plan



Draft Plan

The 2017 plan is an update to the 2011 plan. The 2011 plan can be found [here](#). Links to chapters for 2017 will be posted below as they become available. Comments on the information presented is welcome. You can submit those [here](#).

- Cover, Acknowledgements, and Table of Contents
- Chapter 1: Introduction
- Chapter 2: Community Profile
- Chapter 3: Planning Process
- Chapter 4: Hazard Identification & Risk Assessment
- Chapter 5: Mitigation Strategy
- Chapter 6: Community Summaries
- Chapter 7: Plan Maintenance
- Appendix 4: All Mitigation Projects

Upcoming tasks



- MAY - Plan review (Steering committee) – comments due back to NRVRC by May 31
- MAY/JUNE – Host 5 public information meetings (Commission staff) in each County/City
- June 15 – Submit plan to VDEM for review

N R V R C . O R G

Wrap up



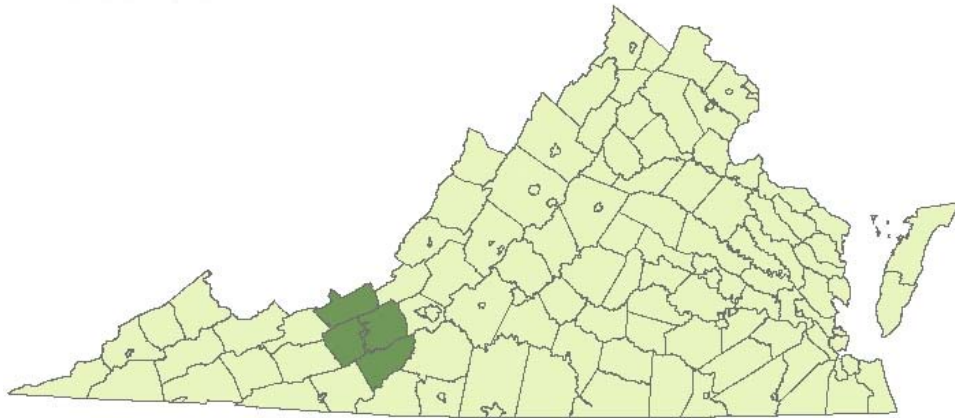
- Questions?
- Next meeting – Steering Committee
To be determined on an as needed basis
- Contact information for NRVRC
Christy Straight (cstraight@nrvc.org)
Michael Gottfredson (michaelg@nrvc.org)
Zach Swick (zswick@nrvc.org)
540.639.9313

Thank you for coming!

N R V R C . O R G

New River Valley Hazard Mitigation Plan Update 2017

**For the Counties of Floyd, Giles, Montgomery and Pulaski, the City of Radford,
and the Towns of Blacksburg, Christiansburg, Narrows, Pearisburg,
Pembroke, Pulaski, and Rich Creek**



Approved and Adopted; Effective until November 28, 2016

Directed by the

New River Valley Hazard Mitigation Steering Committee

Prepared by

New River Valley Regional Commission

Funding through the **Virginia Department of Emergency Management and the
Federal Emergency Management Agency**



**New River Valley Hazard Mitigation
Steering Committee** participants

included:

Jay Eanes, City of Radford

Melissa Skelton, City of Radford

Kevin Sowers, Floyd County

Lydeana Martin, Floyd County

John Ross, Giles County

Emily Gibson, Montgomery County

Eli Sharp, NRVRC

Peter Corrigan, NWS/NOAA

Danny Wilson, Pulaski County

Josh Tolbert, Pulaski County

Todd Branscome, Radford University

Grady DeVilbiss, Radford University

Kali Casper, Town of Blacksburg

Will Drake, Town of Christiansburg

Buddy Kast, Town of Narrows

Robbie Kiser, Town of Pulaski

Willie Richardson, VDEM - Region 4

Sara Harrington, VDEM - Region 4

Jonathan Simmons, VDEM - Region 6

New River Valley Regional Commission

staff included

Kevin Byrd

Elijah Sharp

Christy Straight

Michael Gottfredson

Zachary Swick



Contents

Chapter 1. Introduction	1-1
1.1 Hazard Mitigation Planning	1-1
1.2 History of Hazard Mitigation Planning in the United States.....	1-3
1.3 Hazard Mitigation Planning and the Commonwealth of Virginia	1-5
1.4 Virginia’s New River Valley Hazard Mitigation History	1-9
1.5 Hazard Mitigation: Links to Sustainability	1-11
1.6 New River Valley Hazard Mitigation Plan 2017	1-11
Chapter 2. Community Profile	2-1
2.1 Natural Features	2-2
2.2 General History	2-8
2.3 Population and Economy	2-9
2.4 Housing	2-11
2.5 Critical Infrastructure.....	2-12
2.6 Future Growth Areas	2-14
Chapter 3. Planning Process	3-1
3.1 Planning Team.....	3-1
3.2 Planning Process	3-2
3.3 Plan Participation	3-3
3.4 Plan Update	3-6
3.5 Public Involvement	3-7
Chapter 4. Hazard Identification and Risk Assessment (HIRA)	4-1
4.1 Introduction.....	4-1
4.2 Overview of Assessments	4-2
4.3 Drought.....	4-3
4.4 Geologic Hazards: Landslides, Rockfall, Karst, and Earthquakes	4-17
4.5 Flooding: Riverine, Flash Flooding and Dam Inundation	4-38



4.6	Severe Weather: Severe Winter Weather, High Winds, and Tornadoes	4-85
4.7	Wildfire	4-106
4.8	Human-caused Hazards.....	4-116
Chapter 5. Mitigation Strategy.....		5-1
5.1	Mitigation Goals and Objectives.....	5-1
5.2	Implementation Projects.....	5-9
5.3	Capabilities Assessment.....	5-11
Chapter 6. Community Summaries.....		6-1
6.1	Floyd County.....	6-1
6.2	Giles County.....	6-3
6.3	Montgomery County.....	6-5
6.4	Town of Blacksburg	6-6
6.5	Town of Christiansburg	6-8
6.6	Pulaski County.....	6-9
6.7	Town of Pulaski	6-10
6.8	City of Radford	6-11
Chapter 7. Plan Maintenance		7-1
7.1	Plan Adoption.....	7-1
7.2	Plan Implementation.....	7-1
7.3	Plan Maintenance	7-2

Figures

Figure 1.1.	Emergency Management Phases.....	1-4
Figure 1.2.	Presidential Disaster Declarations in the New River Valley (1969-2016).....	1-7
Figure 1.3.	Before and After Photos from Giles County Property Acquisition.....	1-10
Figure 2.1.	Virginia’s New River Valley	2-1
Figure 2.2.	Topography of the New River Valley	2-2



Figure 2.3. Slopes of the New River Valley 2-3

Figure 2.4. NRV Geology..... 2-4

Figure 2.5. Karst Formations in the New River Valley 2-5

Figure 2.6. General Soils Associations in the NRV..... 2-6

Figure 2.7. Forest Classification in the NRV 2-7

Figure 2.8. NRV Hydrology 2-8

Figure 2.9. Population Trends in the New River Valley..... 2-10

Figure 2.10. Future Growth Areas in the NRV..... 2-15

Figure 3.1. NRV Planning Team Organization..... 3-2

Figure 4.1. Impact Extent during 2000-2002 Drought 4-4

Figure 4.2. Impact Extent during 2007-2009 Drought 4-5

Figure 4.3. Drought Frequency..... 4-6

Figure 4.4. Drought Monitor Data: 2001 to 2014 4-7

Figure 4.5. Well Permits in the NRV 4-11

Figure 4.6. Mountain Lake, 2002..... 4-15

Figure 4.7. Rain barrel 4-16

Figure 4.8. Minor landslide in Elliston, February 2003 4-18

Figure 4.9. Rockfall in Pulaski County, March 2010 4-19

Figure 4.10. Level I Stability Analysis (LISA) model..... 4-20

Figure 4.11. NRV Rockfall Hazard..... 4-22

Figure 4.12. Sample field data collection sheet for rating highway rockfall hazards..... 4-23

Figure 4.13. Safety fence along I-81 near Christiansburg Mountain..... 4-25

Figure 4.14. Cover Collapse Sinkhole 4-26

Figure 4.15. Subsidence Sinkhole 4-26



Figure 4.16. Sinkhole in Castle Rock Recreation Area, Giles County 4-27

Figure 4.17. Generalized 100-Year Floodplain..... 4-39

Figure 4.18. Building Exposure in the 100-Year Flood Zone 4-57

Figure 4.19. Heavy Ice, Floyd County, December 2002..... 4-86

Figure 4.20. Wind Damage, Pembroke, February 2003..... 4-86

Figure 4.21. Non-Rotation Wind Risk Assessment 4-96

Figure 4.22. Rebuilding Homes Post-tornado in Pulaski County..... 4-99

Figure 4.23. Virginia Tornado Hazard Frequency and F2+ Hazard Frequency..... 4-104

Figure 4.24. Forest Cover in the New River Valley..... 4-108

Figure 4.25. Helicopter flies over Poor Mountain Fire, 2003 4-109

Tables

Table 1.1. Repetitive and Severe Repetitive Loss Properties by Locality..... 1-2

Table 1.2. Major US Disasters, 1989-1994 1-4

Table 1.3. Presidential Disaster Declarations in Virginia Since 1969 1-5

Table 1.4. State Assessment of Relative Risk of Natural Hazards* 1-8

Table 1.5. NRV Adoption of Previous Hazard Mitigation Plans..... 1-9

Table 2.1. Population for NRV Localities 2-9

Table 2.2. Income and Employment Characteristics in the NRV 2-11

Table 2.3. 2010 General Housing Characteristics 2-11

Table 2.4. Mobile Homes in the NRV 2-12

Table 2.5. Year Housing Structures Were Built in the NRV 2-12

Table 2.6. Ten Largest Employers in the NRV – 3rd Quarter 2016..... 2-13

Table 3.1. Locality Participation 2005, 2011, 2017 3-3



Table 3.2. Plan Participation	3-4
Table 3.3. Plans Reviewed during Planning Process.....	3-7
Table 4.1. New River Valley Regional Assessment of Relative Risk of Natural Hazards.....	4-3
Table 4.2. Drought Monitor Status Descriptions.....	4-4
Table 4.3. Populations with Public and Private Water Sources	4-10
Table 4.4. Agricultural Losses 2000-2002 Drought	4-14
Table 4.5. Richter/Modified Mercalli Scales for Earthquakes	4-30
Table 4.6. HAZUS Earthquake Total Annualized Loss	4-34
Table 4.7. FEMA Special Flood Hazard Area designations and probabilities	4-39
Table 4.8. Repetitive and Severe Repetitive Loss Properties by Locality.....	4-40
Table 4.9. Regulated Dams in the NRV	4-42
Table 4.10. 100-year Flood Zone Area.....	4-45
Table 4.11. Building Damage by Building Type	4-47
Table 4.12. Building Damage by General Occupancy.....	4-48
Table 4.13. Building Stock Exposure by Building Type	4-50
Table 4.14. Building Stock Exposure by Occupancy.....	4-50
Table 4.15. Transportation System Dollar Exposure	4-52
Table 4.16. Utility System Dollar Exposure	4-53
Table 4.17. Vehicle Dollar Exposure – Day.....	4-54
Table 4.18. Vehicle Dollar Exposure – Night	4-54
Table 4.19. Direct Economic Annualized Capital Stock Losses for Buildings in the NRV	4-55
Table 4.20. TEIF modeling of SFHA and Building Exposure	4-56
Table 4.21. NESIS Categories.....	4-87
Table 4.22. Beaufort Wind Scale	4-94



Table 4.23. Wind speeds and risk categories	4-95
Table 4.24. HAZUS-MH 3.1 Hurricane Wind Annualized Losses.....	4-96
Table 4.25. Enhanced Fujita Scale.....	4-98
Table 4.26. NRV Tornadoes 1987-2011	4-99
Table 4.27. Tornado Hazard and Frequency	4-104
Table 4.28. Acreages and Averages for Wildfires 2002-2016.....	4-107
Table 4.29. Floyd County Roadway Bridges.....	4-132
Table 4.30. Giles County Roadway Bridges.....	4-132
Table 4.31. Montgomery County Roadway Bridges.....	4-134
Table 4.32. Pulaski County Roadway Bridges.....	4-135
Table 4.33. City of Radford Roadway Bridges.....	4-137
Table 4.34. NRV Aviation Infrastructure.....	4-137
Table 4.35. NRV Railway Infrastructure.....	4-137
Table 4.36. NRV Public Transportation Assets.....	4-139
Table 5.1. Regional Projects and Priority Rankings.....	5-10
Table 5.2. Administrative and Organizational Capabilities	5-12
Table 5.3. Planning and Regulatory Capabilities	5-13
Table 5.4. Fiscal Capability	5-14
Table 6-1. Floyd County Hazard Mitigation Opportunities.....	6-2
Table 6-2. Giles County Hazard Mitigation Opportunities	6-4
Table 6-3. Town of Narrows Hazard Mitigation Opportunities	6-4
Table 6-4. Town of Pearisburg Mitigation Opportunities.....	6-4
Table 6-5. Town of Pembroke Hazard Mitigation Opportunities	6-4
Table 6-6. Town of Rich Creek Hazard Mitigation Opportunities.....	6-4



Table 6-7. Montgomery County Hazard Mitigation Opportunities	6-6
Table 6-8. Town of Blacksburg Hazard Mitigation Opportunities	6-7
Table 6-9. Town of Christiansburg Hazard Mitigation Opportunities.....	6-8
Table 6-10. Pulaski County Hazard Mitigation Opportunities.....	6-9
Table 6-11. Town of Pulaski Hazard Mitigation Opportunities.....	6-10
Table 6-12. City of Radford Hazard Mitigation Opportunities	6-12

Maps

Map 1. Average Annual Number of Weeks of Moderate or Worse Drought	4-8
Map 2. Average Annual Days of 90 Degrees or More.....	4-9
Map 3. NRV Mean Water Well Depths.....	4-12
Map 4. NRV Well Density.....	4-13
Map 5. Landslide Hazard Rating	4-21
Map 6. NRV Rockfall Hazard Rating Per Mile	4-24
Map 7. NRV Karst Geology	4-28
Map 8. Karst Density per Square Feet.....	4-29
Map 9. NRV 1897 Earthquake Loss Estimates	4-35
Map 10. NRV Magnitude 7.0 Earthquake Estimate Annualized Loss	4-36
Map 11. NRV Floodplains.....	4-45
Map 12. Floyd County Floodplains.....	4-59
Map 13. Town of Floyd Floodplains	4-60
Map 14. Giles County Floodplains	4-62
Map 15. Town of Glen Lyn Floodplains	4-63
Map 16. Town of Narrows Floodplains	4-64



Map 17. Town of Pearisburg Floodplains	4-65
Map 18. Town of Pembroke Floodplains	4-67
Map 19. Town of Rich Creek Floodplains	4-68
Map 20. Montgomery County Floodplains	4-70
Map 21. Town of Blacksburg Floodplains	4-72
Map 22. Town of Christiansburg Floodplains.....	4-73
Map 23. Pulaski County Floodplains.....	4-75
Map 24. Town of Dublin Floodplains.....	4-76
Map 25. Town of Pulaski Floodplains	4-77
Map 26. City of Radford Floodplains	4-79
Map 27. NRV Six-inch Snowfalls	4-88
Map 28. NRV Freezing Temperature	4-89
Map 29. Warming Winter Weather Trend.....	4-90
Map 30. Winter Weather Crash Density.....	4-91
Map 31. Winter Weather Crash Density (Normalized)	4-92
Map 32. Wind Gust Density	4-93
Map 33. Wind Gust Property Damage Density.....	4-94
Map 34. 100-Year Wind Event Annualized Loss	4-97
Map 35. 100-Year Wind Event Peak Gust.....	4-98
Map 36. NRV Tornado Hazard.....	4-101
Map 37. NRV Tornado Hazard F2+.....	4-102
Map 38. NRV Tornado History.....	4-103
Map 39. NRV Wildfires.....	4-109
Map 40. NRV Wildfire Risk Assessment.....	4-111



Map 41. NRV Wildfire Risk to Structures	4-112
Map 42. NRV Wildfire Risk to Exurban Structures.....	4-113
Map 43. Current Fire Mitigation and Response (with dry hydrants).....	4-114
Map 44. Current Fire Mitigation and Response (with fire response districts)	4-115
Map 45. Hazardous Materials	4-119
Map 46. Critical Facilities (law enforcement and schools)	4-121
Map 47. Critical Facilities (shelters and hospitals)	4-122
Map 48. Critical Utilities (power and cell towers).....	4-123
Map 49. Critical Utilities (water and wastewater).....	4-124
Map 50. Traffic Volume to Capacity.....	4-128
Map 51. Forecasted Traffic Volume to Capacity.....	4-129
Map 52. Level of Service for Principal Travel Corridors.....	4-130
Map 53. Level of Service Forecast for Principal Travel Corridors.....	4-131
Map 54. Transportation Infrastructure	4-139
Map 55. Traffic Bridges in the NRV	4-140
Map 56. High Volume Traffic Bridges	4-141

Appendices

Appendix 1: Meeting Documentation

Appendix 2: Adoption Resolutions

Appendix 3: Public Involvement Documentation

Appendix 4: Mitigation Projects

Appendix 5: Acronyms

Appendix 6: 11 by 17 Maps