



New River Water Trail Expansion Project

ARC Technical Assistance Grant, 2021



Executive Summary

The New River Water Trail was started by Giles County in 2015 and has been employed as a tourism and marketing program over the past seven years. In 2017, the New River Watershed Roundtable, a partnership of local and state government representatives, businesses, university educators, student groups, advocacy groups, and the public, began contemplating the use of mile markers as a safety tool for the New River. The idea of mile markers eventually gained momentum and talks began to expand the New River Water Trail by Pulaski, Montgomery and Giles Counties and the City of Radford and the towns therein. In 2021, in partnership with local governments, the New River Valley Regional Commission applied for an Appalachian Regional Commission Technical Assistance Grant to better understand the implementation opportunities related to the Water Trail. From that process the region explored the idea of four new and/or improved access points among several other initiatives, including signage, safety, stewardship, and marketing.

Access Points:

Locality	New/ Improvement	Name	Type
Pulaski County	New	Sheffey Park	Motorized Boat Access
City of Radford	New	Bisset Park	Paddle Craft Access (possibly ADA)
Montgomery County	Improvement	Whitethorne	Motorized Existing, Investment in additional parking and ADA access
Giles County	New	McCoy	Motorized Boat Access

Next Steps and Planned Activities from 2022 to 2026:

1. Increase and improve public access
2. Create regional website
3. Create and implement a NRWT signage plan
4. Update Regional NRWT map and recommend paddles with accompanying Maps
5. Continue and grow New River stewardship
6. Continue technical assistance with the support of the National Park Service Rivers, Trails and Conservation Assistance Program, including a) development of an organizational structure, b) completion of further gap analysis and c) development of a public-private partnership plan



Background:

The New River Water Trail (NRWT) was officially started in 2015 by a group of Giles County river stakeholders. Since that time, there has been an interest to expand the NRWT upstream to Pulaski County, City of Radford and Montgomery County. With the support of local tourism, the New River Watershed Roundtable and the New River Valley Regional Commission (NRVRC), conversations developed and in 2020 the NRVRC submitted a grant application to the Appalachian Regional Commission (ARC) to receive funds to support technical assistance towards planning expansion. In 2022, the team has expanded and is currently preparing an application to the ARC to implement many aspects of the NRWT. At the close of that grant the project team is applying for an Appalachian Regional Commission Implementation Grant to execute many elements of the New River Water Trail Implementation Plan. However, the team believes additional technical assistance is needed to fill some of the gaps that still exist in that plan, mainly for development of an organizational structure, further gap analysis for future increased access, and understanding how to successfully implement a public-private partnership as the "New River Water Trail" currently exists mostly on public land.

Overview of the Power Initiative and Planning Goals:

The Partnerships for Opportunity and Workforce and Economic Revitalization (POWER) program is a multi-agency effort. Coal production peaked around 1990 and has been declining ever since.³ A recent study completed by the Appalachian Regional Commission attributes the decline in the coal industry to two factors: 1) decreased natural gas prices that are leading to an increase in electricity generated by natural gas; and 2) a variety of environmental regulations and policy initiatives that have increased coal costs. The POWER program is intended to provide federal resources for communities and regions impacted by job losses in coal mining, power plant operations, and the supply chain. The program is supported by the Appalachian Regional Commission (ARC) and the Economic Development Administration (EDA). ARC's focus includes competitive workforce, access to and use of broadband, entrepreneurial activities, and industry clusters. EDA's focus includes new business and jobs across sectors, access to private capital, market access to goods and services from impacted areas, and strengthening/developing existing and/or emerging industry clusters.

The goal of the region's participation in the POWER Technical Assistance Grant is to better understand how to expand the New River Water Trail out of Giles County into the rest of the river community of the New River Valley. The project focused on exploring goals of regional partners, inventory of regional assets, create an understanding on how to improve access, and review of precedents. The New River Watershed Roundtable (NRWR) reformed in 2016 and gathers river stakeholders from across the region to meet on a quarterly basis. The Virginia Department of Environmental Quality funds the core of the NRWR



Introduction:

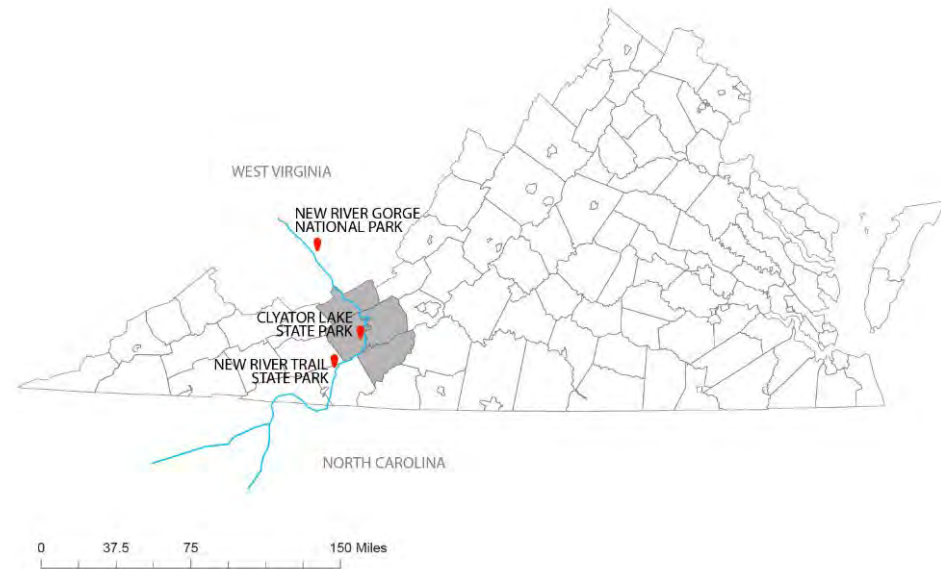
The New River is one of the most valuable assets in the New River Valley. It is the backbone of our region, originally settled because of its access to fresh water. The New River holds historic crossing points, endemic wildlife, amazing vistas, world class recreation, copious industry, and fantastic neighbors.

The New River, which is touted as one of the oldest rivers in the world, also runs North, its headwaters in Ashe County, North Carolina, flowing in and out of North Carolina and Virginia along the state line, before heading north in Grayson County and eventually entering Pulaski County. The New River Trail State Park sits on the southern border of the New River Valley and meanders from Pulaski south through Wythe, Carroll and Grayson Counties. In 2017, the trail boasted over one million visitors. The New River Trail

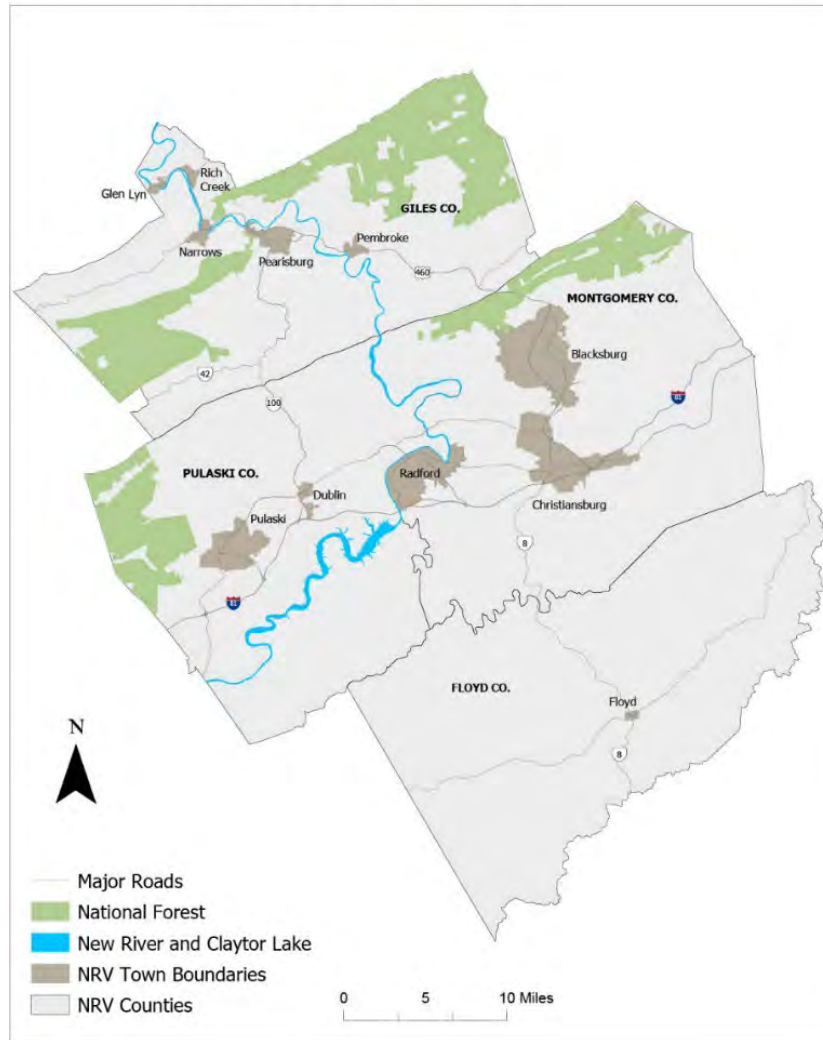
State Park is a premier rail to trail system utilized by cyclists, horseback riders, campers, etc. Upstream of the New River Valley along the New River lies the New River Gorge National Park. The newest national park in the United States, added to the inventory of national parks in 2020. New River Gorge National Park is a premier destination for rafting, climbing, and hiking, which received a record number of visitors in 2021 at 1.7 million. With so many visitors already coming to this region for recreation tourism, there is a large opportunity for the New River Valley to catalyze the surrounding energy.

Giles County launched the New River Water Trail in 2015, utilizing a tourism and marketing strategy to increase access, visibility, and information about the New River. The New River Water Trail brand was launched, and the trail currently stretches 37-miles through Giles County. The three New River Valley localities upstream expressed interest in extending the brand and decided to participate in the New River Water Trail Expansion Project, funded by the Appalachian Regional Commission with match from the New River Valley Regional Commission and Pulaski County, City of Radford, Montgomery County, and Giles County.

Each locality invited local experts to participate in the conversation, with a goal being to understand the regional vision for the New River Water Trail, inventory of existing assets and resources, identify additional partners and develop first round implementation goals.



Virginia's New River Valley



Project Team:

Anthony Akers – *Assistant County Administrator, Pulaski County*
Andy Borak – *Assistant Director of Outdoor Programs, Radford University*

Brad Buchanan – *Parks & Outdoor Recreation Supervisor, Montgomery Co.*

Cora Gnegy – *Tourism Marketing Director, Giles County*

Susan Kidd – *Strategic Development Director, Narrows, VA*

Irene Kilmer – *Acting Director of Tourism, Montgomery County*

Steve Knowles – *American Electric Power*

Fred Pierson – *Radford University, Recreation, Parks and Tourism/Experiential Learning*

Wilson Rankin – *Radford Citizen*

Kim Repass – *Director of Tourism, Radford*

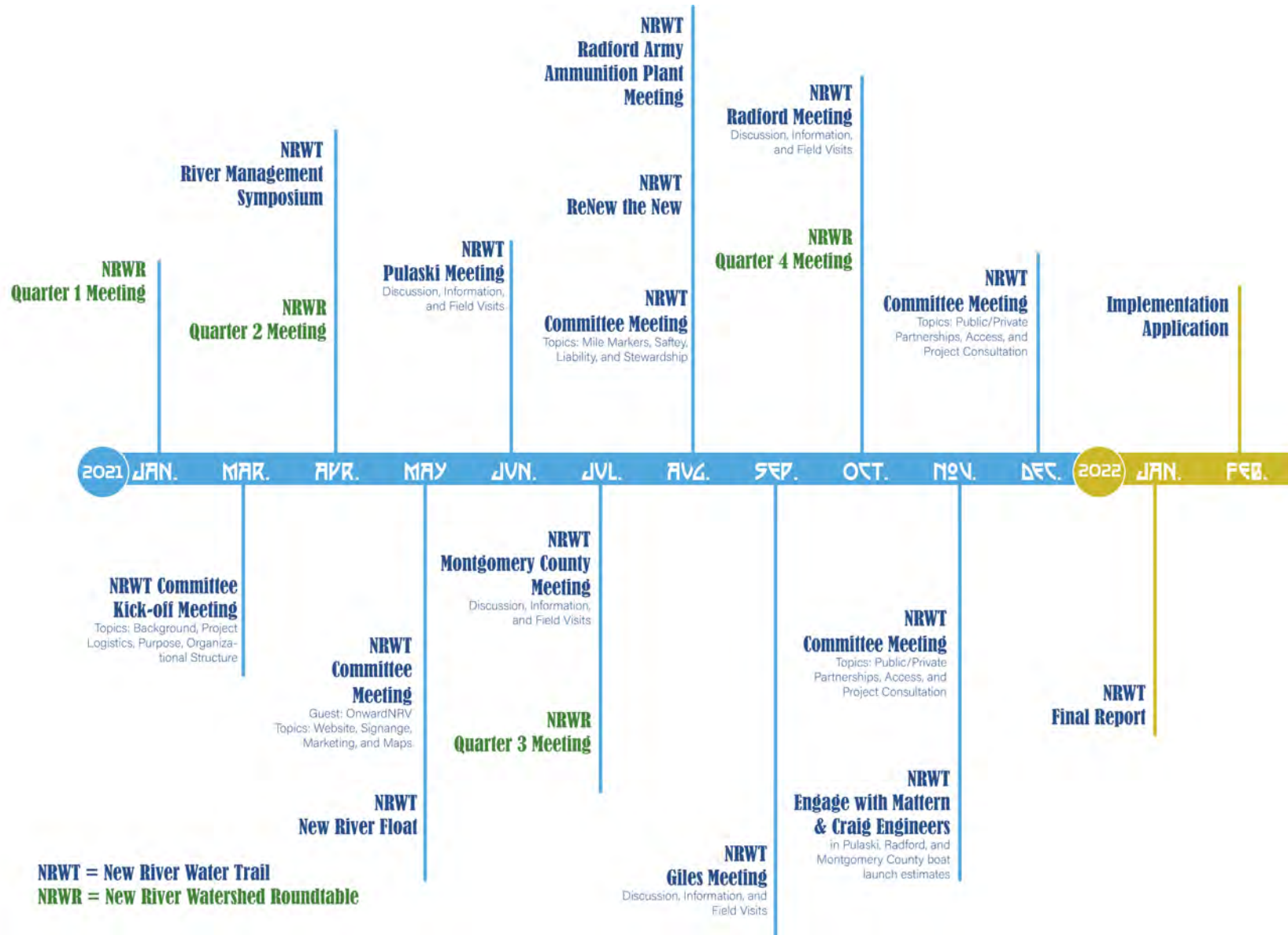
Leigh Stoudenmire – *New River Outdoor Co.*

Laura Walters – *Pulaski County Board of Supervisors*

Peggy White – *Director of Tourism, Pulaski County*

Guests Included: Tom Austin with *Mattern and Craig*, David Clarke with *Virginia Department of Transportation*, Tom Hampton with the *Department of Wildlife Resources*, Nathan Hilbert with the *National Park Service*, Liz Purcell with *Appalachian Electric Power*, and Bill Tanger with *Friends of Virginia Rivers*.

Process: The group met twice quarterly, once with the New River Water Trail project team and the other with the New River Watershed Roundtable (a broader base of river invested partners from around the region). Subgroups met intermittently for locality specific site visits and meetings.



Vision: Early-on the team carried out a group visioning exercise asking participants, *What would the New River look like in 10 years, in how it looks, feels, sounds and what else?* The responses from this exercise were used as guiding principles to ground the team's work over 2021.

What does the river feel like?

clean
visitors
wild new opportunity
inviting
cohesive experience for visitors
activities in conjunction with river experience
common thread for all nrv communities
directional signage
beautiful people floating
refreshing

safe
destination refreshing
easy navigation
healthy outdoor option
long distance paddle experiences
comfortable
magnet for recreation seekers
education for youth
fishing welcoming
inviting
good

What does the river sound like?

quiet
chatter of riverside
peaceful sounds of nature
everyone signing the same tune
all value the river for its beauty
all value the river for contribution to our communities
chatter of island camping options
locations along river with social voice
celebration of local communities
celebration of local people
celebration of local towns
natural

What does the river look like?

great place to be
synergy
good amount of bike/ boat racks
inclusion of indigenous people
collaboration of government levels working on shared vision for the nrv
share success of river based experiences to help launch other small businesses that support the river
support emergency response, marketing, and development of river
a connection for all aspects of nrv tourism
encourage small business growth
great place for activities
collaboration
regional authority/ committee
supports economic development
fear of the river
access to food, ice, supplies

Additional Comments?

Implementation Plan Across the Region: Throughout the course of the year, the region developed a list of five key core activities important to the expansion and continued development of the New River Water Trail, which are:

1. Improved Access
2. Signage + Safety
3. Marketing
4. Stewardship
5. Technical Assistance

1. Improved Access: The first step in understanding how and where to improve access was an inventory of existing access points and assets, as well as potential access points and assets. The overview of that analysis is laid out in the following maps and spreadsheet. The river was divided into two sections, Water Trail North and Water Trail South simply for the functional purpose of viewing within this report. From the access maps, a report was generated which evaluates the river access across the region. Ideal water trail segments would have access at intervals of four miles or less. These segments were rated as “good”. Sections with access between four and eight miles were rated as “fair” and segments with access at over eight-mile intervals were rated as “poor”.

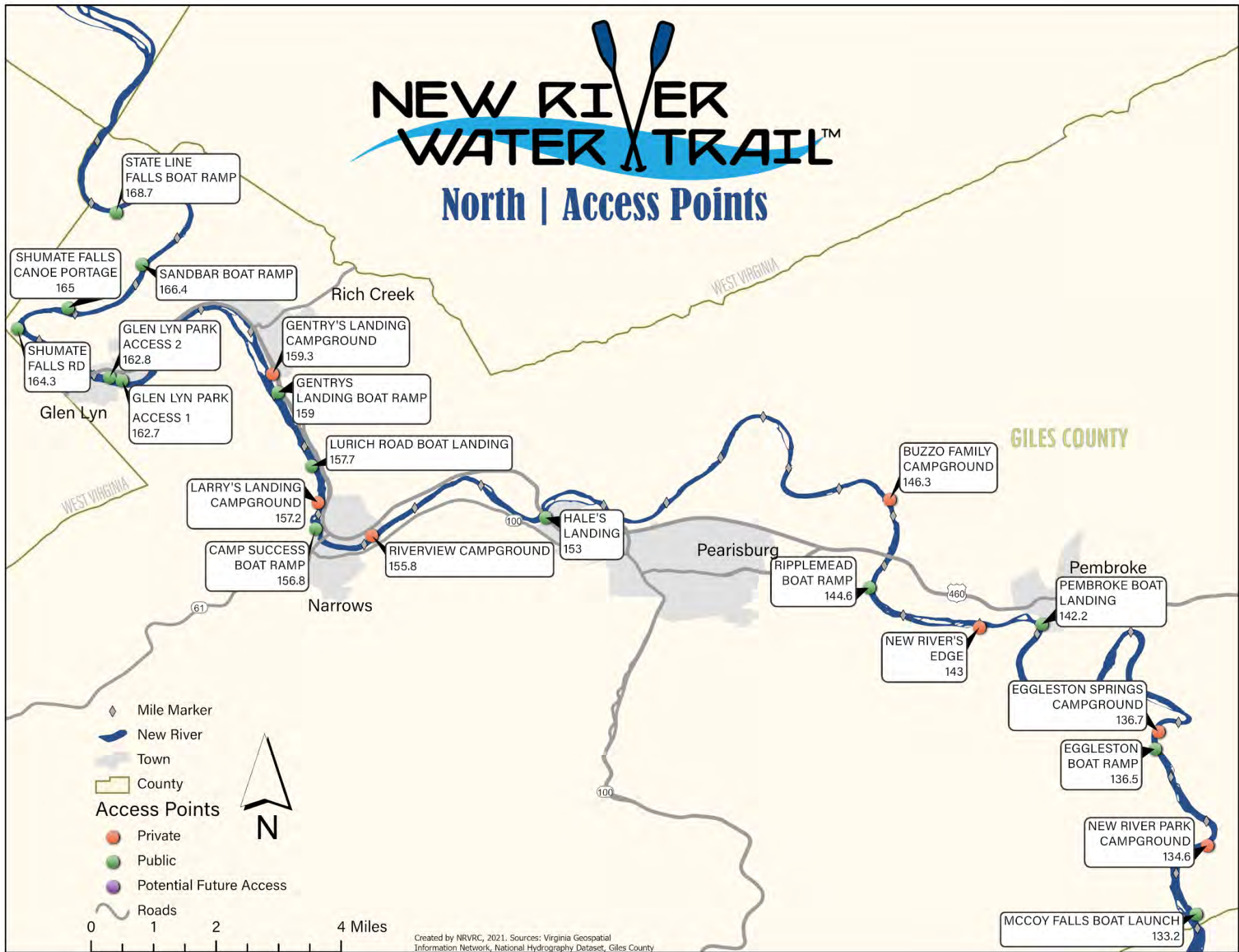
The project team added to the analysis map ownership data to better understand access improvement opportunities. Parcel ownership was analyzed in the following categories: Private, Government, Railroad, and VDOT. DCR Easements and Conservation Lands were also considered.

Notes: The legend for the maps on the following pages can be found in Appendix A. Additionally, the New River runs from South to North, one of the few rivers in the world to do so. On some maps, numbering and information follow the flow of the water.

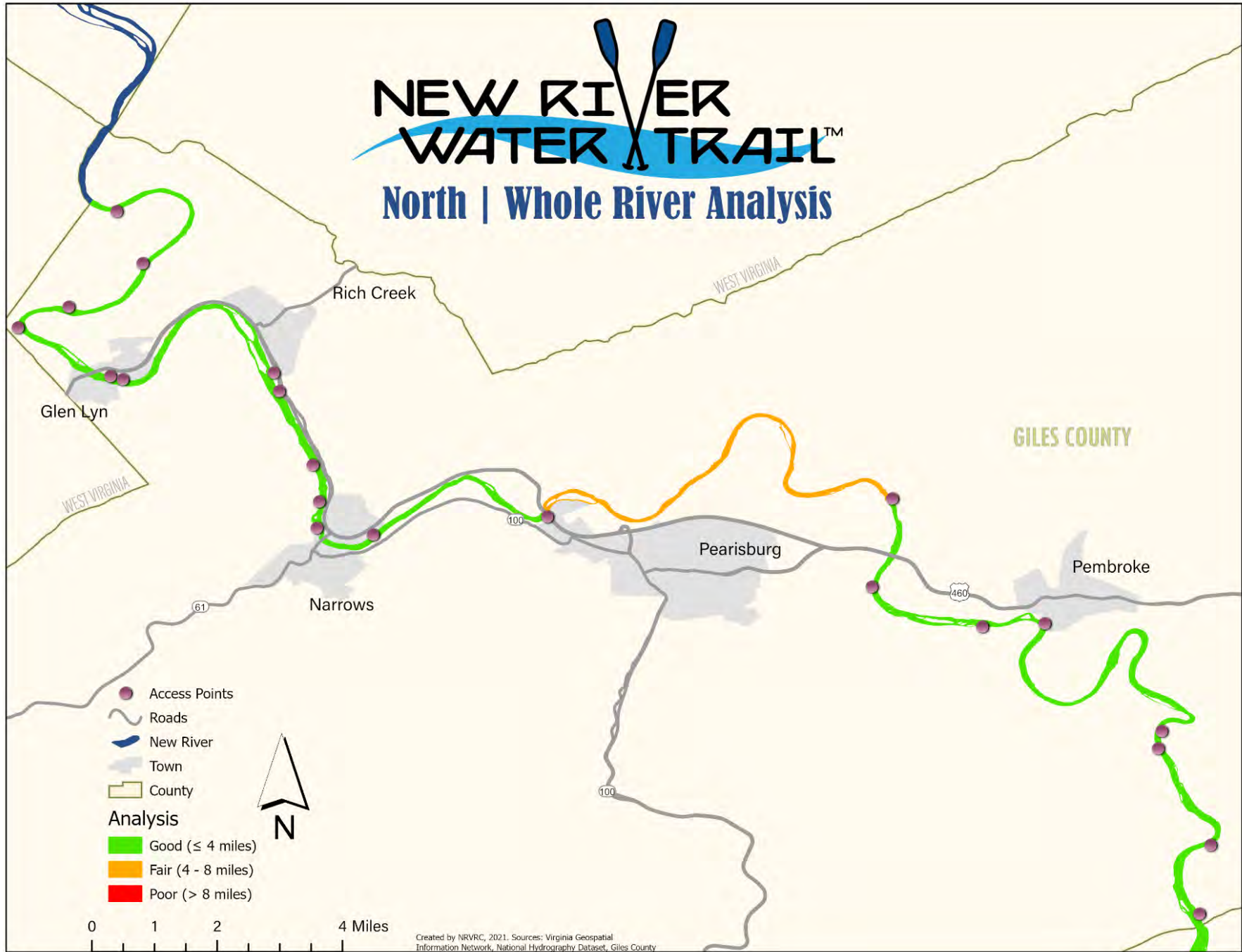


NEW RIVER WATER TRAIL™

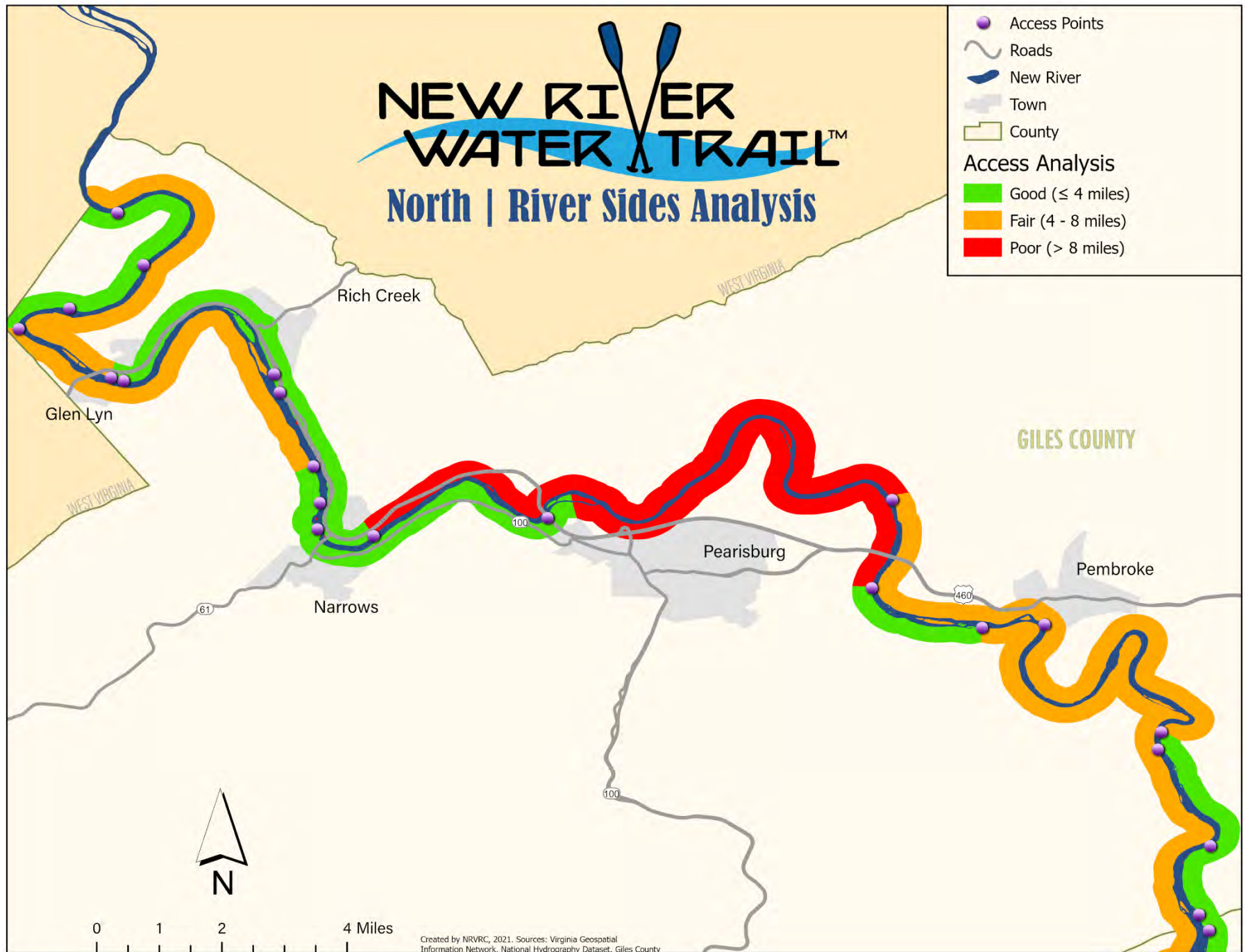
North | Access Points



This is the existing section of the NRWT. Note: Please see legend spreadsheet. Appendix A.



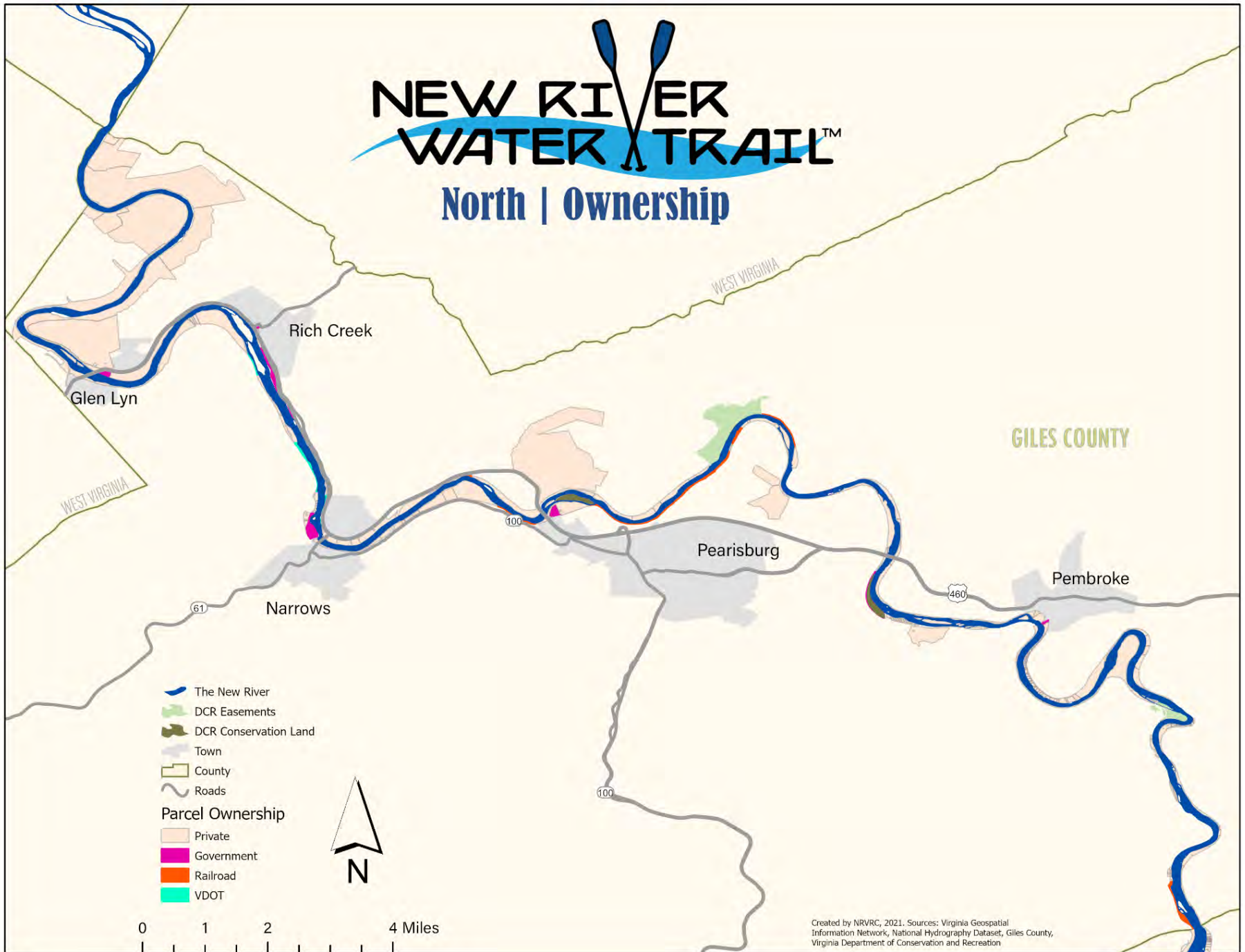
Note: Please see legend spreadsheet. Appendix A.



Note: Please see legend spreadsheet. Appendix A.

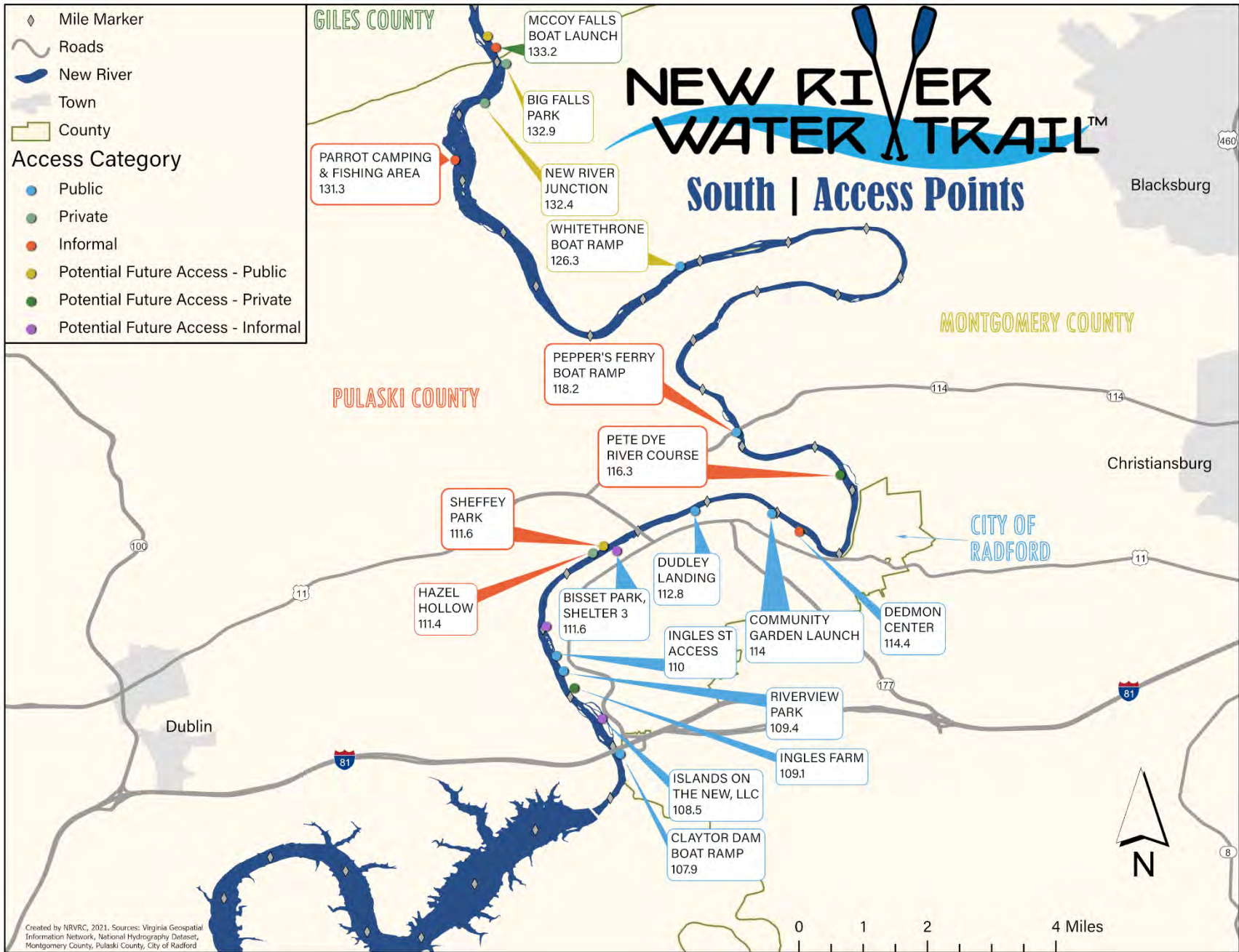
NEW RIVER WATER TRAIL™

North | Ownership

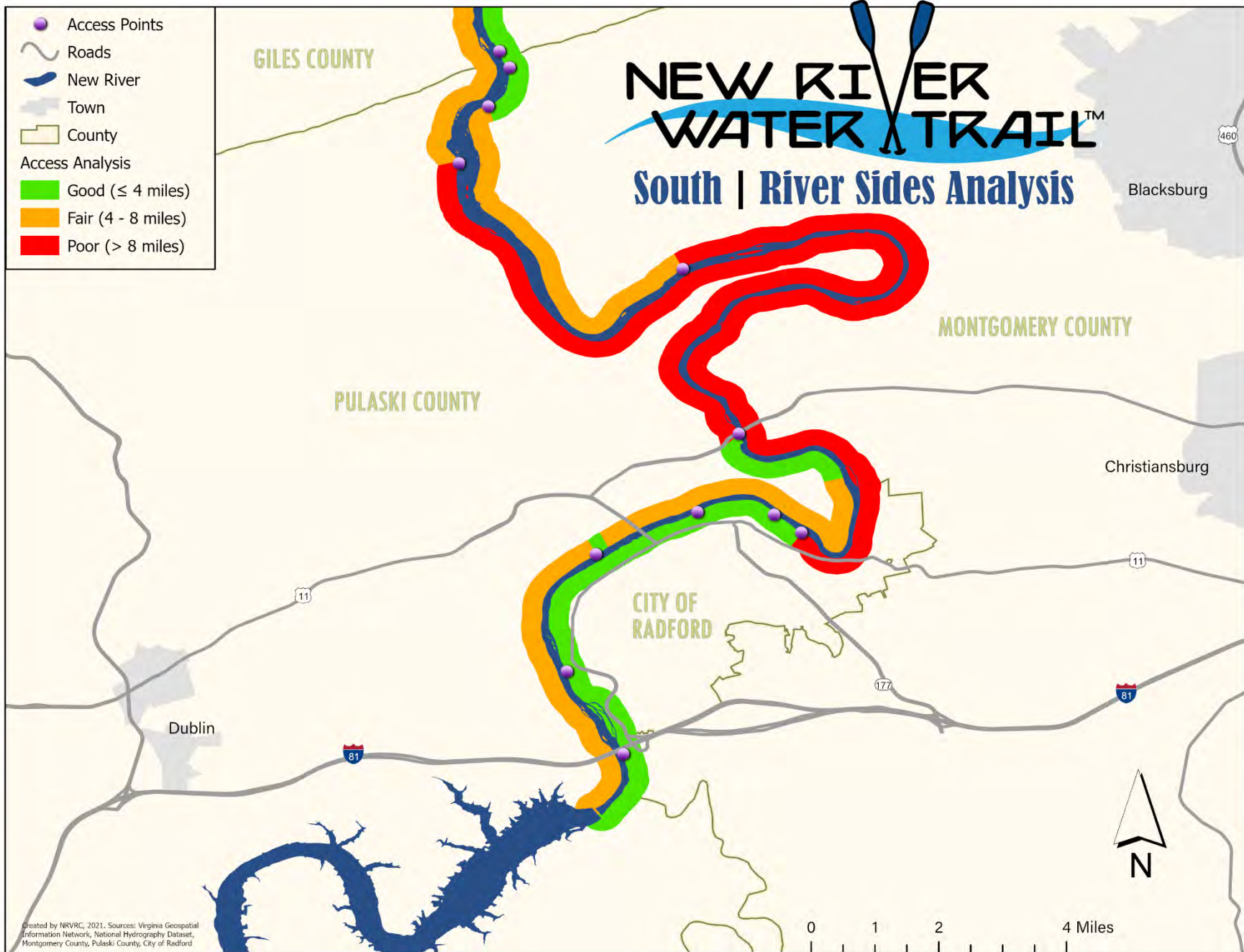


Created by NRVRC, 2021. Sources: Virginia Geospatial Information Network, National Hydrography Dataset, Giles County, Virginia Department of Conservation and Recreation

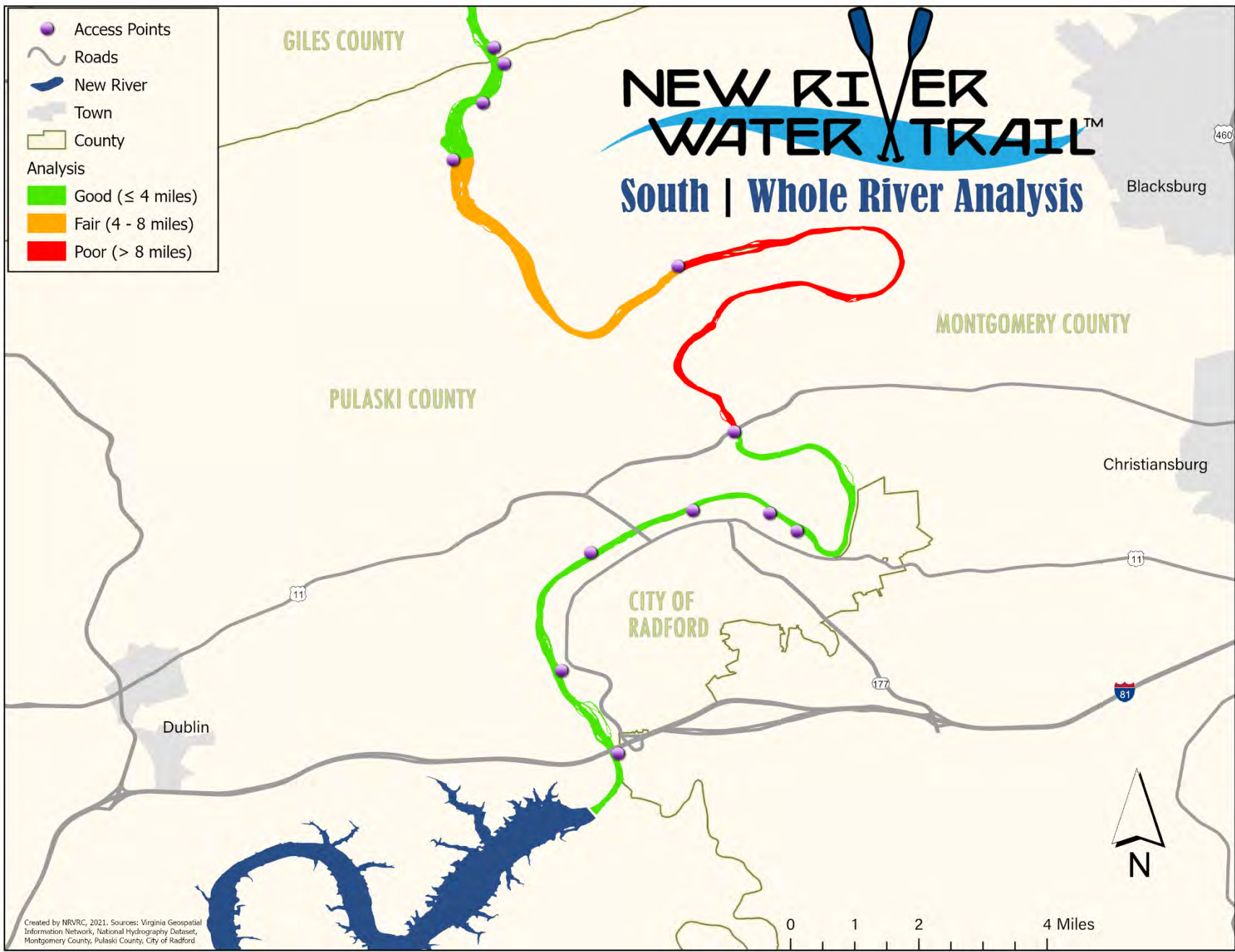
Note: Please see legend spreadsheet. Appendix A.



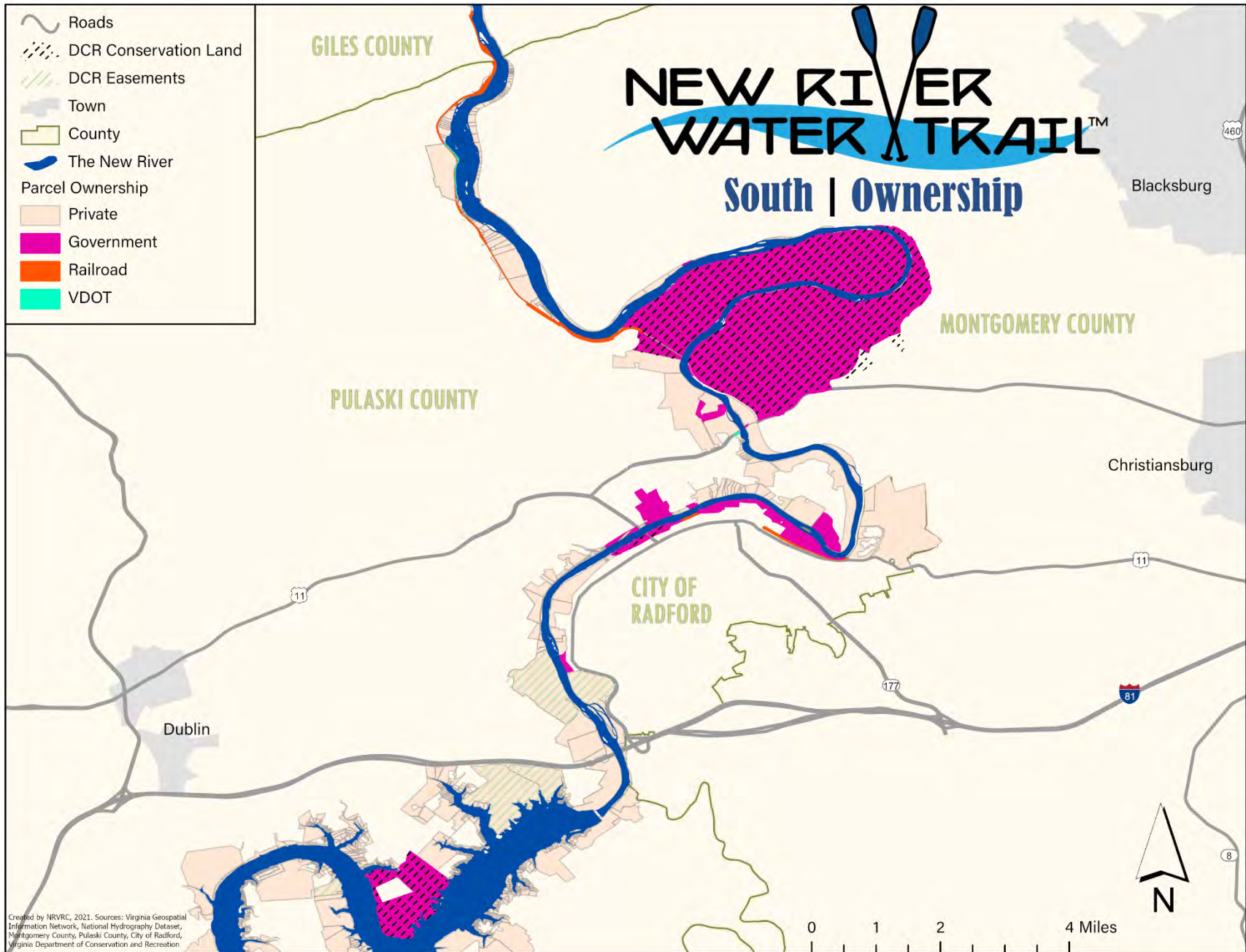
Note: Please see legend spreadsheet. Appendix A.



Note: Please see legend spreadsheet. Appendix A.



Note: Please see legend spreadsheet. Appendix A.



Note: Please see legend spreadsheet. Appendix A.

First Round Access Improvements by Locality: Please see PER upload, Boat Launch Cost Estimates for additional details.

1. *Pulaski County:* Sheffey Park in Pulaski County, is a 10-acre river-front parcel which was recently donated to the County. The County has been looking to develop the site for river access and over 2021 installed a five-mile trail connecting the future Sheffey Park to Smith Farm Park, a 100-acre parcel currently under development.
2. *City of Radford:* Bisset Park in the City of Radford, is a 57-acre river-front park near Radford University. It has two existing river access points towards the middle and lower ends of the park. Currently a river outfitter operates out of the upper end of the park. River users in this area do not have a formal access point available and use *desire lines* to access the river. This future access point is directly across from Sheffey Park.
3. *Montgomery County:* The Whitethorne launch in Montgomery County is the most heavily used river access point in the region, but also has significantly limited parking availability. The site investment will be to redesign the space to improve parking availability.
4. *Giles County:* McCoy Falls will become the southern-most river access in Giles County and the closest access point to Montgomery County--the population center of the region. A formal access point here will aid in overflow from Whitethorne. This area of the river currently has many desired access points which are very popular with students from Virginia Tech.



Pulaski County / Sheffey Park



City of Radford / Bisset Park



Montgomery County / Whitethorne



Giles County / McCoy Falls

2. Signage + Safety: Safety and signage are tied together in function. The New River has an anecdotal history of being a dangerous river. This is most likely due to the lack in popularity of life vests, knowledge of river safety, and the river being a place where people and industry disposed of waste. An important element of the expansion project is increasing user safety. The team will approach this in the following ways:

- a. Signage: Example images of signage is on the following page, along with a map which highlights where this signage would appear on the river.
 - i. Mile markers
 - ii. Bridge/Trestle Signage
 - iii. Warning/Safety Signs
 - iv. Ramp Signage (see Water Trail Marketing for more information on ramp signage)
- b. Life jacket loner program – potential sites are Bisset Park + Whitethorne.
- c. Water safety educational campaign/video
- d. River gauges
- e. Live stream cameras at boat launches

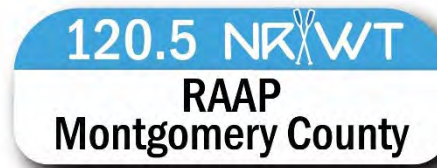
(A) Safety Gauge



(B) Safety Sign



(C) Bridge Signage



(D) Bridge Signage



(E) Mile Marker (large mount)

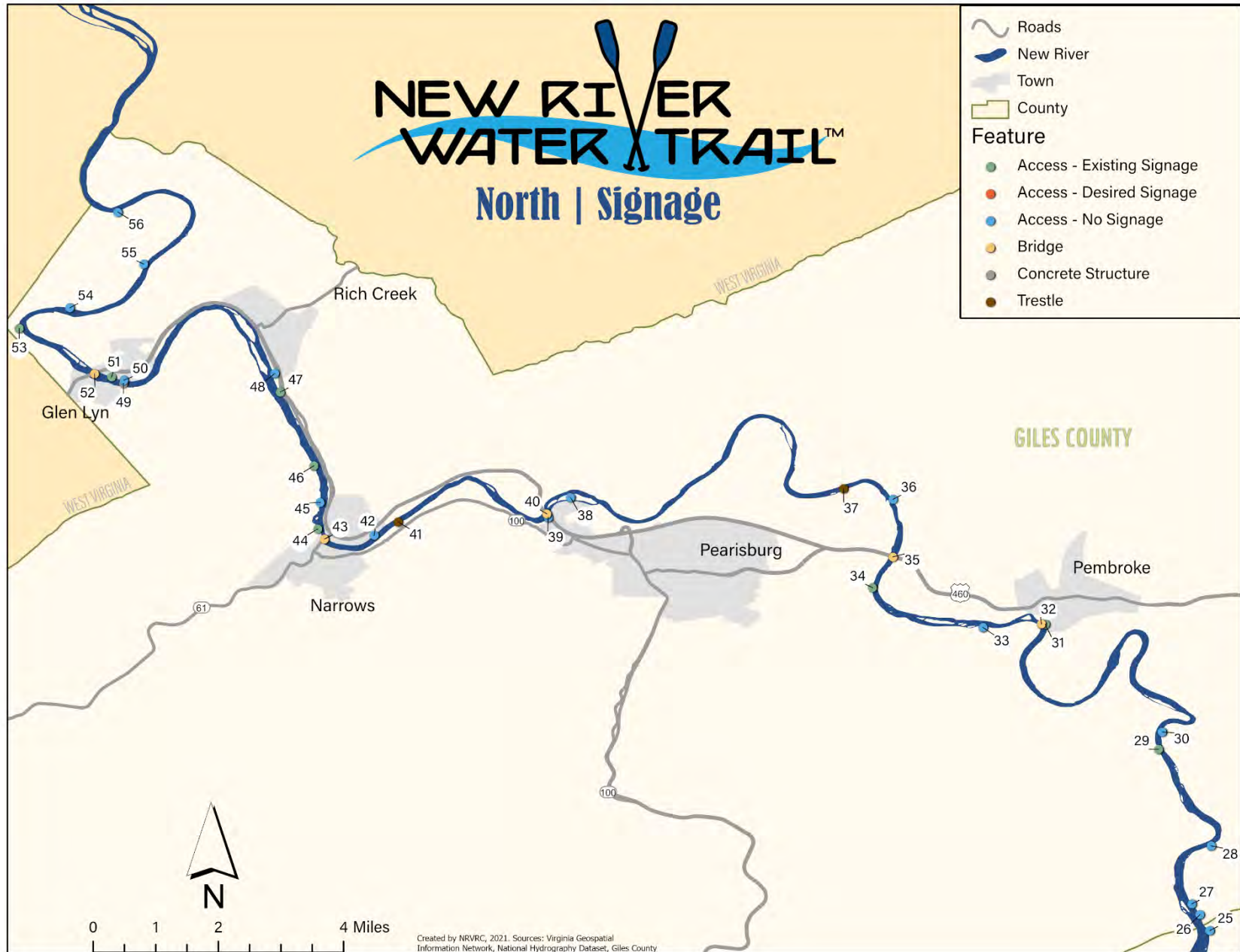


(E) Mile Marker (small mount)





Note: Please see legend spreadsheet. Appendix A.



Note: Please see legend spreadsheet. Appendix A.

3. Marketing: Giles County led the way in marketing the New River as the New River Water Trail. Their efforts include brand development, a website, maps and ramp signage. Alisa Moody of Wild Country Studios has worked on the New River Water Trail since its advent and will continue working with the Expansion Project Team.

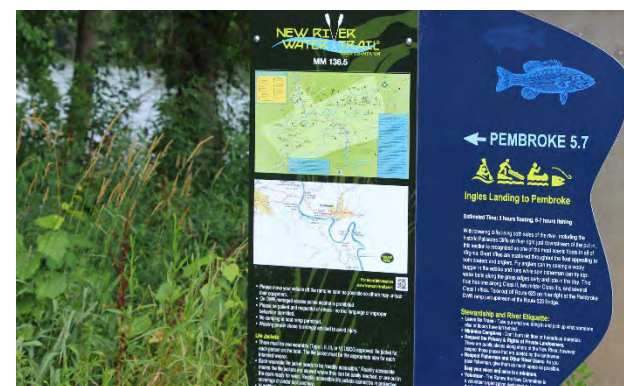
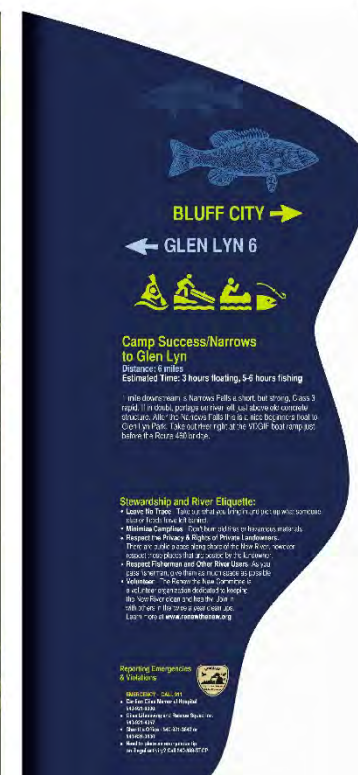
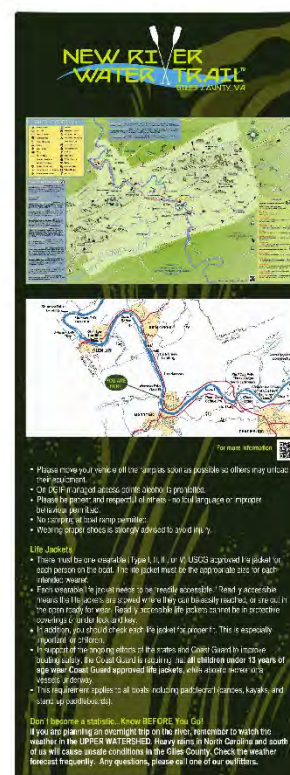
Ramp signage will be modified for the expansion and will reflect locality-specific information, but the aesthetic will stay the same. Additionally, the logo will be updated to include each of the participating localities.



22.75"

26.5"

60"



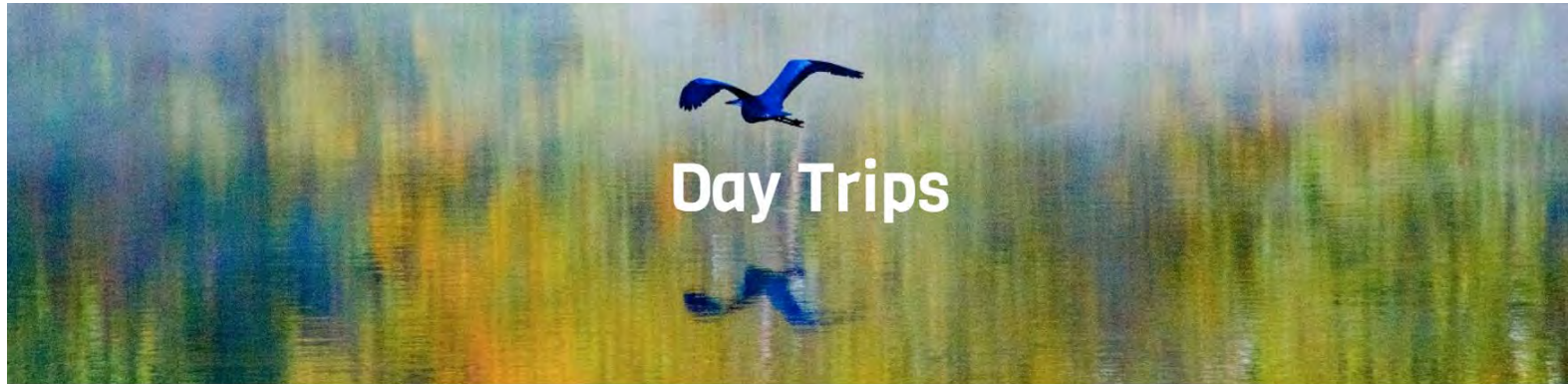
An existing sign at a Giles Launch.

Asset Maps: This marketing map will be updated to include the upstream localities, their river access points, along with their tourism assets. This map will be featured on the website as well as on the boat ramp launch signs.



Existing Giles County asset map.

Website: The New River Water Trail website can be found at www.newriverwatertrail.com. The intention is to expand this website from a Giles County website to a regional website. Website updates will include an updated day trips section which will highlight day trips around the region. Within this section the team will also create downloadable day trip paddle maps, which can be used on the water for navigation and will connect river users will local businesses, lodging, restaurants, events and other tourism activities.



McCoy to Eggleston Springs

Distance: 3 miles
Estimated Float Time: 1.5 hours
Estimated Fishing Time: 2-4 hours

This stretch makes for a great half-day float or continue down to Pembroke for a longer jaunt. This float has one strong Class II and several Class I riffles.

WARNING: Big Falls marks the beginning of this section and is a Class III-IV rapid which should be carefully scouted and run by highly experienced boaters only. An



Ingles Landing at Eggleston to Pembroke

Distance: 6 miles
Estimated Float Time: 3 hours
Estimated Fishing Time: 6-7 hours

With towering cliffs lining both sides of the river, including the historic Palisades Cliffs on river right just downstream of the put in, this section is recognized as one of the most scenic floats in all of Virginia. Short riffles are scattered throughout the float appealing to both boaters and anglers. Fly anglers can try casting a wooly bugger in the eddies and runs while spin



Pembroke to Ripplemead

Distance: 2.5 miles
Estimated Float Time: 1 hour
Estimated Fishing Time: 2-4 hours

A short but beautiful float characterized by numerous islands and riffles throughout, this section is a great run for a quick afternoon or morning float. It can also be added to the sections before or after it to lengthen the trip. One of the largest tributaries of the New, Walker Creek, enters on river left near the end of the float signaling the beginning of Whitt Riverbend Park. This

The existing website currently features Giles County daytrips.

4. Stewardship. Regional river stewardship is largely held within the work of the New River Watershed Roundtable. Since 2016, the New River Valley Regional Commission has been hosting local and state government representatives, businesses, university educators, student groups, advocacy groups, and the public in conversations about the watershed. This group collaborates on the ReNew the New the annual regional river cleanup, which since 2016 has involved almost 3,000 people in removing 21 tons and 1,000+ tires from the New River. The efforts of this group are expanding to include regional outreach to school aged children. This program, Litter Quitter, has a mascot, the Litter Quitter Critter. Wild Country Studios has been working in collaboration with the region to develop graphics and outreach materials. This program idea has received regionwide support and will be developed in conjunction with the NRWT over the coming years.



The annual ReNew the New cleanup attracts hundreds of participants to the river every year.

- 5. Technical Assistance:** In 2022, the NRVRC applied for the National Park Service, Rivers, Trails, and Conservation Assistance Program (NPS-RTCA). On May 5, 2022, the NRVRC received confirmation of a successful application to the program. NPS-RTCA will provide personnel to support the following technical assistance elements of on-going New River Water Trail Expansion Project:
- a. Assist in creation of a sustainable Organization Development Plan. What are the on-going costs, liability, etc. and where should it be hosted? How is revenue generated? Who does the on-going work? The goal is to secure consensus and be ready to implement a system towards the end of the process.
 - b. Assist in Development of a Public/Private Partnership Program to aid in connection to key stakeholders. There are over 25 potential private partners directly on river with hundreds more across the region. What is the framework and how do Public/Private Partnerships support the organization?
 - c. Assist with Gap Analysis and creation of a Strategic Plan to Increase Access. Using existing access maps to determine potential at the site scale.
 - d. Assist in planning and execution of at least one public engagement event- a community float in partnership with Montgomery County Parks and Recreation and DWR.



Appendix A:

ID	Name	Mile Marker	Access Category	Owner	Mileage Next Access	Next Public Access	County	Public	Type
1	CLAYTOR DAM BOAT RAMP	107.9	Public	DCR	0.6	1.5	Montgomery	Public	Formal
2	INTERSTATE 81 BRIDGE	107.9	NA	VDOT	0.6	1.5	Pulaski	NA	NA
3	ISLANDS ON THE NEW, LLC	108.5	Informal	ISLANDS ON THE NEW, LLC	0.6	0.9	Radford	Private	Informal
4	INGLES FARM	109.1	Private	JEFFRIES, LEWIS I	0.3	0.3	Radford	Private	NA
5	RIVERVIEW PARK	109.4	Public	DWR/ CITY OF RADFORD	0.2	2.2	Radford	Public	Formal
6	RADFORD WATER TREATMENT PLANT	109.6	Public	CITY OF RADFORD	0.4	0.4	Radford	Public	NA
7	INGLES ST ACCESS	110	Informal	CITY OF RADFORD	1.4	1.6	Radford	Public	Informal
8	HAZEL HOLLOW	111.4	Private	COX MICHAEL JUNIOR	0.2	0.2	Pulaski	Private	Formal
9	RADFORD TRESTLE	111.5	NA	Pulaski County	0.1	0.1	Pulaski	NA	NA
10	BISSET PARK, SHELTER 3	111.6	Informal	City of Radford	1.2	1.2	Radford	Public	Informal
11	SHEFFEY PARK	111.6	Public	EDA	1.2	1.2	Pulaski	Public	Future
12	ROUTE 11 BRIDGE	112	NA	VDOT	0.8	0.8	Pulaski	NA	NA
13	DUDLEY'S LANDING	112.8	Public	City of Radford	1.2	1.2	Radford	Public	Formal
14	COMMUNITY GARDEN LAUNCH	114	Public	City of Radford	0.4	0.4	Radford	Public	Formal
15	DEDMON CENTER	114.4	Informal	RADFORD COLLEGE	3.8	3.8	Radford	Public	Informal
16	PETE DYE RIVER COURSE	116.3	Private	RIVER COURSE L L C THE	1.9	2.9	Pulaski	Private	Informal
17	PEPPER'S FERRY BRIDGE	118.2	NA	VDOT	8.1	8.1	Pulaski	NA	NA
18	PEPPER'S FERRY BOAT RAMP	118.2	Public	DWR	8.1	8.1	Pulaski	Public	Formal
19	RADFORD ARSENAL TRESTLE 1	119.6	NA	RAAP	6.6	6.6	Montgomery	NA	NA
20	RADFORD ARSENAL STEAM PIPE	120.5	NA	RAAP	5.8	5.8	Montgomery	NA	NA
21	RADFORD ARSENAL BRIDGE	121.4	NA	RAAP	4.7	4.7	Montgomery	NA	NA
22	WHITETHORNE BOAT RAMP	126.3	Public	DCR	5	5	Montgomery	Public	Formal
23	PARROT CAMPING & FISHING AREA	131.3	Informal	AKERS W D & FLORA F	1.1	1.9	Pulaski	Public	Informal
24	NEW RIVER JUNCTION	132.4	Private	LENAHAN LLC,	0.8	0.8	Montgomery	Private	Formal
25	BIG FALLS PARK	132.9	Private	BIG FALLS PARK	0.3		Montgomery	Private	Formal
26	MCCOY FALLS BOAT LAUNCH	133.2	Informal	NA	1.4	0.1	Giles	Private	Informal
27	NEW GILES LAUNCH	133.4	Public		1.2	3.2	Giles	Public	Formal
28	NEW RIVER PARK CAMPGROUND	134.6	Private	D & R PROPERTIES LLC	1.9	1.9	Giles	Private	Formal
29	EGGLESTON BOAT RAMP	136.5	Public	VDOT	0.2	0.4	Giles	Public	Formal



ID	Name	Mile Marker	Lat	Long	Feature	Materiality	Bathroom	Ramp Signage
1	CLAYTOR DAM BOAT RAMP	107.9	37.088606	-80.578864	Access	Concrete	No	Yes
2	INTERSTATE 81 BRIDGE	107.9	37.08959041	-80.5801167	Bridge		NA	
3	ISLANDS ON THE NEW, LLC	108.5	37.096598	-80.582934	Potential Future Access	NA	No	NA
4	INGLES FARM	109.1	37.103503	-80.589219	Potential Future Access	NA	No	NA
5	RIVERVIEW PARK	109.4	37.107304	-80.59162	Access	Concrete	No	No
6	RADFORD WATER TREATMENT PLANT	109.6	37.11076	-80.593252	Concrete Structure	NA	No	NA
7	INGLES ST ACCESS	110	37.117362	-80.595546	Potential Future Access	Desire	No	Maybe
8	HAZEL HOLLOW	111.4	37.133866	-80.585053	Access	Concrete	No	No
9	RADFORD TRESTLE	111.5	37.13410229	-80.58276427	Trestle			
10	BISSET PARK, SHELTER 3	111.6	37.134368	-80.579647	Potential Future Access	Desire	No	No
11	SHEFFEY PARK	111.6	37.135448	-80.582634	Potential Future Access	Concrete	No	Yes
12	ROUTE 11 BRIDGE	112	37.13890829	-80.57458027	Bridge			
13	DUDLEY'S LANDING	112.8	37.143386	-80.562053	Access	Concrete	No	No
14	COMMUNITY GARDEN LAUNCH	114	37.142789	-80.544699	Access	Concrete	No	Yes
15	DEDMON CENTER	114.4	37.138735	-80.538547	Access	Sand	Yes	No
16	PETE DYE RIVER COURSE	116.3	37.151498	-80.529331	Potential Future Access	Desire	Yes	No
17	PEPPER'S FERRY BRIDGE	118.2	37.161125	-80.552701	Bridge			No
18	PEPPER'S FERRY BOAT RAMP	118.2	37.161125	-80.552701	Access	Sand	No	No
19	RADFORD ARSENAL TRESTLE 1	119.6	37.103831	-80.335423	Trestle			
20	RADFORD ARSENAL STEAM PIPE	120.5	37.111443	-80.332275	Trestle			
21	RADFORD ARSENAL BRIDGE	121.4	37.113882	-80.322889	Bridge			
22	WHITETHORNE BOAT RAMP	126.3	37.198432	-80.565396	Access	Concrete	No	Yes
23	PARROT CAMPING & FISHING AREA	131.3	37.222378	-80.616066	Access	Desire	No	NA
24	NEW RIVER JUNCTION	132.4	37.235243	-80.609392	Access	Concrete	No	No
25	BIG FALLS PARK	132.9	37.244038	-80.604596	Access			
26	MCCOY FALLS BOAT LAUNCH	133.2	37.24770991	-80.6069	Access	Gravel	No	No
27	NEW GILES LAUNCH	133.4	37.250219	-80.608755	Potential Future Access			
28	NEW RIVER PARK CAMPGROUND	134.6	37.263601	-80.604293	Access	Sand	Yes	No
29	EGGLESTON BOAT RAMP	136.5	37.28589408	-80.6164	Access	Concrete	No	Existing



ID	Name	Mile Marker	Access Category	Owner	Mileage Next Access	Next Public Access	County	Public	Type
30	EGGLESTON SPRINGS CAMPGROUND	136.7	Private	EGGLESTON SPRINGS, LLC	0.2	0.2	Giles	Private	Formal
31	PEMBROKE BOAT LANDING	142.2	Public	Town of Pembroke	0.8	2.4	Giles	Public	Formal
32	ROCKY HOLLOW ROAD BRIDGE	142.2	NA	VDOT	0.8	2.4	Giles	NA	NA
33	NEW RIVER'S EDGE	143	Private	MOODY PAUL E	1.6	1.6	Giles	Private	Formal
34	RIPPLEMEAD BOAT RAMP	144.6	Public	TOWN OF PEARISBURG	2.7	8.4	Giles	Public	Formal
35	RTE 460 RIPPLEMEAD BRIDGE	145.2	NA	VDOT	1.1	7.8	Giles	NA	NA
36	BUZZO FAMILY CAMPGROUND	146.3	Private	CGA ENTERPRISES INC	6.7	6.7	Giles	Private	Formal
37	RAILROAD TRESTLE RIPPLEMEAD	146.9	NA	Norfolk Southern Railway	6.1	6.1	Giles	NA	NA
38	PARIS ISLAND	152.5	Public	UNITED STATES OF AMERICA	0.5	0.5	Giles	Public	NA
39	HALE'S LANDING	153	Public	?	2.8	3.8	Giles	Public	Formal
40	460 Bridge at Celanese	153	NA	VDOT	2.8	3.8	Giles	NA	NA
41	NARROWS RAILWAY TRESTLE	155.4	NA	Norfolk Southern	0.4	1.4	Giles	NA	NA
42	RIVERVIEW CAMPGROUND	155.8	Private	HARMAN GLENN D & JOHN E	0.5	1	Giles	Private	Formal
43	MACARTHUR LN. BRIDGE	156.6	NA	VDOT	0.2	0.2	Giles	NA	NA
44	CAMP SUCCESS BOAT RAMP	156.8	Public	Town of Narrows	0.4	0.9	Giles	Public	Formal
45	LARRY'S LANDING CAMPGROUND	157.2	Private	WILLIBY DANIEL R	0.5	0.5	Giles	Private	Formal
46	LURICH ROAD BOAT LANDING	157.7	Public		1.3	1.3	Giles	Public	Formal
47	GENTRY'S LANDING BOAT RAMP	159	Public	Town of Rich Creek	0.3	3.7	Giles	Public	Formal
48	GENTRY'S LANDING CAMPGROUND	159.3	Private	Town of Rich Creek	3.4	3.4	Giles	Private	Formal
49	GLEN LYNRAIL ROAD PIERS	162.7	NA		0.1	0.1	Giles	NA	NA
50	GLEN LYN PARK ACCESS 1	162.7	Informal	US GOVT / MA FERGUSON	0.1	0.1	Giles	Public	Informal
51	GLEN LYN PARK ACCESS 2	162.8	Public	U.S. Government	1.5	1.5	Giles	Public	Formal
52	460 Glen Lyn / VIRGINIA AVE BRIDGE	163.1	NA	VDOT	2.2	2.2	Giles	NA	NA
53	SHUMATE FALLS RD	164.3	Informal	U.S. GOVT	0.7	0.7	Giles	Public	Informal
54	SHUMATE FALLS CANOE PORTAGE	165	Informal	USA TRACT 69 81/299	1.4	1.4	Giles	Public	Informal
55	SANDBAR BOAT RAMP	166.4	Informal	USA TRACT 69 81/299	2.3	2.3	Giles	Public	Informal
56	STATE LINE FALLS BOAT RAMP	168.7	Informal	USA TRACT 67 74/342			Giles	Public	Informal



ID	Name	Mile Marker	Lat	Long	Feature	Materiality	Bathroom	Ramp Signage
30	EGGLESTON SPRINGS CAMPGROUND	136.7	37.289898	-80.615598	Access	Concrete	Yes	No
31	PEMBROKE BOAT LANDING	142.2	37.31474264	-80.6426	Access	Concrete	No	Existing
32	ROCKY HOLLOW ROAD BRIDGE	142.2	37.31479843	-80.6435	Bridge	NA	No	NA
33	NEW RIVER'S EDGE	143	37.31402	-80.657	Access	Sand	Yes	No
34	RIPPLEMEAD BOAT RAMP	144.6	37.32320669	-80.6825	Access	Concrete	Yes	Existing
35	RTE 460 RIPPLEMEAD BRIDGE	145.2	37.33029059	-80.6778	Bridge	NA	No	NA
36	BUZZO FAMILY CAMPGROUND	146.3	37.343581	-80.677792	Access	Desire	Yes	NA
37	RAILROAD TRESTLE RIPPLEMEAD	146.9	37.34605485	-80.6892	Trestle	NA	No	NA
38	PARIS ISLAND	152.5	37.344015	-80.752249	Potential Future Access	NA	No	NA
39	HALE'S LANDING	153	37.33939352	-80.7574	Access	Gravel ?	No	No
40	460 Bridge at Celanese	153	37.34023437	-80.7577	Bridge	NA	No	NA
41	NARROWS RAILWAY TRESTLE	155.4	37.33837	-80.7921	Trestle	NA	No	NA
42	RIVERVIEW CAMPGROUND	155.8	37.335233	-80.797615	Access	Concrete	Yes	No
43	MACARTHUR LN. BRIDGE	156.6	37.33441893	-80.8091	Bridge	NA	No	NA
44	CAMP SUCCESS BOAT RAMP	156.8	37.33679777	-80.8106	Access	Concrete	Yes?	Existing
45	LARRY'S LANDING CAMPGROUND	157.2	37.342886	-80.810057	Access	Concrete	Yes	No
46	LURICH ROAD BOAT LANDING	157.7	37.351339	-80.811527	Access		No	Existing
47	GENTRYS LANDING BOAT RAMP	159	37.36835189	-80.8193	Access	Concrete	No	Existing
48	GENTRY'S LANDING CAMPGROUND	159.3	37.372628	-80.820574	Access	Concrete?	Yes	No
49	GLEN LYNRAIL ROAD PIERS	162.7	37.37039804	-80.8555	Concrete Structure	NA	No	NA
50	GLEN LYN PARK ACCESS 1	162.7	37.37108646	-80.8554	Access	Gravel?	Yes	NA
51	GLEN LYN PARK ACCESS 2	162.8	37.371831	-80.858272	Access	Concrete	Yes	Existing
52	460 Glen Lyn / VIRGINIA AVE BRIDGE	163.1	37.37257651	-80.8622	Bridge	NA	NA	NA
53	SHUMATE FALLS RD	164.3	37.38306504	-80.8796	Access	Concrete?	No	Existing
54	SHUMATE FALLS CANOE PORTAGE	165	37.38781848	-80.8679	Access	Concrete?	No	NA
55	SANDBAR BOAT RAMP	166.4	37.39787335	-80.8508	Access	Sand	No	No
56	STATE LINE FALLS BOAT RAMP	168.7	37.40989508	-80.8568	Access	Sand	No	No

