

# Quality of Life

## Housing

A wide variety of housing is available for New River Valley residents. According to the 2007-2011 American Community Survey 5-Year Estimates, 55% of all housing units in the area were owner occupied. General housing characteristics are shown in Table 58.

**Table 58**  
**2007-2011 General Housing Characteristics**

CHARACTERISTIC	FLOYD COUNTY	GILES COUNTY	MONTGOMERY COUNTY	PULASKI COUNTY	CITY OF RADFORD
Total Housing Units	7,725	8,297	38,057	17,205	6,422
Occupied Housing Units	6,148	7,054	34,591	14,884	5,644
Owner	4,757	5,494	19,042	10,798	2,744
Renter	1,391	1,560	15,549	4,086	2,900
Median Value Owner	\$147,900	\$98,800	\$196,300	\$127,600	\$152,200
Median Value Renter	\$554	\$553	\$771	\$570	\$638
Vacancy Rate					
Owner	2.2%	2.0%	1.5%	1.0%	2.8%
Renter	13.8%	7.8%	2.8%	6.1%	2.5%

Source: U.S. Census Bureau, 2007-2011 American Community Survey 5-Year Estimates.

The average household size in the New River Valley remained steady from 2000 to 2007-2011. The number of occupied housing units increased from 2000 to 2007-2011 (9,602), as shown in Table 59.

**Table 59**  
**Average Household Size**

JURISDICTION	PERSONS IN OCCUPIED HOUSING UNITS				OCCUPIED HOUSING UNITS				INDIVIDUALS/UNITS			
	1980	1990	2000	2011	1980	1990	2000	2011	1980	1990	2000	2011
Floyd County	11,563	11,938	13,819	15,087	4,915	4,763	5,791	6,148	2.35	2.51	2.39	2.45
Giles County	17,810	16,246	16,562	17,029	6,733	6,461	6,994	7,054	2.65	2.51	2.37	2.41
Montgomery County	63,244	65,189	74,469	82,416	22,386	26,241	30,997	34,591	2.83	2.48	2.40	2.38
Pulaski County	35,299	33,526	34,015	33,934	13,736	13,349	14,643	14,884	2.57	2.51	2.32	2.28
City of Radford	13,497	12,922	13,046	13,047	4,162	5,207	5,809	5,644	3.24	2.48	2.25	2.31
New River Valley	141,413	139,821	151,911	161,513	51,932	56,021	64,234	68,321	2.72	2.50	2.36	2.36

Source: U.S. Census Bureau and U.S. Census Bureau, 2007-2011 American Community Survey 5-Year Estimates.

Table 60 shows 2007-2011 occupancy and structural characteristics of housing for the New River Valley.

**Table 60**  
**2007-2011 Occupancy and Structural Characteristics**

<b>UNITS</b>	<b>FLOYD COUNTY</b>	<b>GILES COUNTY</b>	<b>MONTGOMERY COUNTY</b>	<b>PULASKI COUNTY</b>	<b>CITY OF RADFORD</b>	<b>NRV</b>
Owner-occupied housing	4,757	5,494	19,042	10,798	2,744	42,835
1, detached	4,022	4,681	15,002	9,123	2,556	35,384
1, attached	11	63	1,583	212	83	1,952
2 or more, attached	12	0	279	0	10	301
Mobile home	712	750	2,178	1,456	95	5,191
Boat, RV, van, etc.	0	0	0	7	0	7
Renter-occupied housing	1,391	1,560	15,549	4,086	2,900	25,486
1, detached	664	807	2,875	1,500	548	6,394
1, attached	0	0	2,087	91	163	2,341
2 or more, attached	209	429	9,231	1,951	2,127	13,947
Mobile home	518	324	1,305	544	62	2,753
Boat, RV, van, etc.	0	0	51	0	0	51

Source: U.S. Census Bureau, 2007-2011 American Community Survey 5-Year Estimates.

### **Health Care**

The New River Valley has excellent health care facilities. There are approximately 250 physicians and 100 dentists practicing in the Valley and there are four general hospitals in the region providing a total of 328 beds. In addition, Carilion Saint Albans Behavioral Health provides 36 special care beds. Most of the hospitals have helicopter service from Roanoke Memorial Hospital for emergency cases. In addition to hospital services, numerous health department and out-patient clinics are available.

### **Hospital Corporation of America Health Care Centers**

#### LewisGale Hospital - Montgomery

LewisGale Hospital - Montgomery, located on Route 460 between Christiansburg and Blacksburg, is a 103 bed, full-service hospital. More than 170 physicians represent specialties that range from obstetrics to ophthalmology and from neurology to urology.

Since its opening in 1971, LewisGale - Montgomery has been expanding its services and equipment to meet the growing health care needs of the community. It currently offers several special services such as cardiac services and cardiac rehabilitation; as well as an outpatient center in Christiansburg. The Emergency Department is a 16-bed, Level III Trauma Center with all of the RNs certified in Advanced Life Saving Courses (ACLS, TNN, PALS, CEN). The hospital also offers a Birthing Center/Maternity Service that provides the latest in Family Centered Maternity Care with eight rooms equipped for Labor, Delivery, Recovery, and Post-Partum (LDRP). Other special services include a Lactation Center, Health Education Center, nutrition services, outpatient services, physical therapy and sports medicine, and therapeutic services.

## LewisGale Hospital - Pulaski

LewisGale Hospital - Pulaski is a 54 bed, acute care facility that provides extensive services to residents of Virginia's New River Valley. They are accredited by the Joint Commission for Healthcare Organizations (JCAHO) and meet ISO 9002 standards -- the first hospital in the U.S. ever to earn both distinctions.

Located at LewisGale - Pulaski, the New River Valley Cancer Care Center (NRVCCC) is dedicated to providing technologically advanced treatment to the patients of Southwestern Virginia. The center provides a complete range of treatment options on an inpatient or outpatient basis, including radiation therapy, chemotherapy, and surgery. Other services of the center include patient/family support groups and screenings for the public. This hospital also offers surgical, pediatric, emergency and outpatient services. As an affiliate of Columbia/HCA, in Nashville Tennessee, LewisGale - Pulaski has the advantages of the financial, technical, and professional resources that only a corporation like Columbia/HCA can provide. At the same time, it has the best features of smaller hospitals where patients receive personalized treatment and concerned care.

## **Carilion Health Care Centers**

### Carilion Giles Community Hospital

Carilion Giles Community Hospital (CGCH), located in Pearisburg, Virginia, opened its new facility in May of 2010. It has 25 beds and provides a variety of programs and services to ensure the quality of life in this serene setting. It provides state-of-the art inpatient, outpatient, emergency and home healthcare. In 1988, the facility became a full affiliate of Carilion Health System, bringing southwest Virginians into the not-for-profit healthcare leader's network of top-rated medical personnel, leading-edge technology, health education and information. Comprehensive inpatient care, advanced cardiac testing, and sophisticated outpatient surgery are also offered.

### Carilion New River Valley Medical Center

Located near Radford off I-81, Exit 109, Carilion New River Valley (CNRV) Medical Center serves a growing region, including the counties of Montgomery, Pulaski, Floyd, Giles, Wythe, Bland and Carroll, as well as the City of Radford. The 146 bed facility offers comprehensive healthcare services and more than 25 specialties. Services offered at CNRV include cardiac care, cardiopulmonary rehabilitation, child day care, community pharmacy and medical supply, a level III Trauma Center, rehabilitation, respiratory therapy, senior services, home care services, nutritional counseling, occupational medicine, pediatrics, radiology, a sleep center, vascular services, and two wellness/fitness centers.

### Carilion Clinic St. Albans Hospital

Carilion Clinic St. Albans Hospital is a 36 bed inpatient treatment center. It is located at the CNRV and offers confidential and comprehensive psychiatric treatment and chemical dependency programs to patients from the New River Valley to far southwest Virginia.

Carilion Hospice Services of the New River Valley

Carilion Hospice Services of the New River Valley (CHS) is an organization that provides medical, psycho-social and spiritual care and other support services to people with a life limiting, progressive illness and to his or her family. Hospice affirms life by providing the care and support necessary to enhance the quality of life remaining for the patient. Hospice care is palliative. The aim is to manage pain and other symptoms so that patients remain comfortable and at an optimum level of functioning, preferably in their own homes. In addition, CHS offers speakers and other educational programming to family, friends and the public.

CHS serves the counties of Craig, Floyd, Giles, Montgomery, and Pulaski, and the City of Radford. Hospice services are available 24 hours per day, seven days a week, and are provided regardless of ability to pay. Some services may be reimbursed through Medicare, Medicaid, or private insurance. United Way funding and tax-deductible contributions help pay for non-covered services. CHS utilizes volunteers in many capacities including home care, bereavement counseling, and office work. Training sessions are held in the various service areas.

Table 62 lists hospitals in the New River Valley and Figure 28 illustrates the location of these hospitals. A variety of nursing homes also operate in the New River Valley; they are listed in Table 63.

**Table 61**  
**Hospitals in the New River Valley**

HOSPITALS	LOCATION	TOTAL BEDS	ADMISSIONS	PERSONNEL
Carilion Giles Community	Giles	25	1,185	175
Carilion New River Valley Medical Center	Montgomery	146	7,837	807
LewisGale Hospital - Montgomery	Montgomery	103	4,103	403
LewisGale Hospital - Pulaski	Pulaski	54	2,542	338

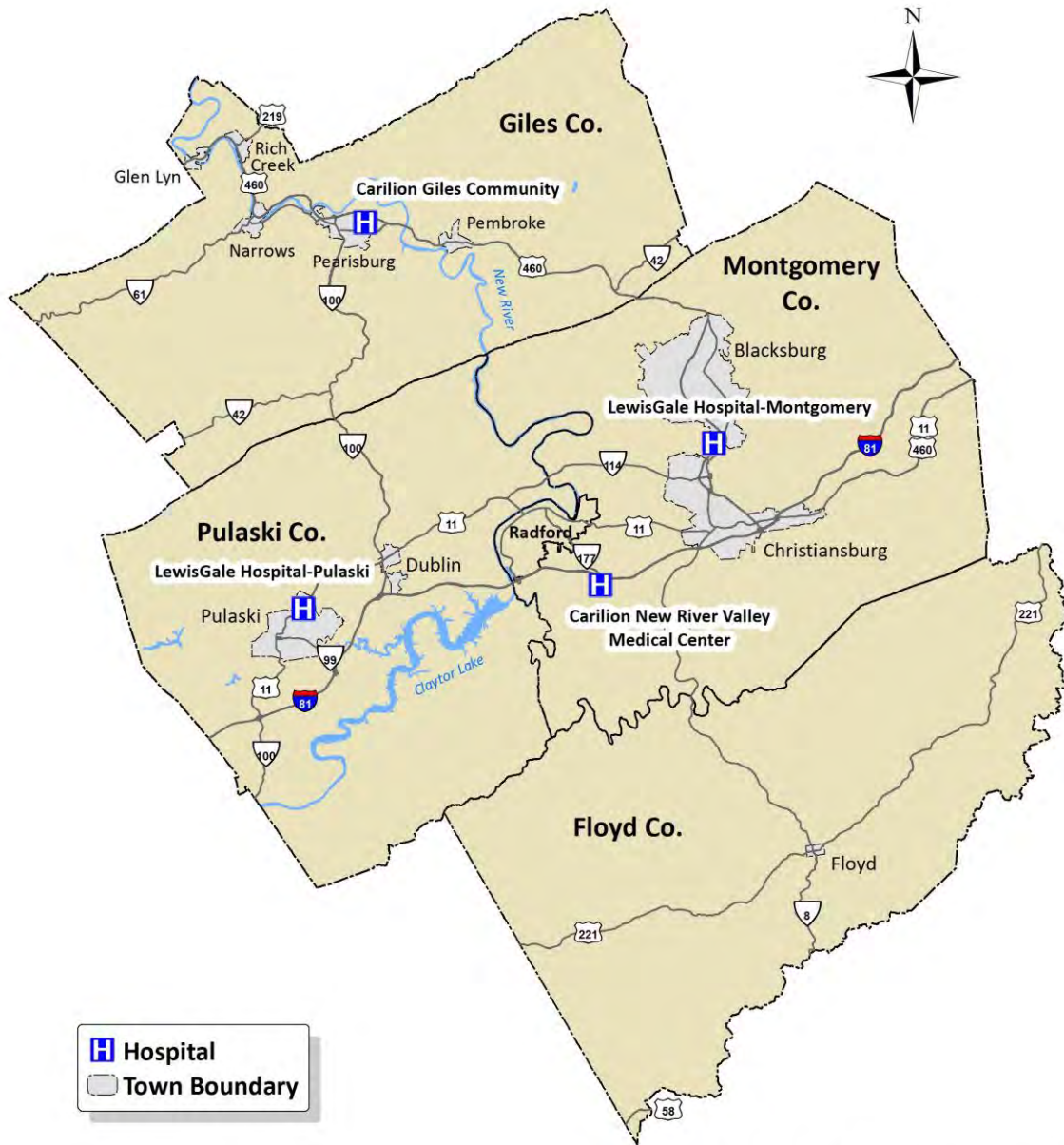
Source: Health Forum LLC, an affiliate of the American Hospital Association, 2013.

**Table 62**  
**Nursing Homes in the New River Valley**

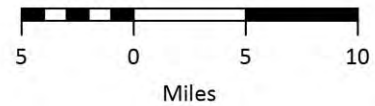
NURSING HOMES	LOCATION	# BEDS
Kroontje Health Care Center	Montgomery	60
Heritage Hall-Blacksburg	Montgomery	194
Highland Ridge Rehabilitation Center	Pulaski	132
Pulaski Health & Rehabilitation Center	Pulaski	90
Radford Health & Rehabilitation Center	Radford	90
Riverview Nursing Home	Giles	120
Skyline Nursing and Rehabilitation Center	Floyd	90

Source: U.S. News & World Report, 2013 ([www.health.usnews.com/best-nursing-homes](http://www.health.usnews.com/best-nursing-homes)).

**Figure 28**  
**Hospitals in the New River Valley**



Map created by the NRPDC, 2013. Sources:  
 US Census Bureau and VGIN.



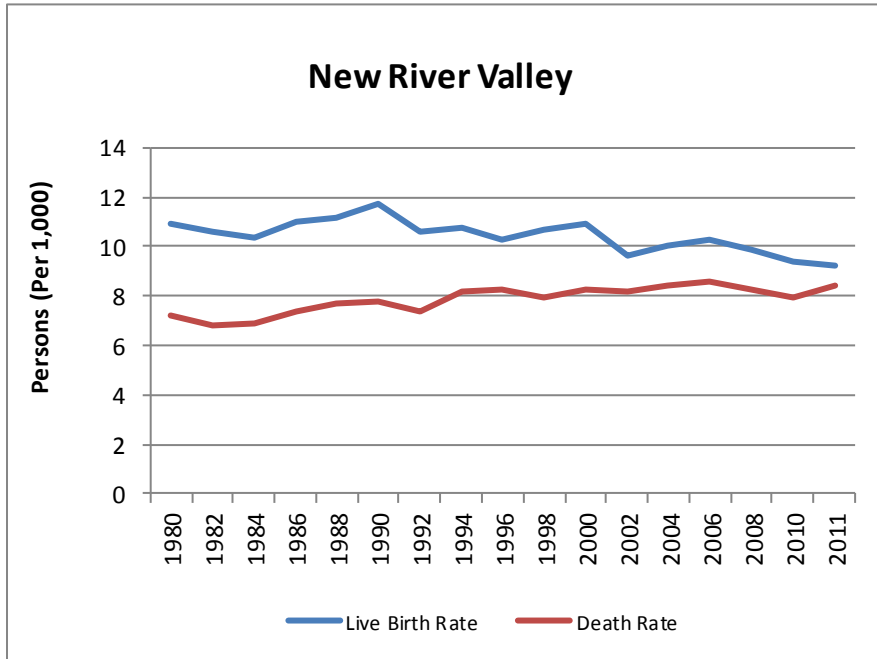
The Virginia Center for Health Statistics collects and disseminates all vital records data, conducts research and produces reports which help guide policy issues affecting the Commonwealth. Data is collected via vital records through the use of surveys, and by partnerships with other public and private entities such as the U.S. Census Bureau. Table 64 and Figures 29 and 30 present the live birth and death rates for the region and the State.

**Table 63**  
**Birth and Death Rates Per 1,000 Persons**

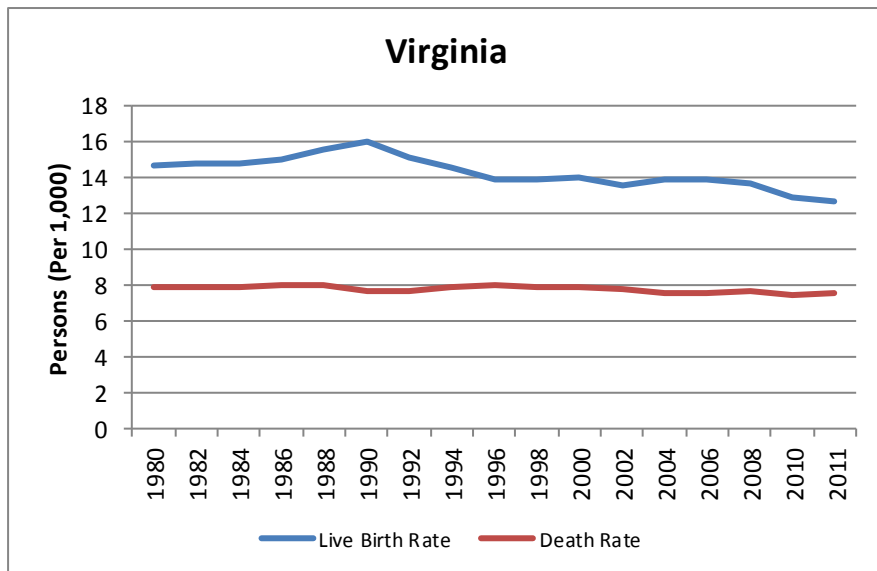
YEAR	NEW RIVER VALLEY		VIRGINIA	
	LIVE BIRTH RATE	DEATH RATE	LIVE BIRTH RATE	DEATH RATE
1980	10.9	7.2	14.7	7.9
1982	10.6	6.8	14.8	7.9
1984	10.4	6.9	14.8	7.9
1986	11.0	7.4	15.0	8.0
1988	11.2	7.7	15.6	8.0
1990	11.7	7.8	16.0	7.7
1992	10.6	7.4	15.1	7.7
1994	10.8	8.2	14.6	7.9
1996	10.3	8.3	13.9	8.0
1998	10.7	7.9	13.9	7.9
2000	10.9	8.3	14.0	7.9
2002	9.6	8.2	13.6	7.8
2004	10.0	8.4	13.9	7.5
2006	10.3	8.6	13.9	7.5
2008	9.9	8.3	13.7	7.6
2010	9.4	7.9	12.9	7.4
2011	9.2	8.4	12.7	7.5

Sources: Virginia Vital Statistics: Center for Health Statistics, Virginia Department of Health, 1980 - 1994.  
 Virginia Health Statistics 1995: Center for Health Statistics, Virginia Department of Health, 1997.  
 Virginia Health Statistics 1996: Center for Health Statistics, Virginia Department of Health, 1998.  
 Virginia Health Statistics 1998, Volume I: Center for Health Statistics, Virginia Department of Health, 2000.  
 Virginia Center for Health Statistics, Virginia Department of Health, 2004, 2006, 2008, 2010, 2011.

**Figure 29**  
**New River Valley Birth and Death Rates**



**Figure 30**  
**Virginia Birth and Death Rates**



## ***Recreational Opportunities***

Home to the Nation's oldest river, the New River Valley offers many historical and cultural attractions, recreational activities, parks, music, arts, festivals, sporting events, and more. The region has a rich historical heritage and features vibrant local communities that are surrounded by scenic vistas. Whether you're looking for a quiet drive along the Blue Ridge Parkway, hoping to catch a trophy smallmouth bass on the New River, starting your trek along the Appalachian Trail (AT), exploring US Bike Route 76, enjoying the sun at Claytor Lake, or on your feet at Lane Stadium; the New River Valley has something for everyone.

The Jefferson National Forest is located in Giles, Pulaski and Montgomery counties and provides multiple recreational trails. Giles County features numerous hiking and mountain biking trails including the Cascades just outside of Pembroke, and the AT near Pearisburg and Narrows. Pulaski features the Gatewood Reservoir and an assortment of recreational facilities for canoeing, hiking and biking. Montgomery features Pandapas Pond that offers recreational facilities for a variety of hikers, mountain bikers, and horseback riders.

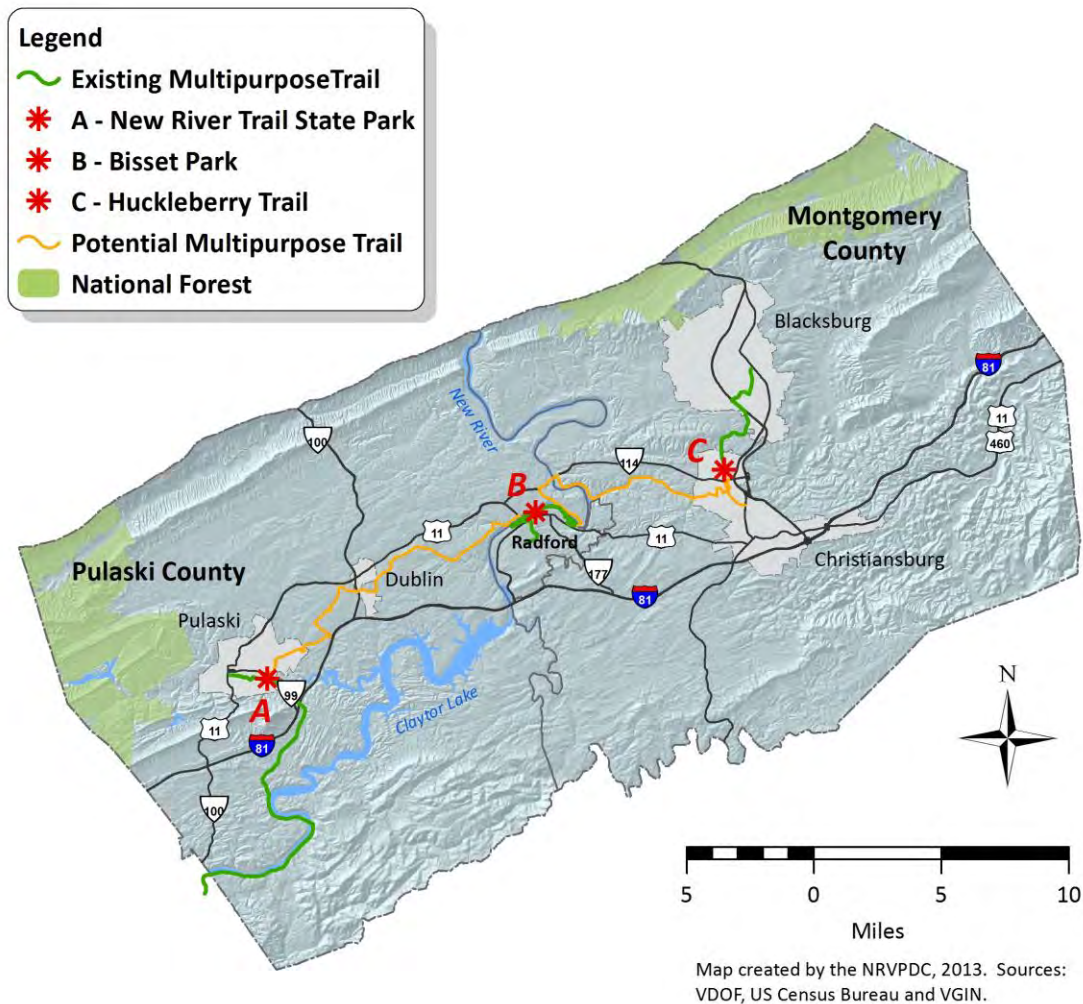
The 497 acre Claytor Lake State Park is located just off Interstate 81 at Exit 101. The Lake is 20 miles long with 100 miles of shoreline. Currently, there are over four miles of easy to moderate rated hiking trails.

The New River Valley has several significant trails throughout the region that provide outdoor recreation and alternative transportation options. The trail system includes:

- The Appalachian Trail: Completed in 1937, the AT is a privately managed unit of the national park system and is the nation's longest footpath at 2,179 miles. In 1968, the AT was the first designated American National Scenic Trail spanning from Georgia to Maine.
- The New River Trail State Park: A Rails-to-Trails project stretching over 50 miles through Grayson to Carroll, Wythe, and Pulaski Counties. The trail enters the region along the New River in Pulaski County from Wythe County. The Dora Trail provides a connection between the New River Trail and the Town of Pulaski.
- The Huckleberry Trail: A Rails-to-Trails project, connects the towns of Blacksburg and Christiansburg. Plans are underway to extend the trail to the south further into the Town of Christiansburg and to the north beyond the Town of Blacksburg to Pandapas Pond Day Use Area of the Jefferson National Forest. Ultimately the Huckleberry Trail (C) will connect to the Radford Riverway (B) and eventually to the New River Trail State Park (A) as shown in Figure 31.
- The City of Radford has an extensive trail network in Bisset Park along the New River and Wildwood Park, one block away. Several other trail miles exist in other localities across the region and the Regional Bikeway-Walkway Plan addresses the expansion and connectivity of these facilities.
- US Bicycle Route 76: One of only two established US Bicycle Routes; this designated bicycle route crosses the United States from Oregon to Yorktown, Virginia and passes through the City of Radford, Montgomery, Pulaski, Wythe, and Roanoke counties.

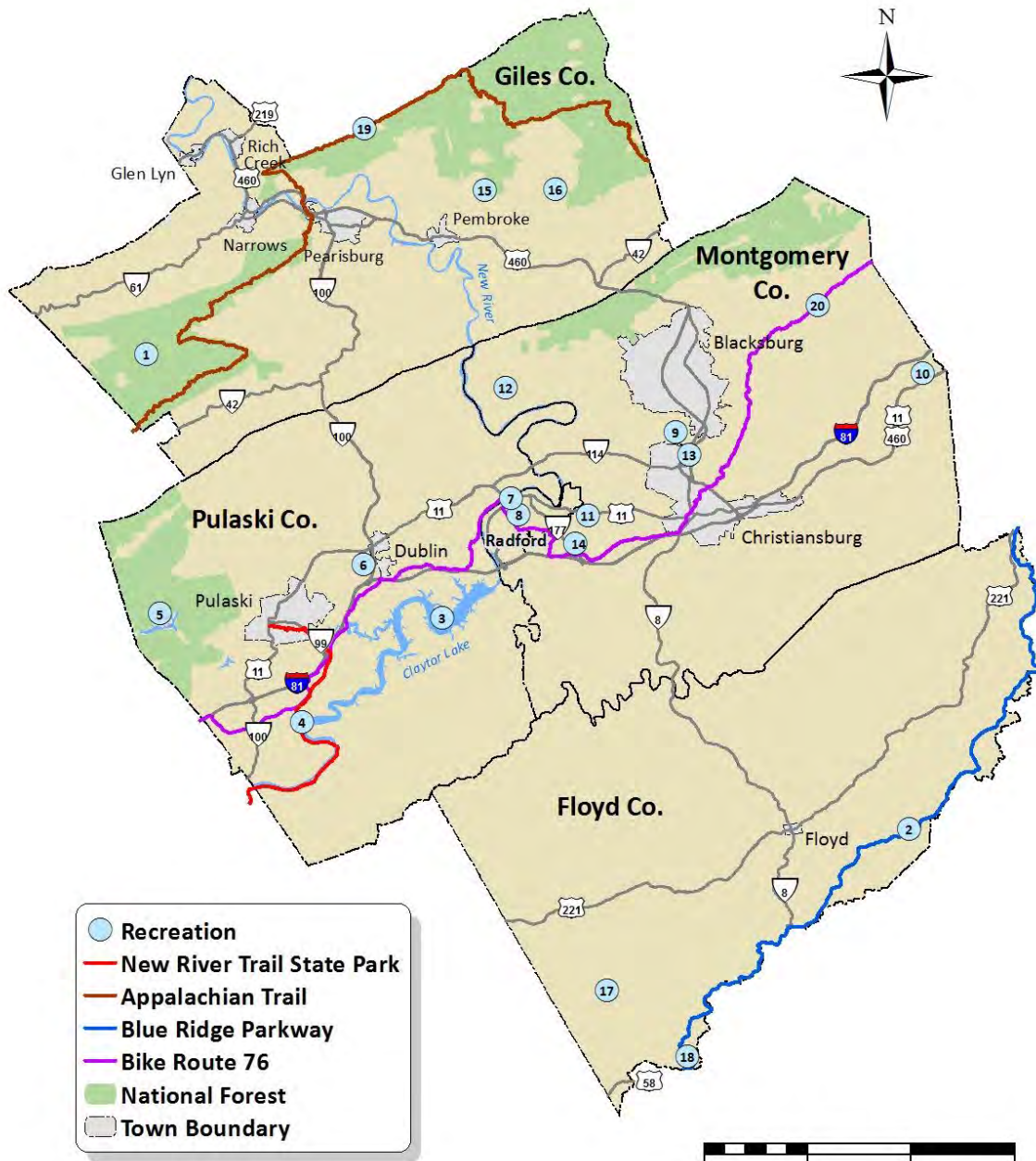


**Figure 31**  
**New River Trail Extension**



Several jurisdictions operate independent recreation departments that administer parks and recreation facilities and programs. Organized sporting activities such as baseball, softball, basketball, and football are offered for participants of all ages. Pulaski is home to a professional minor league baseball team. In addition, numerous public tennis and basketball courts, playgrounds, and ball fields are available throughout the New River Valley. Figure 32 on the following page highlights some of the major parks and recreational attractions in the New River Valley along with available amenities.

**Figure 32**  
**NRV Parks and Attractions**



Map created by the NRVPCD, 2013. Sources:  
VA DCR - Division of Natural Heritage, US Census Bureau and VGIN.

Map Key	Location	Activities																				
		Camping	Playground	Hiking/Walking	Biking	Horseback Riding	Birding	Swimming	Water Park	Canoing	Motor Boating	Frisbee Golf	Horseshoes	Model Airplane Area	Picnic Areas	Hunting	Fishing	Volleyball	Tennis Court	Basketball Court	Baseball Field	Multipurpose Field
1	Jefferson National Forest	•	•	•	•	•	•	•	•	•	•	•	•	•	•	•	•	•	•	•	•	•
2	Blue Ridge Parkway	•	•	•	•	•	•	•	•	•	•	•	•	•	•	•	•	•	•	•	•	•
3	Claytor Lake State Park	•	•	•	•	•	•	•	•	•	•	•	•	•	•	•	•	•	•	•	•	•
4	New River Trail State Park	•	•	•	•	•	•	•	•	•	•	•	•	•	•	•	•	•	•	•	•	•
5	Gatewood Reservoir	•	•	•	•	•	•	•	•	•	•	•	•	•	•	•	•	•	•	•	•	•
6	Randolph Park	•	•	•	•	•	•	•	•	•	•	•	•	•	•	•	•	•	•	•	•	•
7	Bisset Park	•	•	•	•	•	•	•	•	•	•	•	•	•	•	•	•	•	•	•	•	•
8	Wildwood Park	•	•	•	•	•	•	•	•	•	•	•	•	•	•	•	•	•	•	•	•	•
9	Coal Mining Heritage Park	•	•	•	•	•	•	•	•	•	•	•	•	•	•	•	•	•	•	•	•	•
10	Eastern Montgomery Park	•	•	•	•	•	•	•	•	•	•	•	•	•	•	•	•	•	•	•	•	•
11	Plum Creek Park	•	•	•	•	•	•	•	•	•	•	•	•	•	•	•	•	•	•	•	•	•
12	McCoy Park	•	•	•	•	•	•	•	•	•	•	•	•	•	•	•	•	•	•	•	•	•
13	Mid-County Park	•	•	•	•	•	•	•	•	•	•	•	•	•	•	•	•	•	•	•	•	•
14	Motor Mile Park	•	•	•	•	•	•	•	•	•	•	•	•	•	•	•	•	•	•	•	•	•
15	Cascade Falls Recreation Area	•	•	•	•	•	•	•	•	•	•	•	•	•	•	•	•	•	•	•	•	•
16	Mountain Lake Conservancy	•	•	•	•	•	•	•	•	•	•	•	•	•	•	•	•	•	•	•	•	•
17	Buffalo Mountain	•	•	•	•	•	•	•	•	•	•	•	•	•	•	•	•	•	•	•	•	•
18	Mabry Mill	•	•	•	•	•	•	•	•	•	•	•	•	•	•	•	•	•	•	•	•	•
19	Appalachian Trail	•	•	•	•	•	•	•	•	•	•	•	•	•	•	•	•	•	•	•	•	•
20	US Bicycle Route 76	•	•	•	•	•	•	•	•	•	•	•	•	•	•	•	•	•	•	•	•	•

## ***Arts and Culture Opportunities***

Numerous historical societies promote an appreciation of the region's heritage. Below is a sampling of historic and cultural points of interest around the region. A more complete list can be found in the appendices.

### **Floyd County**

#### **Floyd Country Store**

Offering a unique selection of merchandise and dining options, this historic country store hosts the acclaimed Friday Night Jamboree and other live music performances.

Contact: 540-745-4563; [info@floydcountrystore.com](mailto:info@floydcountrystore.com);  
[www.floydcountrystore.com](http://www.floydcountrystore.com)

Location: 206 South Locust Street, Floyd, VA 24091



#### **The Jacksonville Center for the Arts**

Located in a renovated dairy barn, the Center offers artist studios, gallery exhibits, art classes, arts outreach, and special events.

Contact: 540-745-2784; [www.jacksonvillecenter.org](http://www.jacksonvillecenter.org)

Location: 220 Parkway Lane South (1/2 mile past stoplight, Rt. 8 south), Floyd, VA 24091

### **Giles County**

#### **Andrew Johnston House**

This property, listed on the National Register of Historic Places, includes the home built in 1829, the doctor's office built in 1857, and an ADA accessible museum and exhibit space. The Andrew Johnston property was used for a brief time in 1862 as a Union Army headquarters by Col. Rutherford B. Hayes and Sgt. William McKinley, both of whom later served as U.S. presidents. The Johnston House is home to the Giles County Historical Society which maintains the property as a museum.

Contact: 540-921-1050; [info@gilescountyhistorical.org](mailto:info@gilescountyhistorical.org); [www.gilescountyhistorical.org](http://www.gilescountyhistorical.org)

Location: 208 North Main Street, Pearisburg, VA 24134

#### **Mountain Lake Conservancy and Lodge**

Historic mountain-top resort has been a vacation destination for nearly 150 years. Perfect for a relaxing getaway. Where the movie "Dirty Dancing" was filmed.

Contact: 540-626-7121; [www.mtnlakelodge.com](http://www.mtnlakelodge.com)

Location: 115 Hotel Circle, Pembroke, VA 24136

### **Montgomery County**

#### **Smithfield**

Historic Smithfield Plantation, the home of Revolutionary War patriot Colonel William Preston and his wife Susanna Smith Preston, was built in 1774 on what was then the western frontier.

Smithfield Plantation interprets three generations of the Prestons and other families that lived and worked at Smithfield.

Contact: 540-231-3947; [www.smithfieldplantation.org](http://www.smithfieldplantation.org)

Location: 1000 Smithfield Road, Blacksburg, VA 24060

### **Montgomery Museum & Lewis Miller Regional Art Center**

The fine art gallery features six exhibits each year and the permanent art collection includes many original works and prints by well-known regional artists. The history of Montgomery County is preserved and presented through changing exhibits, a large collection of historic objects, and a wealth of research materials. Local history and genealogy researchers will find the library to be an excellent resource. The grounds are the site for the annual Heritage Day event each August.

Contact: 540-382-5644; <http://montgomerymuseum.org>

Location: 300 Pepper Street, Christiansburg, VA 24073

### *Pulaski County*

#### **Fine Arts Center for the New River Valley**

The Center offers a program of rotating art exhibits, classes for adults and children, lectures, performances, a permanent collection of the works of New River Valley artists, and the sale of related merchandise.

Contact: 540-980-7363; [www.facnrv.org](http://www.facnrv.org)

Location: 21 West Main Street, Pulaski, VA 24301

#### **Wilderness Road Regional Museum**

Located in the historic village of Newbern, the museum includes exhibits, a library and archive of historical books and records, as well as a large assortment of family records.

Contact: 540-674-4835

Location: 5240 Wilderness Road, Newbern, VA 24126

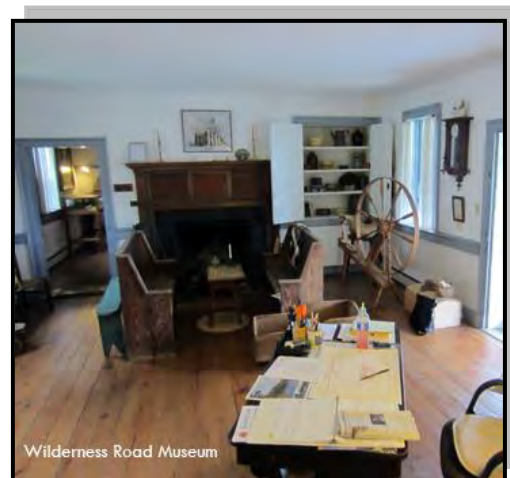
### *City of Radford*

#### **Glencoe Museum**

Glencoe Museum offers insight on the history and culture of Radford and the New River Valley. The location features the museum and art gallery as well as a museum shop.

Contact: 540-731-5031; <http://glencoemuseum.org/>

Location: 600 Unruh Drive, Radford, VA 24143



**Ingles Farm - Site of William and Mary  
Draper Ingles Home**

Ingles Farm is a small living history farm dedicated to depicting life during the 18<sup>th</sup> century in the New River Valley. Open only on designated weekends (see website for schedule).

Contact: 540-267-3153 (Radford Visitors Center); [www.inglesferry.com](http://www.inglesferry.com)

Location: 9 Wilderness Road, Radford, VA 24141



**Law Enforcement**

The New River Valley is served by numerous law enforcement agencies that act in cooperation with one another. Available for law enforcement duties are the sheriff's departments, town/city police departments, and the Virginia State Police. There are over 380 sworn officers employed for the New River Valley and over 65 at Virginia Tech and Radford University. Table 65 lists the crime rates (Incident Rate Per 100,000) for local and State levels.

**Table 64  
Crime Rates in the New River Valley  
Incident Rate Per 100,000**

JURISDICTION	1990	1992	1994	1996	1998	2000	2002	2004	2006	2008	2010
Floyd County	683	787	810	1,000	1,098	1,982	2,069	2,966	2,003	2,173	2,022
Giles County	1,094	1,071	1,448	1,151	1,320	1,855	968	1,893	4,211	4,701	4,151
Montgomery County	3,261	3,293	2,675	2,781	2,859	6,474	4,929	5,561	5,219	4,902	4,822
Pulaski County	3,971	2,788	2,263	2,166	2,752	3,689	2,570	3,547	4,771	5,788	7,350
City of Radford	2,842	3,273	2,599	2,448	2,323	*	*	*	9,805	10,171	7,911

Sources: Virginia Statistical Abstract, 1996-97 Edition: Weldon Cooper Center for Public Service, University of Virginia, Charlottesville, VA, 1996.  
Crime in Virginia, 1998, 2000, 2002, 2004, 2006, 2008, 2010: Department of State Police, Richmond, VA.

\*Data not submitted.

Note: Based on serious crimes known to police (murder and non-negligent manslaughter, forcible rape, robbery, aggravated assault, burglary, larceny and motor vehicle theft).

**Fire and Rescue**

Fire and rescue in the Valley is provided by approximately 34 fire companies and rescue squads. The companies are staffed by 1,183 full-time and volunteer personnel combined.

**Table 65  
Fire and Rescue Personnel**

<b>Jurisdiction</b>	<b>Fire Department Personnel</b>	<b>Rescue Squad Personnel</b>
Floyd County	85	30
Giles County	211	92
Montgomery County	174	235
Pulaski County	231	71
City of Radford	29	25
Source: Local Fire Departments and Rescue Squads, 2013.		

***Libraries***

The Valley has at its disposal an excellent network of libraries and library systems, which includes mobile units in certain areas. The largest library in the area is on the Virginia Tech Campus, and maintains over two million volumes. This library is also open to the general public, as is Radford University's library, which houses over 500,000 volumes. New River Community College's (NRCC) library allows students, faculty, staff, citizens, businesses and industries of the New River Valley access to a collection of 33,000 books and periodicals, 35,000 electronic books, videotapes, DVDs and other media. NRCC possesses a networked on-line electronic catalog of all NRCC library holdings as well as the holdings of the other 22 community college libraries in the state, through the Virginia Community College System's on-line library catalog system. Public libraries throughout the area complement educational systems. In Giles County, the Towns of Narrows, Pearisburg, Pembroke, and Rich Creek maintain libraries in addition to those maintained by the School division. These libraries have a collection of volumes exceeding 70,000 units. The Montgomery-Floyd Regional Library has over 179,000 volumes and Pulaski County's library system houses over 63,000. The City of Radford's public library makes 74,000 volumes available. Valley residents have 2.9 million volumes at their disposal.

***Media***

Print media coverage available in the New River Valley includes the Roanoke Times, the Washington Post, the Wall Street Journal, and the New York Times. Approximately eight local newspapers are published in the area to cover news and events of a more local nature.

There are numerous radio stations serving the New River Valley, either AM, FM, or both. At least ten are now broadcasting locally and two more powerful FM stations can be received from Roanoke. Five television stations provide service to the Valley as well. WDBJ 7 and WSLS 10 in Roanoke are CBS and NBC affiliates, respectively, and WSET 13, an ABC affiliate, operates out of Lynchburg. WVVA broadcasts from Bluefield, West Virginia, and public television is brought to the region by Blue Ridge Public Television (WBRA) in Roanoke. Satellite and cable television is also available in the NRV which includes CNN, HBO, Showtime, and ESPN.

### ***Internet Service***

There are several Internet providers in the region. Services provided include Dialup, DSL, Cable, and T-1. The region has developed a telecommunications plan to ensure that the NRV is well-wired to be competitive in the global economy.

### ***Shopping Facilities***

In addition to downtown and neighborhood shopping facilities within the New River Valley, two regional shopping malls are located at the intersection of Virginia Route 114 and U.S. Route 460. The major stores within the corridor include JC Penney, Belk, WalMart, K-Mart, Lowe's, Office Max, Barnes and Noble, Home Depot, Target, Old Navy, Ross, Staples, and Best Buy.

### ***Hotels and Motels***

There are approximately 50 lodging establishments in the New River Valley with over 1,800 lodging rooms, six of which offer conference space. Some of the hotels and motels accessible from Interstate 81 include the Best Western, Super 8, Travel Inn, and the Hampton Inn.

### ***Religious and Civic Organizations***

A wide variety of religious denominations are represented in the New River Valley, including Baptist, Brethren, Catholic, Christian, Church of Christ, Church of God, B'hai, Jewish, Quaker, Mennonites, Episcopal, Latter Day Saints, Lutheran, Pentecostal Holiness, Presbyterian, Methodist, Unitarian Universalist, and Wesleyan. Several non-denominational churches are established and growing as well.

There are also many agencies dedicated to public service, some of which are the Boy Scouts of America, Boys Club, Girl Scouts of the USA, the YMCA, and the United Way. There are many youth oriented activities. The New River Valley is home to Ruritan International and hosts numerous Lions clubs and other service organizations.