



INSIDE THIS ISSUE:

- Exploring Passenger Rail in the NRV
- Transportation Program
- Project Updates
- NRVPCD Meeting Summary
- Economic Indicator
- The Competitive Edge

UPCOMING MEETINGS:



NRVRC Annual Dinner
Wednesday, May 13th, 6:00 p.m.
Hotel Floyd

Transportation Technical Advisory Committee
Tuesday, May 19th, 1:30 p.m.
NRVBC - Conference Room

Commission Board Meeting
Thursday, May 28th, 6:00 p.m.
NRVBC - New River Room

Commission Board Meeting
Thursday, June 25th, 6:00 p.m.
NRVBC - New River Room

CONNECT WITH US:



[facebook.com/nrvpcd](https://www.facebook.com/nrvpcd)



twitter.com/nrvpcd



[youtube.com/nrvpcd](https://www.youtube.com/nrvpcd)

Exploring Passenger Rail Service in the New River Valley

In 2017, AMTRAK will begin passenger rail service to Roanoke, with daily trains to Lynchburg, Charlottesville, Northern Virginia, and Washington DC. The New River Valley Metropolitan Planning Organization is partnering with the Commission to identify potential passenger rail stops, as well as information about the types of travelers who would use passenger rail service in the region.

The project officially kicked off on February 12, 2015. In March, the Project Management Team utilized AMTRAK's Station Program and Planning Guidelines to begin



discussing potential passenger rail stop locations in the region. The ideal stop location would accommodate a new platform, caretaker station, parking, and transit services. In April, the committee identified nine potential passenger rail stop locations. Over the next several months, each location will be thoroughly evaluated to verify consistency with local planning, potential commercial and/or residential displacement, proximity to activity centers, accessibility to transportation systems and utility infrastructure, site capacity and flexibility, potential ridership and performance, economic impacts, and more.

As part of these efforts, the Commission is gathering information about the travel habits of residents, visitors and university students, and developed a survey to collect information. Originally launched on April 14th, the survey received nearly 3,000 responses in a single week. The survey results will help partners understand potential passenger rail use, and ensure that a new station would offer the services travelers want the most. The survey is available online here: www.surveymonkey.com/s/nrvrailsurvey. If you have 5 minutes to spare, go online and provide your input!

Stay up to date with the latest project information by visiting the project website here: www.nrvpassengerrail.org. The website contains project research, meeting materials, planning resources, opportunities to contribute feedback and more.

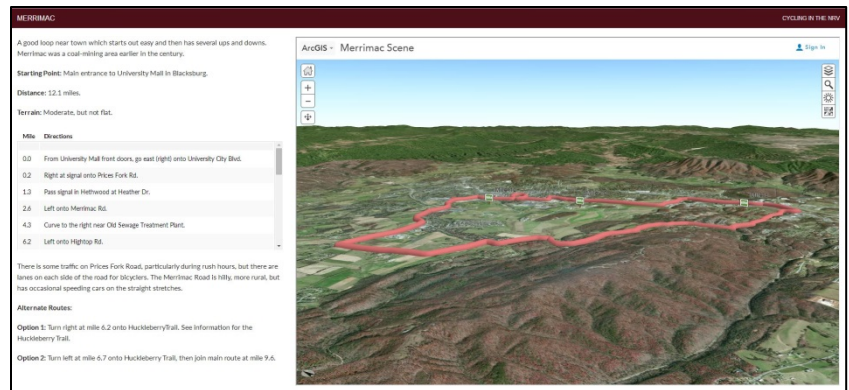
For further information, please contact Elijah Sharp (esharp@nrvpcd.org), 540-639-9313, ext. 210.

Transportation

The Commission began working with local cyclists to update the Cycling in the New River Valley Guidebook in February. The original guidebook was completed nearly 20 years ago and it is still used on a regular basis today. The existing guide provides route descriptions, turn-by-turn instructions, and overhead maps for more than 30 road rides and nearly a dozen off-road rides.

The purpose of the Commission's project is not intended to reinvent the wheel (no pun intended), but rather ground-truth existing routes and build onto this exciting and resourceful tool. The final product will feature a new website and interactive route maps (sample shown). Easily printable materials will also be available for people on the go.

The project will be completed in three phases: 1) review the existing guide, 2) add new routes, and 3) create a new chapter that focuses on traveling between communities. The project is anticipated to be complete in the late-Summer or early-Fall 2015.



For further information, please contact Elijah Sharp (esharp@nrvpdc.org), 540-639-9313, ext. 210.

Floyd County Supports Entrepreneurs with Floyd C⁴ Program and Pitch Night Competition

Communities in Floyd County have a strong 'do-it-yourself' ethic, and a long tradition of entrepreneurs and start-ups who make their own opportunities. From farmers and craftspeople, to restaurants, shops and entertainment venues, Floyd has a sizeable community of experienced entrepreneurs, and a variety of resources to help others to develop their own business. Resources include the Floyd Economic Gardening program, which provides Floyd-based small businesses with market research and counseling from a national network of consultants (more at: <https://floydva.nationalcentereg.org/>), and the newly completed Floyd Innovation Center, which provides a variety of flexible production and office spaces with access to high-speed broadband and other amenities (more at: <http://yesfloydva.org/>).

Continuing with this success, the Floyd County Economic Development Authority (EDA) has won a \$16,000 grant to encourage regional residents to start or grow their business in Floyd, and develop new products or markets to increase their success. The grant from the Virginia Department of Housing and Community Development 'Building Entrepreneurial Economies' program will support the EDA's "Floyd C⁴: Creators, Curriculum, Coaches, Challenge" program. Participants in the Floyd C⁴ program will receive training and guidance in a variety of business development topics, including product development and innovation, marketing, financing, and customer service. In addition, counselors from the Small Business Development Center and other entrepreneur support organizations will provide one-on-one counseling, and successful entrepreneurs will participate as mentors and advisors.

The Floyd C⁴ program culminates in a 'Pitch Night' competition on May 26th, with participants presenting their business ideas to a panel of judges for a chance to win a package of prizes, including \$5,000 to develop their business, and discounted space at the Floyd Innovation Center. All participants will receive access to a network of business development support services and networks of peers.

The Commission is proud to support the C⁴ project. Patrick O'Brien is presenting information on the NRV Development Corporation's revolving loan fund, and serving as a judge at the competition. For further information about Floyd C⁴, please contact Patrick O'Brien (pobrien@nrvpdc.org), 540-639-9313, ext. 206 or Lydeana Martin at the Floyd County Economic Development Authority (lmartin@floydcova.org). Good luck to all the participants as they start their new business ventures!

New River/Mount Rogers Workforce Investment Board



The New River/Mount Rogers Workforce Investment Board (NR/MR WIB) and partners, seek to improve access to employment opportunities, and provide a supportive environment that will enable all citizens to gain the skills and knowledge needed to be viable in today's workplace.

In 2014 the NR/MR WIB partnered with the Commonwealth of Virginia Community College System and the Department of Aging and Rehabilitation to implement the Ticket to Work program in our area, with funds from the Disability Employment Initiative (DEI). The intent of the project is to eliminate employment barriers for Social Security beneficiaries by utilizing two Disability Resource Coordinators (DRCs) in thirteen jurisdiction and communities. The DRCs can provide information and several services to Social Security beneficiaries. The program is completely voluntary, but Social Security beneficiaries must want to work full time in order to receive the full extent of services offered by the program.

Once the Social Security beneficiaries become Ticket to Work customers, they will work with the DRCs to develop an employment plan and follow actions steps. Along with assisting Social Security beneficiaries to return to full-time work, other goals of the DEI Project are to educate and inform businesses about the benefits of hiring individuals with disabilities and increasing the Workforce System's ability to serve individuals with disabilities.

For further information, please contact Kimber Simmons (kimber.simmons@nrmrwib.org), 540-633-6764 or Renee Sturgill (renee.sturgill@nrmrwib.org), 276-228-4051.

Montgomery County Parks & Recreation Plan Update

The Commission is assisting Montgomery County with its Parks and Recreation Plan update. The project includes inventorying and analyzing the different facilities, programs, and operations of the Parks and Recreation Department, identifying goals, and providing recommendations.



To date, Commission staff have met with Montgomery County Parks and Recreation staff and their Advisory Commission. Inventorying existing assets and compiling trends and data needed for the update have begun. Future action will include creating, implementing, and analyzing a community survey. The project will be completed by December 2015.

For further information, please contact Jennifer Wilsie (jwilsie@nrvpdc.org), 540-639-9313, ext. 204 or Michael Gottfredson (michaelg@nrvpdc.org), 540-639-9313, ext. 205.

NRVPDC Meeting Summary

March 26, 2015 Meeting

Economic Development:

- The CEDS committee is continuing their work evaluating goals, objectives and economic development projects for the 2015 update.

Transportation:

- The NRV Passenger Rail project established three committees to support the effort going forward, Legislative/Government Affairs, Marketing/Public Relations, and Feasibility.
- The Regional Transit Coordinating Council kicked-off the MPO Regional Transit Study. Commission staff facilitates the Transit Coordinating Council and was contracted by the MPO to conduct the transit study.
- The Rural Transportation Advisory Committee met and discussed House Bill 2 which is legislation from 2014 General Assembly session to develop a criteria for evaluating proposed transportation projects to ensure funding is directed to the highest need.

Regional:

- This month the New River Valley Economic Development Alliance is celebrating 25 years!
- Virginia's 1st and Commerce Park organizations are continuing their work to consolidate both entities into one which will greatly enhance administrative services and decrease complexity of financial tracking.

PDC:

- The annual dinner event will be at the Hotel Floyd on 5/13 at 6:00.
- The Commission branding process and name change is on track to be formally released at the annual dinner event.

April 23, 2015 Meeting

Economic Development:

- The NRV Trail Guide is in draft form and contains three trails from each of the following, Montgomery County, Pulaski County, Giles County and the City of Radford. Content will be sent to a graphic design firm for layout and printing in the coming month.

Transportation:

- The NRV Passenger Rail project issued a press release to announce the formation of the regional steering committee facilitated by the Blacksburg Partnership as well as to ask residents to take the ridership survey. You can access the survey at www.surveymonkey.com/s/nrvrailsurvey.
- VDOT held a public input meeting on the 2016-2021 Six Year Improvement Program at Northside High School.

Regional:

- The NRV Agritourism planning grant project is in the latter stages of strategic planning development.
- The Virginia Department of Environmental Quality released a draft of the state Water Resources Plan and is available for comment until May 8th.

PDC:

- The annual dinner award recipients, Rich Boucher, Champion of the Valley and Ken Anderson, Citizen of the Valley, will be in attendance at the event.
- The Commission branding process is on track following the Commission selection of a logo at the March meeting.

AGENDAS AND MINUTES ARE AVAILABLE ONLINE AT
WWW.NRVPDC.ORG

Economic Indicator

TAXABLE SALES					
Jurisdiction	2014 1st Qtr	2014 2nd Qtr	2014 3rd Qtr	2014 4th Qtr	2014 Annual
Floyd County	14,353,776	17,500,858	18,396,322	19,446,022	69,715,712
Giles County	33,249,619	31,511,647	40,500,202	32,739,116	147,774,684
Montgomery County	235,131,237	245,450,988	247,278,479	261,205,731	988,622,704
Pulaski County	78,579,631	86,723,191	91,831,524	87,584,907	344,837,508
Radford City	19,231,462	19,957,691	18,615,137	19,711,230	77,490,988

Source: Virginia Department of Taxation.

Taxable Sales

The dollar amount of taxable sales increased throughout most of the NRV jurisdictions in 2014. Montgomery County showed the largest increase in taxable sales and Giles County showed the only decrease.

Summit Place Assisted Living

Summit Place, located in the Town of Rich Creek in Giles County, is the County's first and only affordable assisted living facility. Designed and constructed by Community Housing Partners, the building boasts of highly efficient structurally insulated panels, solar hot water heaters, and hardplank siding.



Summit Place will serve 23 low-to-moderate income persons, providing each resident with his or her own private room, a menu of supportive services, a common dining & living area, and an enclosed garden courtyard. Murals painted by local artists will line the walls, and food for residents will be provided jointly by local-favorite, Anna's restaurant, and in-house staff.

Summit Place was funded through local and state HOME funds, Community Development Block Grant funds, New River Health Care Complex, a private foundation, and Community Housing Partners. Summit Place is scheduled to open in June 2015.

For further information, please contact Jennifer Wilsie (jwilsie@nrvpdc.org), 540-639-9313, ext. 204.

Promoting Clean Commuting in the NRV

Once again, RIDE Solutions is running a Clean Commute Challenge to encourage commuters to try a cleaner commute mode – biking, walking, riding the bus, carpooling, or teleworking – in May. Participants pledge to use a cleaner commute mode, log their trips online, and are entered for weekly prize drawings and a competition to be the Cleanest Commuter of the Year. Team competitions are also encouraged! More information and events are being posted on-line at <http://www.ridesolutions.org/cleancommute/index.shtml>.

May is also Bike Month. RIDE Solution is seeking information for cycling events to include in their calendar. Contact RIDE Solutions at <http://ridesolutions.org/contact/> to add an event to the website.

For further information, please contact Christy Straight (cstraight@nrvpdc.org), 540-639-9313, ext. 209.

THE COMPETITIVE EDGE

Publication of the New River Valley Business Center
A Small Business Incubator

Doug Hudson
Incubator Manager

May - June 2015

New River Valley Business Center welcomes Manicures on the Move

The New River Valley Development Corporation is happy to welcome Manicures On The Move as a new tenant at the New River Valley Business Center. Manicures On The Move provides on-site manicure and pedicure services for home or office, bridal events, company events, church conferences or spa parties in the New River Valley. The mobile service brings all the equipment and expertise needed for manicure and pedicures to clients, wherever they happen to be. The service is great for events, or for those with limited time or mobility.

Manicures On The Move founder, Katrina Watson, is a licensed registered nurse with over 25 years of healthcare experience, and a licensed nail technician. In 2015, she decided to expand the mobile service with a physical location, where she will offer eco-friendly manicure and pedicure options. This soak-free technique uses Bodipure's disposable keratin gloves and socks, saving 2-5 gallons of water per service.

Manicures On The Move is located in Suite 318, in the west wing of the Business Center. For more information, visit their website: www.manionthemove.wix.com/nails.

The New River Valley Business Center still has suites available for businesses looking for a flexible option for production or office space. The NRV Business Center has a variety of spaces available, with lease rates including utilities, and access to meetings spaces and other shared amenities. More information at: <http://www.nrvdc.org/nrvbc.html>.

For further information on the New River Valley Business Center, please contact Doug Hudson (incubatormanager@nrvc.org), 540-633-6730.

For Business Center information contact:

Doug Hudson, Incubator Manager
6580 Valley Center Drive, Suite 302, Radford, VA 24141
Phone: 540.633.6730 Fax: 540.633.6768
incubatormanager@nrvc.org or www.nrvdc.org/nrvbc.html



Print Edition Subscriber:

The New River Valley News & Views is available electronically. Please contact Julie Phillips, jphillips@nrvpdc.org to be added to the distribution list.

NRVPDC Commissioners

<u>Floyd County</u> · Fred Gerald · Evelyn Janney	<u>Town of Floyd</u> · Mike Patton, Past-Chair
<u>Giles County</u> · Richard McCoy · Leon Law	<u>Town of Narrows</u> · Tom Garrett
<u>Montgomery County</u> · Annette Perkins · Michael Harvey	<u>Town of Pearisburg</u> · Susie Journell
<u>Pulaski County</u> · Charles Bopp · Doug Warren	<u>Town of Pulaski</u> · Greg East, Vice Chair · Larry Clevinger
<u>City of Radford</u> · Michael Turk · Helen Harvey	<u>Town of Rich Creek</u> · William Kantsios
<u>Town of Blacksburg</u> · Cecile Newcomb · Holly Lesko · Michael Sutphin	<u>Radford University</u> · Joe Carpenter
<u>Town of Christiansburg</u> · Scott Weaver, Treasurer · Henry Showalter	<u>Virginia Tech</u> · Jason Soileau · Kevin Sullivan, Chair

Elected Officials in Bold

Kevin R. Byrd, AICP
 Executive Director
kbyrd@nrvpdc.org

Julie Phillips, Newsletter Editor

Local Technical Assistance

Town of Narrows Comprehensive Plan Update: Commission staff are drafting sections of the plan document. Next steps will include review and comment by Town Planning Commission and staff.

Town of Pulaski Comprehensive Plan Update: The Town Planning Commission will be working on goals and objectives with assistance from Commission staff. Project staff are drafting portions of the plan narrative.

Pulaski County Development Ordinances: Pulaski County is reviewing its subdivision, zoning, and development-related ordinances to identify opportunities for updating, reorganization, and streamlining of the ordinances. As part of this process, Commission staff are providing facilitation assistance for public meetings held by the County. The second group of meetings was held in March and focused largely on development standards. Two additional meetings will be held in May to focus on some specific land uses within zoning districts.

For further information, please contact Patrick Burton (pburton@nrvpdc.org), 540-639-9313, ext. 217.

New River Valley
 Planning District Commission
 6580 Valley Center Drive, Suite 124
 Radford, VA 24141
 P: 540-639-9313
 F: 540-831-6093
www.nrvpdc.org
nrvpdc@nrvpdc.org



To receive this newsletter by email contact nrvpdc@nrvpdc.org